

**ROMIDEPSIN- romidepsin**  
**Pfizer Laboratories Div Pfizer Inc**

-----  
**HIGHLIGHTS OF PRESCRIBING INFORMATION**

**These highlights do not include all the information needed to use ROMIDEPSIN safely and effectively. See full prescribing information for ROMIDEPSIN.**

**ROMIDEPSIN for injection, for intravenous use**

**Initial U.S. Approval: 2009**

-----  
**RECENT MAJOR CHANGES** -----

- Dosage and Administration (2.3)

7/2016

-----  
**INDICATIONS AND USAGE** -----

Romidepsin is a histone deacetylase (HDAC) inhibitor indicated for:

- Treatment of cutaneous T-cell lymphoma (CTCL) in patients who have received at least one prior systemic therapy (1).
- Treatment of peripheral T-cell lymphoma (PTCL) in patients who have received at least one prior therapy (1).

These indications are based on response rate. Clinical benefit such as improvement in overall survival has not been demonstrated (1).

-----  
**DOSAGE AND ADMINISTRATION** -----

- 14 mg/m<sup>2</sup> administered intravenously (IV) over a 4-hour period on days 1, 8, and 15 of a 28-day cycle. Repeat cycles every 28 days provided that the patient continues to benefit from and tolerates the drug (2.1).
- Discontinue or interrupt treatment (with or without dose reduction to 10 mg/m<sup>2</sup>) to manage drug toxicity (2.2).

-----  
**DOSAGE FORMS AND STRENGTHS** -----

Romidepsin for Injection, 10 mg (3).

-----  
**CONTRAINDICATIONS** -----

None (4).

-----  
**WARNINGS AND PRECAUTIONS** -----

- Myelosuppression: Romidepsin can cause thrombocytopenia, leukopenia (neutropenia and lymphopenia), and anemia; monitor blood counts during treatment with Romidepsin; interrupt and/or modify the dose as necessary (5.1).
- Infections: Fatal and serious infections. Reactivation of DNA viruses (Epstein Barr and hepatitis B). Consider monitoring and prophylaxis in patients with evidence of prior hepatitis B (5.2).
- Electrocardiographic (ECG) changes: Consider cardiovascular monitoring in patients with congenital long QT syndrome, a history of significant cardiovascular disease, and patients taking medicinal products that lead to significant QT prolongation. Ensure that potassium and magnesium are within the normal range before administration of Romidepsin (5.3).
- Tumor lysis syndrome: Patients with advanced stage disease and/or high tumor burden are at greater risk and should be closely monitored and appropriate precautions taken (5.4).
- Embryo-fetal toxicity: Romidepsin may cause fetal harm when administered to a pregnant woman. Advise women of potential hazard to the fetus and to avoid pregnancy while receiving Romidepsin (5.5, 8.1).

-----  
**ADVERSE REACTIONS** -----

The most common adverse reactions were neutropenia, lymphopenia, thrombocytopenia, infections, nausea, fatigue, vomiting, anorexia, anemia, and ECG T-wave changes (6).

**To report SUSPECTED ADVERSE REACTIONS, contact Pfizer Inc. at 1-800-438-1985 or the FDA at 1-800-FDA-1088 or [www.fda.gov/medwatch](http://www.fda.gov/medwatch).**

-----  
**DRUG INTERACTIONS** -----

- Carefully monitor prothrombin time (PT) and International Normalized Ratio (INR) in patients concurrently administered Romidepsin and warfarin or coumarin derivatives (7.1).
- Monitor for toxicities related to increased romidepsin exposure when co-administering romidepsin with strong CYP3A4 inhibitors (7.2).
- Avoid use with rifampin and strong CYP3A4 inducers (7.3).

**See 17 for PATIENT COUNSELING INFORMATION and FDA-approved patient labeling.**

**FULL PRESCRIBING INFORMATION: CONTENTS\***

**1 INDICATIONS AND USAGE**

**2 DOSAGE AND ADMINISTRATION**

2.1 Dosing Information

2.2 Dose Modification

2.3 Instructions for Preparation and Intravenous Administration

**3 DOSAGE FORMS AND STRENGTHS**

**4 CONTRAINDICATIONS**

**5 WARNINGS AND PRECAUTIONS**

5.1 Myelosuppression

5.2 Infections

5.3 Electrocardiographic Changes

5.4 Tumor Lysis Syndrome

5.5 Use in Pregnancy

**6 ADVERSE REACTIONS**

6.1 Clinical Trials Experience

6.2 Postmarketing Experience

**7 DRUG INTERACTIONS**

7.1 Warfarin or Coumarin Derivatives

7.2 Drugs That Inhibit Cytochrome P450 3A4 Enzymes

7.3 Drugs That Induce Cytochrome P450 3A4 Enzymes

7.4 Drugs That Inhibit Drug Transport Systems

**8 USE IN SPECIFIC POPULATIONS**

8.1 Pregnancy

8.3 Nursing Mothers

8.4 Pediatric Use

8.5 Geriatric Use

8.6 Hepatic Impairment

8.7 Renal Impairment

**10 OVERDOSAGE**

**11 DESCRIPTION**

**12 CLINICAL PHARMACOLOGY**

12.1 Mechanism of Action

12.2 Pharmacodynamics

12.3 Pharmacokinetics

**13 NONCLINICAL TOXICOLOGY**

13.1 Carcinogenesis, Mutagenesis, Impairment of Fertility

**14 CLINICAL STUDIES**

14.1 Cutaneous T-Cell Lymphoma

14.2 Peripheral T-Cell Lymphoma

**15 REFERENCES**

**16 HOW SUPPLIED/STORAGE AND HANDLING**

16.1 How Supplied

16.2 Storage

**17 PATIENT COUNSELING INFORMATION**

17.1 Instructions

\* Sections or subsections omitted from the full prescribing information are not listed.

---

## FULL PRESCRIBING INFORMATION

### 1 INDICATIONS AND USAGE

Romidepsin is indicated for:

- Treatment of cutaneous T-cell lymphoma (CTCL) in patients who have received at least one prior systemic therapy.
- Treatment of peripheral T-cell lymphoma (PTCL) in patients who have received at least one prior therapy.

These indications are based on response rate. Clinical benefit such as improvement in overall survival has not been demonstrated.

### 2 DOSAGE AND ADMINISTRATION

#### 2.1 Dosing Information

The recommended dose of romidepsin is 14 mg/m<sup>2</sup> administered intravenously over a 4-hour period on days 1, 8, and 15 of a 28-day cycle. Cycles should be repeated every 28 days provided that the patient continues to benefit from and tolerates the drug.

#### 2.2 Dose Modification

*Nonhematologic toxicities except alopecia*

- Grade 2 or 3 toxicity: Treatment with romidepsin should be delayed until toxicity returns to ≤ Grade 1 or baseline, then therapy may be restarted at 14 mg/m<sup>2</sup>. If Grade 3 toxicity recurs, treatment with romidepsin should be delayed until toxicity returns to ≤ Grade 1 or baseline and the dose should be permanently reduced to 10 mg/m<sup>2</sup>.
- Grade 4 toxicity: Treatment with romidepsin should be delayed until toxicity returns to ≤ Grade 1 or baseline, then the dose should be permanently reduced to 10 mg/m<sup>2</sup>.
- Romidepsin should be discontinued if Grade 3 or 4 toxicities recur after dose reduction.

*Hematologic toxicities*

- Grade 3 or 4 neutropenia or thrombocytopenia: Treatment with romidepsin should be delayed until the specific cytopenia returns to ANC  $\geq 1.5 \times 10^9/L$  and platelet count  $\geq 75 \times 10^9/L$  or baseline, then therapy may be restarted at 14 mg/m<sup>2</sup>.
- Grade 4 febrile ( $\geq 38.5^\circ C$ ) neutropenia or thrombocytopenia that requires platelet transfusion: Treatment with romidepsin should be delayed until the specific cytopenia returns to ≤ Grade 1 or baseline, and then the dose should be permanently reduced to 10 mg/m<sup>2</sup>.

#### 2.3 Instructions for Preparation and Intravenous Administration

Romidepsin is a cytotoxic drug. Use appropriate handling procedures.

Romidepsin must be reconstituted with the supplied diluent and further diluted with 0.9% Sodium Chloride Injection, USP before intravenous infusion.

Romidepsin and diluent vials contain an overfill to ensure the recommended volume can be withdrawn at a concentration of 5 mg/mL.

- Each 10 mg single-dose vial of romidepsin must be reconstituted with 2.2 mL of the supplied diluent.
- With a suitable syringe, aseptically withdraw 2.2 mL from the supplied diluent vial, and slowly

inject it into the romidepsin for injection vial. Swirl the contents of the vial until there are no visible particles in the resulting solution. The reconstituted solution will contain romidepsin 5 mg/mL. The reconstituted romidepsin vial will contain 2 mL of deliverable volume of drug product. The reconstituted romidepsin solution is chemically stable for up to 8 hours at room temperature.

- Extract the appropriate amount of romidepsin from the vials to deliver the desired dose, using proper aseptic technique. Before intravenous infusion, further dilute romidepsin in 500 mL 0.9% Sodium Chloride Injection, USP.
- Infuse over 4 hours.

The diluted solution is compatible with polyvinyl chloride (PVC), ethylene vinyl acetate (EVA), polyethylene (PE) infusion bags as well as glass bottles, and is chemically stable for up to 24 hours when stored at room temperature. However, it should be administered as soon after dilution as possible.

Parenteral drug products should be inspected visually for particulate matter and discoloration before administration, whenever solution and container permit.

### **3 DOSAGE FORMS AND STRENGTHS**

Romidepsin is supplied as a kit which includes a sterile, lyophilized powder in a 10 mg single-dose vial containing 11 mg of romidepsin and 22 mg of the bulking agent, povidone, USP. In addition, each kit includes a single-dose sterile vial containing 2.4 mL (2.2 mL deliverable volume) of the diluent composed of 80% propylene glycol, USP, and 20% dehydrated alcohol, USP.

### **4 CONTRAINDICATIONS**

None.

### **5 WARNINGS AND PRECAUTIONS**

#### **5.1 Myelosuppression**

Treatment with romidepsin can cause thrombocytopenia, leukopenia (neutropenia and lymphopenia), and anemia. Monitor blood counts regularly during treatment with romidepsin, and modify the dose as necessary [see *Dosage and Administration (2.2) and Adverse Reactions (6)*].

#### **5.2 Infections**

Fatal and serious infections, including pneumonia, sepsis, and viral reactivation, including Epstein Barr and hepatitis B viruses, have been reported in clinical trials with romidepsin. These can occur during treatment and within 30 days after treatment. The risk of life threatening infections may be greater in patients with a history of prior treatment with monoclonal antibodies directed against lymphocyte antigens and in patients with disease involvement of the bone marrow [see *Adverse Reactions (6)*].

Reactivation of hepatitis B virus infection has occurred in 1% of PTCL patients in clinical trials in Western populations [see *Adverse Reactions (6)*]. In patients with evidence of prior hepatitis B infection, consider monitoring for reactivation, and consider antiviral prophylaxis.

Reactivation of Epstein Barr viral infection leading to liver failure has occurred in a trial of patients with relapsed or refractory extranodal NK/T-cell lymphoma. In one case, ganciclovir prophylaxis failed to prevent Epstein Barr viral reactivation.

#### **5.3 Electrocardiographic Changes**

Several treatment-emergent morphological changes in ECGs (including T-wave and ST-segment changes) have been reported in clinical studies. The clinical significance of these changes is unknown [see *Adverse Reactions (6)*].

In patients with congenital long QT syndrome, patients with a history of significant cardiovascular disease, and patients taking anti-arrhythmic medicines or medicinal products that lead to significant QT prolongation, consider cardiovascular monitoring of ECGs at baseline and periodically during treatment.

Confirm that potassium and magnesium levels are within normal range before administration of romidepsin [see *Adverse Reactions (6)*].

#### 5.4 Tumor Lysis Syndrome

Tumor lysis syndrome (TLS) has been reported to occur in 1% of patients with tumor stage CTCL and 2% of patients with Stage III/IV PTCL. Patients with advanced stage disease and/or high tumor burden are at greater risk, should be closely monitored, and managed as appropriate.

#### 5.5 Use in Pregnancy

There are no adequate and well-controlled studies of romidepsin in pregnant women. However, based on its mechanism of action and findings in animals, romidepsin may cause fetal harm when administered to a pregnant woman. In an animal reproductive study, romidepsin was embryocidal and resulted in adverse effects on the developing fetus at exposures below those in patients at the recommended dose of 14 mg/m<sup>2</sup>/week. If this drug is used during pregnancy, or if the patient becomes pregnant while taking romidepsin, the patient should be apprised of the potential hazard to the fetus [see *Use in Specific Populations (8.1)*].

### 6 ADVERSE REACTIONS

The following adverse reactions are described in more detail in other sections of the prescribing information.

- Myelosuppression [see *Warnings and Precautions (5.1)*]
- Infections [see *Warnings and Precautions (5.2)*]
- Electrocardiographic Changes [see *Warnings and Precautions (5.3)*]
- Tumor Lysis Syndrome [see *Warnings and Precautions (5.4)*]

#### 6.1 Clinical Trials Experience

Because clinical trials are conducted under widely varying conditions, adverse reaction rates observed in the clinical trials of a drug cannot be directly compared to rates in the clinical trials of another drug and may not reflect the rates observed in practice.

##### Cutaneous T-Cell Lymphoma

The safety of romidepsin was evaluated in 185 patients with CTCL in 2 single arm clinical studies in which patients received a starting dose of 14 mg/m<sup>2</sup>. The mean duration of treatment in these studies was 5.6 months (range: <1 to 83.4 months).

##### Common Adverse Reactions

Table 1 summarizes the most frequent adverse reactions (> 20%) regardless of causality using the National Cancer Institute-Common Terminology Criteria for Adverse Events (NCI-CTCAE, Version 3.0). Due to methodological differences between the studies, the AE data are presented separately for Study 1 and Study 2. Adverse reactions are ranked by their incidence in Study 1. Laboratory abnormalities commonly reported (> 20%) as adverse reactions are included in Table 1.

**Table 1. Adverse Reactions  
Occurring in >20% of Patients in Either CTCL Study (N=185)**

	Study 1	Study 2
--	---------	---------

Adverse Reactions n (%)	(n=102)		(n=83)	
	All grades	Grade 3 or 4	All grades	Grade 3 or 4
<i>Any adverse reactions</i>	99 (97)	36 (35)	83 (100)	68 (82)
Nausea	57 (56)	3 (3)	71 (86)	5 (6)
Asthenia/Fatigue	54 (53)	8 (8)	64 (77)	12 (14)
Infections	47 (46)	11 (11)	45 (54)	27 (33)
Vomiting	35 (34)	1 (<1)	43 (52)	8 (10)
Anorexia	23 (23)	1 (<1)	45 (54)	3 (4)
Hypomagnesemia	22 (22)	1 (<1)	23 (28)	0
Diarrhea	20 (20)	1 (<1)	22 (27)	1 (1)
Pyrexia	20 (20)	4 (4)	19 (23)	1 (1)
Anemia	19 (19)	3 (3)	60 (72)	13 (16)
Thrombocytopenia	17 (17)	0	54 (65)	12 (14)
Dysgeusia	15 (15)	0	33 (40)	0
Constipation	12 (12)	2 (2)	32 (39)	1 (1)
Neutropenia	11 (11)	4 (4)	47 (57)	22 (27)
Hypotension	7 (7)	3 (3)	19 (23)	3 (4)
Pruritus	7 (7)	0	26 (31)	5 (6)
Hypokalemia	6 (6)	0	17 (20)	2 (2)
Dermatitis/Exfoliative dermatitis	4 (4)	1 (<1)	22 (27)	7 (8)
Hypocalcemia	4 (4)	0	43 (52)	5 (6)
Leukopenia	4 (4)	0	38 (46)	18 (22)
Lymphopenia	4 (4)	0	47 (57)	31 (37)
Alanine aminotransferase increased	3 (3)	0	18 (22)	2 (2)
Aspartate aminotransferase increased	3 (3)	0	23 (28)	3 (4)
Hypoalbuminemia	3 (3)	1 (<1)	40 (48)	3 (4)
Electrocardiogram ST-T wave changes	2 (2)	0	52 (63)	0
Hyperglycemia	2 (2)	2 (2)	42 (51)	1 (1)
Hyponatremia	1 (<1)	1 (<1)	17 (20)	2 (2)
Hypermagnesemia	0	0	22 (27)	7 (8)
Hypophosphatemia	0	0	22 (27)	8 (10)
Hyperuricemia	0	0	27 (33)	7 (8)

### *Serious Adverse Reactions*

Infections were the most common type of SAE reported in both studies with 8 patients (8%) in Study 1 and 26 patients (31%) in Study 2 experiencing a serious infection. Serious adverse reactions reported in > 2% of patients in Study 1 were sepsis and pyrexia (3%). In Study 2, serious adverse reactions in > 2% of patients were fatigue (7%), supraventricular arrhythmia, central line infection, neutropenia (6%), hypotension, hyperuricemia, edema (5%), ventricular arrhythmia, thrombocytopenia, nausea, leukopenia, dehydration, pyrexia, aspartate aminotransferase increased, sepsis, catheter related infection, hypophosphatemia and dyspnea (4%).

Most deaths were due to disease progression. In Study 1, there were two deaths due to cardiopulmonary failure and acute renal failure. In Study 2, there were six deaths due to infection (4), myocardial ischemia, and acute respiratory distress syndrome.

### *Discontinuations*

Discontinuation due to an adverse event occurred in 21% of patients in Study 1 and 11% in Study 2. Discontinuations occurring in at least 2% of patients in either study included infection, fatigue, dyspnea,

QT prolongation, and hypomagnesemia.

### Peripheral T-Cell Lymphoma

The safety of romidepsin was evaluated in 178 patients with PTCL in a sponsor-conducted pivotal study (Study 3) and a secondary NCI-sponsored study (Study 4) in which patients received a starting dose of 14 mg/m<sup>2</sup>. The mean duration of treatment and number of cycles were 5.6 months and 6 cycles in Study 3 and 9.6 months and 8 cycles in Study 4.

#### Common Adverse Reactions

Table 2 summarizes the most frequent adverse reactions (≥ 10%) regardless of causality, using the NCI-CTCAE, Version 3.0. The AE data are presented separately for Study 3 and Study 4. Laboratory abnormalities commonly reported (≥ 10%) as adverse reactions are included in Table 2.

**Table 2. Adverse Reactions Occurring in ≥10% of Patients with PTCL in Study 3 and Corresponding Incidence in Study 4 (N=178)**

Adverse Reactions n (%)	Study 3 (N=131)		Study 4 (N=47)	
	All grades	Grade 3 or 4	All grades	Grade 3 or 4
Any adverse reactions	128 (97)	88 (67)	47 (100)	40 (85)
Gastrointestinal disorders				
Nausea	77 (59)	3 (2)	35 (75)	3 (6)
Vomiting	51 (39)	6 (5)	19 (40)	4 (9)
Diarrhea	47 (36)	3 (2)	17 (36)	1 (2)
Constipation	39 (30)	1 (<1)	19 (40)	1 (2)
Abdominal pain	18 (14)	3 (2)	6 (13)	1 (2)
Stomatitis	14 (11)	0	3 (6)	0
General disorders and administration site conditions				
Asthenia/Fatigue	72 (55)	11 (8)	36 (77)	9 (19)
Pyrexia	46 (35)	8 (6)	22 (47)	8 (17)
Chills	14 (11)	1 (<1)	8 (17)	0
Edema peripheral	13 (10)	1 (<1)	3 (6)	0
Blood and lymphatic system disorders				
Thrombocytopenia	53 (41)	32 (24)	34 (72)	17 (36)
Neutropenia	39 (30)	26 (20)	31 (66)	22 (47)
Anemia	33 (25)	14 (11)	29 (62)	13 (28)
Leukopenia	16 (12)	8 (6)	26 (55)	21 (45)
Metabolism and nutrition disorders				
Anorexia	37 (28)	2 (2)	21 (45)	1 (2)
Hypokalemia	14 (11)	3 (2)	8 (17)	1 (2)
Nervous system disorders				
Dysgeusia	27 (21)	0	13 (28)	0
Headache	19 (15)	0	16 (34)	1 (2)
Respiratory, thoracic and mediastinal disorders				
Cough	23 (18)	0	10 (21)	0
Dyspnea	17 (13)	3 (2)	10 (21)	2 (4)
Investigations				
Weight decreased	14 (11)	0	7 (15)	0

Cardiac disorders				
Tachycardia	13 (10)	0	0	0

### *Serious Adverse Reactions*

Infections were the most common type of SAE reported. In Study 3, 26 patients (20%) experienced a serious infection, including 6 patients (5%) with serious treatment-related infections. In Study 4, 11 patients (23%) experienced a serious infection, including 8 patients (17%) with serious treatment-related infections. Serious adverse reactions reported in  $\geq 2\%$  of patients in Study 3 were pyrexia (8%), pneumonia, sepsis, vomiting (5%), cellulitis, deep vein thrombosis, (4%), febrile neutropenia, abdominal pain (3%), chest pain, neutropenia, pulmonary embolism, dyspnea, and dehydration (2%). In Study 4, serious adverse reactions in  $\geq 2$  patients were pyrexia (17%), aspartate aminotransferase increased, hypotension (13%), anemia, thrombocytopenia, alanine aminotransferase increased (11%), infection, dehydration, dyspnea (9%), lymphopenia, neutropenia, hyperbilirubinemia, hypocalcemia, hypoxia (6%), febrile neutropenia, leukopenia, ventricular arrhythmia, vomiting, hypersensitivity, catheter related infection, hyperuricemia, hypoalbuminemia, syncope, pneumonitis, packed red blood cell transfusion, and platelet transfusion (4%).

Reactivation of hepatitis B virus infection has occurred in 1% of patients with PTCL in clinical trials in Western populations enrolled in Study 3 and Study 4 [see *Warnings and Precautions (5.2)*].

Deaths due to all causes within 30 days of the last dose of romidepsin occurred in 7% of patients in Study 3 and 17% of patients in Study 4. In Study 3, there were 5 deaths unrelated to disease progression that were due to infections, including multi-organ failure/sepsis, pneumonia, septic shock, candida sepsis, and sepsis/cardiogenic shock. In Study 4, there were 3 deaths unrelated to disease progression that were due to sepsis, aspartate aminotransferase elevation in the setting of Epstein Barr virus reactivation, and death of unknown cause.

### *Discontinuations*

Discontinuation due to an adverse event occurred in 19% of patients in Study 3 and in 28% of patients in Study 4. In Study 3, thrombocytopenia and pneumonia were the only events leading to treatment discontinuation in at least 2% of patients. In Study 4, events leading to treatment discontinuation in  $\geq 2$  patients were thrombocytopenia (11%), anemia, infection, and alanine aminotransferase increased (4%).

## **6.2 Postmarketing Experience**

No additional safety signals have been observed from postmarketing experience.

## **7 DRUG INTERACTIONS**

### **7.1 Warfarin or Coumarin Derivatives**

Prolongation of PT and elevation of INR were observed in a patient receiving romidepsin concomitantly with warfarin. Although the interaction potential between romidepsin and warfarin has not been formally studied, monitor PT and INR more frequently in patients concurrently receiving romidepsin and warfarin [see *Clinical Pharmacology (12.3)*].

### **7.2 Drugs That Inhibit Cytochrome P450 3A4 Enzymes**

Romidepsin is metabolized by CYP3A4. Strong CYP3A4 inhibitors increase concentrations of romidepsin. In a pharmacokinetic drug interaction trial the strong CYP3A4 inhibitor ketoconazole increased romidepsin ( $AUC_{0-\infty}$ ) by approximately 25% [see *Clinical Pharmacology (12.3)*].

Monitor for toxicity related to increased romidepsin exposure and follow the dose modifications for toxicity [see *Dosage and Administration (2.2)*] when romidepsin is initially co-administered with strong CYP3A4 inhibitors (e.g., ketoconazole, itraconazole, clarithromycin, atazanavir, indinavir, nefazodone,



nelfinavir, ritonavir, saquinavir, telithromycin, voriconazole).

### **7.3 Drugs That Induce Cytochrome P450 3A4 Enzymes**

Avoid co-administration of romidepsin with rifampin.

In a pharmacokinetic drug interaction trial with co-administered rifampin (a strong CYP3A4 inducer), romidepsin exposure was increased by approximately 80% and 60% for  $AUC_{0-\infty}$  and  $C_{max}$ , respectively [see *Clinical Pharmacology (12.3)*]. Typically, co-administration of CYP3A4 inducers decrease concentrations of drugs metabolized by CYP3A4. The increase in exposure seen after co-administration with rifampin is likely due to rifampin's inhibition of an undetermined hepatic uptake process that is predominantly responsible for the disposition of romidepsin.

It is unknown if other potent CYP3A4 inducers (e.g., dexamethasone, carbamazepine, phenytoin, rifabutin, rifapentine, phenobarbital, St. John's Wort) would alter the exposure of romidepsin. Therefore, the use of other potent CYP3A4 inducers should be avoided when possible.

### **7.4 Drugs That Inhibit Drug Transport Systems**

Romidepsin is a substrate of the efflux transporter P-glycoprotein (P-gp, ABCB1). If romidepsin is administered with drugs that inhibit P-gp, increased concentrations of romidepsin are likely, and caution should be exercised.

## **8 USE IN SPECIFIC POPULATIONS**

### **8.1 Pregnancy**

Pregnancy Category D [see *Warnings and Precautions (5.5)*].

There are no adequate and well-controlled studies of romidepsin in pregnant women. However, based on its mechanism of action and findings in animals, romidepsin may cause fetal harm when administered to a pregnant woman. In an animal reproductive study, romidepsin was embryocidal and resulted in adverse effects on the developing fetus at exposures below those in patients at the recommended dose. If this drug is used during pregnancy, or if the patient becomes pregnant while taking romidepsin, the patient should be apprised of the potential hazard to the fetus.

Romidepsin was administered intravenously to rats during the period of organogenesis at doses of 0.1, 0.2, or 0.5 mg/kg/day. Substantial resorption or post-implantation loss was observed at the high-dose of 0.5 mg/kg/day, a maternally toxic dose. Adverse embryo-fetal effects were noted at romidepsin doses of  $\geq 0.1$  mg/kg/day, with systemic exposures ( $AUC$ )  $\geq 0.2\%$  of the human exposure at the recommended dose of 14 mg/m<sup>2</sup>/week. Drug-related fetal effects consisted of folded retina, rotated limbs, and incomplete sternal ossification.

### **8.3 Nursing Mothers**

It is not known whether romidepsin is excreted in human milk. Because many drugs are excreted in human milk and because of the potential for serious adverse reactions in nursing infants from romidepsin, a decision should be made whether to discontinue nursing or discontinue the drug, taking into account the importance of the drug to the mother.

### **8.4 Pediatric Use**

The safety and effectiveness of romidepsin in pediatric patients has not been established.

### **8.5 Geriatric Use**

Of the approximately 300 patients with CTCL or PTCL in trials, about 25% were >65 years old. No overall differences in safety or effectiveness were observed between these subjects and younger subjects; however, greater sensitivity of some older individuals cannot be ruled out.

## 8.6 Hepatic Impairment

No dedicated hepatic impairment study for romidepsin has been conducted. Mild hepatic impairment does not alter pharmacokinetics of romidepsin based on a population pharmacokinetic analysis. Patients with moderate and severe hepatic impairment should be treated with caution [see *Clinical Pharmacology (12.3)*].

## 8.7 Renal Impairment

No dedicated renal impairment study for romidepsin has been conducted. Based upon the population pharmacokinetic analysis, renal impairment is not expected to significantly influence drug exposure. The effect of end-stage renal disease on romidepsin pharmacokinetics has not been studied. Thus, patients with end-stage renal disease should be treated with caution [see *Clinical Pharmacology (12.3)*].

## 10 OVERDOSAGE

No specific information is available on the treatment of overdosage of romidepsin.

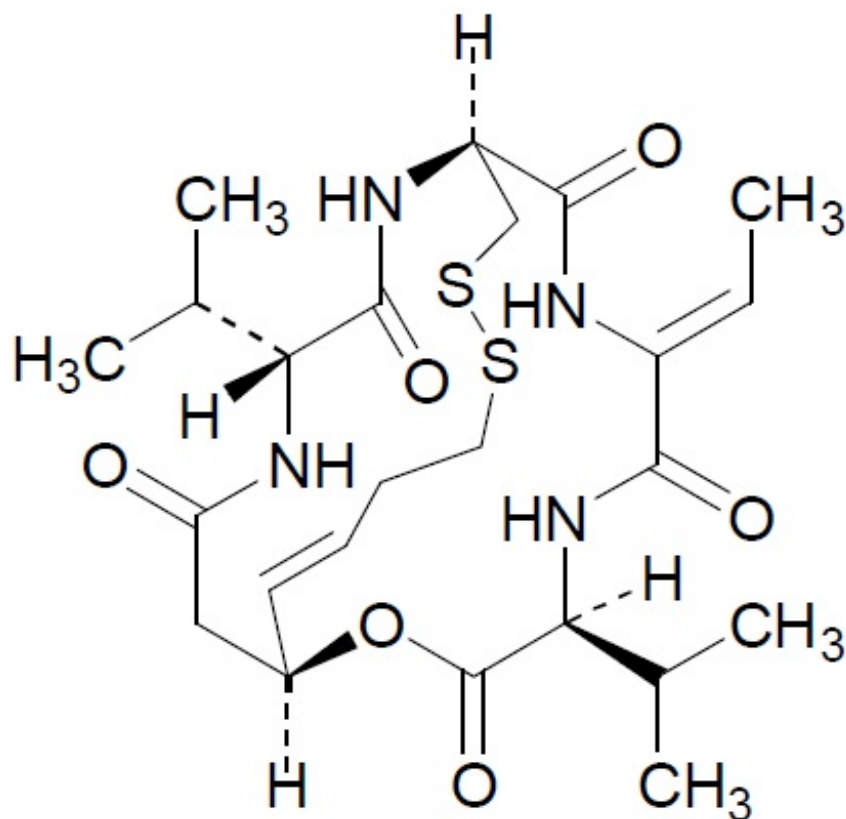
Toxicities in a single-dose study in rats or dogs, at intravenous romidepsin doses up to 2.2 fold the recommended human dose based on the body surface area, included irregular respiration, irregular heartbeat, staggering gait, tremor, and tonic convulsions.

In the event of an overdose, it is reasonable to employ the usual supportive measures, e.g., clinical monitoring and supportive therapy, if required. There is no known antidote for romidepsin and it is not known if romidepsin is dialyzable.

## 11 DESCRIPTION

Romidepsin, a histone deacetylase (HDAC) inhibitor, is a bicyclic depsipeptide. At room temperature, romidepsin is a white powder and is described chemically as (1*S*,4*S*,7*Z*,10*S*,16*E*,21*R*)-7-ethylidene-4,21-bis(1-methylethyl)-2-oxa-12,13-dithia-5,8,20,23-tetraazabicyclo[8.7.6]tricos-16-ene-3,6,9,19,22-pentone. The empirical formula is C<sub>24</sub>H<sub>36</sub>N<sub>4</sub>O<sub>6</sub>S<sub>2</sub>.

The molecular weight is 540.71 and the structural formula is:



Romidepsin for injection is intended for intravenous infusion only after reconstitution with the supplied diluent and after further dilution with 0.9% Sodium Chloride, USP.

Romidepsin is supplied as a kit containing 2 vials.

Romidepsin for injection is a sterile lyophilized white powder and is supplied in a 10 mg single-dose vial containing 11 mg romidepsin and 22 mg povidone, USP.

Diluent for romidepsin is a sterile clear solution and is supplied in a single-dose vial containing 2.4 mL (2.2 mL deliverable volume). Diluent for romidepsin contains 80% (v/v) propylene glycol, USP and 20% (v/v) dehydrated alcohol, USP.

## 12 CLINICAL PHARMACOLOGY

### 12.1 Mechanism of Action

Romidepsin is a histone deacetylase (HDAC) inhibitor. HDACs catalyze the removal of acetyl groups from acetylated lysine residues in histones, resulting in the modulation of gene expression. HDACs also deacetylate non-histone proteins, such as transcription factors. In vitro, romidepsin causes the accumulation of acetylated histones, and induces cell cycle arrest and apoptosis of some cancer cell lines with IC<sub>50</sub> values in the nanomolar range. The mechanism of the antineoplastic effect of romidepsin observed in nonclinical and clinical studies has not been fully characterized.

### 12.2 Pharmacodynamics

#### *Cardiac Electrophysiology*

The effect of romidepsin on the heart-rate corrected QTc/QTcF was evaluated in 26 subjects with advanced malignancies given romidepsin at doses of 14 mg/m<sup>2</sup> as a 4-hour intravenous infusion, and at doses of 8, 10 or 12 mg/m<sup>2</sup> as a 1-hour infusion. Patients received premedications with antiemetics. No large changes in the mean QTc interval (> 20 milliseconds) from baseline based on Fridericia correction method were detected in the trial. Small increase in mean QT interval (< 10 milliseconds) and

mean QT interval increase between 10 to 20 milliseconds cannot be excluded because of the limitations in the trial design.

Romidepsin was associated with a delayed concentration-dependent increase in heart rate in patients with advanced cancer with a maximum mean increase in heart rate of 20 beats per minute occurring at the 6 hour time point after start of romidepsin infusion for patients receiving 14 mg/m<sup>2</sup> as a 4-hour infusion.

### 12.3 Pharmacokinetics

#### *Absorption*

Romidepsin exhibited linear pharmacokinetics across doses ranging from 1.0 to 24.9 mg/m<sup>2</sup> when administered intravenously over 4 hours in patients with advanced cancers.

In patients with T-cell lymphomas who received 14 mg/m<sup>2</sup> of romidepsin intravenously over a 4-hour period on days 1, 8, and 15 of a 28-day cycle, geometric mean values of the maximum plasma concentration (C<sub>max</sub>) and the area under the plasma concentration versus time curve (AUC<sub>0-∞</sub>) were 377 ng/mL and 1549 ng\*hr/mL, respectively.

#### *Distribution*

Romidepsin is highly protein bound in plasma (92% to 94%) over the concentration range of 50 ng/mL to 1000 ng/mL with α1-acid-glycoprotein (AAG) being the principal binding protein. Romidepsin is a substrate of the efflux transporter P-glycoprotein (P-gp, ABCB1).

In vitro, romidepsin accumulates into human hepatocytes via an unknown active uptake process. Romidepsin is not a substrate of the following uptake transporters: BCRP, BSEP, MRP2, OAT1, OAT3, OATP1B1, OATP1B3, or OCT2. In addition, romidepsin is not an inhibitor of BCRP, MRP2, MDR1 or OAT3. Although romidepsin did not inhibit OAT1, OCT2, and OATP1B3 at concentrations seen clinically (1 μmol/L), modest inhibition was observed at 10 μmol/L. Romidepsin was found to be an inhibitor of BSEP and OATP1B1.

#### *Metabolism*

Romidepsin undergoes extensive metabolism in vitro primarily by CYP3A4 with minor contribution from CYP3A5, CYP1A1, CYP2B6, and CYP2C19. At therapeutic concentrations, romidepsin did not competitively inhibit CYP1A2, CYP2C9, CYP2C19, CYP2D6, CYP2E1, or CYP3A4 in vitro.

At therapeutic concentrations, romidepsin did not cause notable induction of CYP1A2, CYP2B6 and CYP3A4 in vitro. Therefore, pharmacokinetic drug-drug interactions are unlikely to occur due to CYP450 induction or inhibition by romidepsin when co-administered with CYP450 substrates.

#### *Excretion*

Following 4-hour intravenous administration of romidepsin at 14 mg/m<sup>2</sup> on days 1, 8, and 15 of a 28-day cycle in patients with T-cell lymphomas, the terminal half-life (t<sub>1/2</sub>) was approximately 3 hours. No accumulation of plasma concentration of romidepsin was observed after repeated dosing.

#### *Drug Interactions*

**Ketoconazole:** A drug interaction clinical trial with the strong CYP3A4 inhibitor, ketoconazole, was conducted in patients with advanced cancer. Following co-administration of 8 mg/m<sup>2</sup> romidepsin (4-hour infusion) with ketoconazole, the overall romidepsin exposure was increased by approximately 25% and 10% for AUC<sub>0-∞</sub> and C<sub>max</sub>, respectively, compared to romidepsin alone, and the difference in AUC<sub>0-∞</sub> between the 2 treatments was statistically significant. Co-administration of ketoconazole slightly decreased the romidepsin clearance and volume of distribution, but did not have a statistically significant effect on peak exposure (C<sub>max</sub>) [see *Drug Interactions (7.2)*].

**Rifampin:** A drug interaction clinical trial with the strong CYP3A4 inducer, rifampin, was conducted in

patients with advanced cancer. Following co-administration of 14 mg/m<sup>2</sup> romidepsin (4-hour infusion) with rifampin, the overall romidepsin exposure was unexpectedly increased by approximately 80% and 60% for AUC<sub>0-∞</sub> and C<sub>max</sub>, respectively, compared to romidepsin alone, and the difference between the 2 treatments was statistically significant. Co-administration of rifampin decreased the romidepsin clearance and volume of distribution by 44% and 52%, respectively. The increase in exposure seen after co-administration with rifampin is likely due to rifampin's inhibition of an undetermined hepatic uptake process that is predominant for the disposition of romidepsin [see *Drug Interactions (7.3)*].

### ***Use in Specific Populations***

#### *Effect of Age, Gender or Race*

The population pharmacokinetic analysis of romidepsin showed that age, gender, or race (white vs. black) did not appear to influence the pharmacokinetics of romidepsin.

#### *Effect of Hepatic Impairment*

No dedicated hepatic impairment study has been conducted for romidepsin. The population pharmacokinetic analysis indicates that mild hepatic impairment [total bilirubin (TB) ≤upper limit of normal (ULN) and aspartate aminotransferase (AST) >ULN; or TB >1.0x - 1.5x ULN and any AST] had no significant influence on romidepsin pharmacokinetics. As the effect of moderate (TB >1.5x - 3x ULN and any AST) and severe (TB >3x ULN and any AST) hepatic impairment on the pharmacokinetics of romidepsin is unknown, patients with moderate and severe hepatic impairment should be treated with caution [see *Use in Specific Populations (8.6)*].

#### *Effect of Renal Impairment*

No dedicated renal impairment study has been conducted for romidepsin. The population pharmacokinetic analysis showed that romidepsin pharmacokinetics were not affected by mild (estimated creatinine clearance 50 - 80 mL/min), moderate (estimated creatinine clearance 30 - 50 mL/min), or severe (estimated creatinine clearance <30 mL/min) renal impairment. Nonetheless, the effect of end-stage renal disease on romidepsin pharmacokinetics has not been studied. Thus, patients with end-stage renal disease should be treated with caution [see *Use in Specific Populations (8.7)*].

## **13 NONCLINICAL TOXICOLOGY**

### **13.1 Carcinogenesis, Mutagenesis, Impairment of Fertility**

Carcinogenicity studies have not been performed with romidepsin. Romidepsin was not mutagenic in vitro in the bacterial reverse mutation assay (Ames test) or the mouse lymphoma assay. Romidepsin was not clastogenic in an in vivo rat bone marrow micronucleus assay when tested to the maximum tolerated dose (MTD) of 1 mg/kg in males and 3 mg/kg in females (6 and 18 mg/m<sup>2</sup> in males and females, respectively). These doses were up to 1.3-fold the recommended human dose, based on body surface area.

Based on nonclinical findings, male and female fertility may be compromised by treatment with romidepsin. In a 26-week toxicology study, romidepsin administration resulted in testicular degeneration in rats at 0.33 mg/kg/dose (2 mg/m<sup>2</sup>/dose) following the clinical dosing schedule. This dose resulted in AUC<sub>0-∞</sub> values that were approximately 2% the exposure level in patients receiving the recommended dose of 14 mg/m<sup>2</sup>/dose. A similar effect was seen in mice after 4 weeks of drug administration at higher doses. Seminal vesicle and prostate organ weights were decreased in a separate study in rats after 4 weeks of daily drug administration at 0.1 mg/kg/day (0.6 mg/m<sup>2</sup>/day), approximately 30% the estimated human daily dose based on body surface area. Romidepsin showed high affinity for binding to estrogen receptors in pharmacology studies. In a 26-week toxicology study in rats, atrophy was seen in the ovary, uterus, vagina and mammary gland of females administered doses as low as 0.1 mg/kg/dose (0.6 mg/m<sup>2</sup>/dose) following the clinical dosing schedule. This dose resulted in AUC<sub>0-∞</sub>

values that were 0.3% of those in patients receiving the recommended dose of 14 mg/m<sup>2</sup>/dose. Maturation arrest of ovarian follicles and decreased weight of ovaries were observed in a separate study in rats after 4 weeks of daily drug administration at 0.1 mg/kg/day (0.6 mg/m<sup>2</sup>/day). This dose is approximately 30% the estimated human daily dose based on body surface area.

## 14 CLINICAL STUDIES

### 14.1 Cutaneous T-Cell Lymphoma

Romidepsin was evaluated in 2 multicenter, single-arm clinical studies in patients with CTCL. Overall, 167 patients with CTCL were treated in the US, Europe, and Australia. Study 1 included 96 patients with confirmed CTCL after failure of at least 1 prior systemic therapy. Study 2 included 71 patients with a primary diagnosis of CTCL who received at least 2 prior skin directed therapies or one or more systemic therapies. Patients were treated with romidepsin at a starting dose of 14 mg/m<sup>2</sup> infused over 4 hours on days 1, 8, and 15 every 28 days.

In both studies, patients could be treated until disease progression at the discretion of the investigator and local regulators. Objective disease response was evaluated according to a composite endpoint that included assessments of skin involvement, lymph node and visceral involvement, and abnormal circulating T-cells ("Sézary cells").

The primary efficacy endpoint for both studies was overall objective disease response rate (ORR) based on the investigator assessments, and defined as the proportion of patients with confirmed complete response (CR) or partial response (PR). CR was defined as no evidence of disease and PR as  $\geq 50\%$  improvement in disease. Secondary endpoints in both studies included duration of response and time to response.

#### Baseline Patient Characteristics

Demographic and disease characteristics of the patients in Study 1 and Study 2 are provided in Table 3.

**Table 3. Baseline Patient Characteristics  
(CTCL Population)**

Characteristic	Study 1 (N=96)	Study 2 (N=71)
Age		
N	96	71
Mean (SD)	57 (12)	56 (13)
Median (Range)	57 (21, 89)	57 (28, 84)
Sex, n (%)		
Men	59 (61)	48 (68)
Women	37 (39)	23 (32)
Race, n (%)		
White	90 (94)	55 (77)
Black	5 (5)	15 (21)
Other/Not Reported	1 (1)	1 (1)
Stage of Disease at Study Entry, n (%)		
IA	0 (0)	1 (1)
IB	15 (16)	6 (9)
IIA	13 (14)	2 (3)
IIB	21 (22)	14 (20)
III	23 (24)	9 (13)
IVA	24 (25)	27 (38)

IVB	0 (0)	12 (17)
Number of Prior Skin-Directed Therapies		
Median (Range)	2 (0,6)	1 (0,3)
Number of Prior Systemic Therapies		
Median (Range)	2 (1, 8)	2 (0, 7)

## Clinical Results

Efficacy outcomes for CTCL patients are provided in Table 4. Median time to first response was 2 months (range 1 to 6) in both studies. Median time to CR was 4 months in Study 1 and 6 months in Study 2 (range 2 to 9).

**Table 4. Clinical Results for CTCL Patients**

<b>Response Rate</b>	<b>Study 1 (N=96)</b>	<b>Study 2 (N=71)</b>
<b>ORR (CR + PR), n (%)</b>	33 (34)	25 (35)
[95% Confidence Interval]	[25, 45]	[25, 49]
CR, n (%)	6 (6)	4 (6)
[95% Confidence Interval]	[2, 13]	[2, 14]
PR, n (%)	27 (28)	21 (30)
[95% Confidence Interval]	[19, 38]	[20, 43]
<b>Duration of Response (months)</b>		
N	33	25
Median (range)	15 (1, 20*)	11 (1, 66*)

\*denotes censored value

## 14.2 Peripheral T-Cell Lymphoma

Romidepsin was evaluated in a multicenter, single-arm, international clinical study in patients with PTCL who had failed at least 1 prior systemic therapy (Study 3). Patients in US, Europe, and Australia were treated with romidepsin at a dose of 14 mg/m<sup>2</sup> infused over 4 hours on days 1, 8, and 15 every 28 days. Of the 131 patients treated, 130 patients had histological confirmation by independent central review and were evaluable for efficacy (HC Population). Six cycles of treatment were planned; patients who developed progressive disease (PD), significant toxicity, or who met another criterion for study termination were to discontinue treatment. Responding patients had the option of continuing treatment beyond 6 cycles at the discretion of the patient and Investigator until study withdrawal criteria were met.

Primary assessment of efficacy was based on rate of complete response (CR + CRu) as determined by an Independent Review Committee (IRC) using the International Workshop Response Criteria (IWC). Secondary measures of efficacy included IRC assessment of duration of response and objective disease response (ORR, CR + CRu + PR).

### Baseline Patient Characteristics

Demographic and disease characteristics of the PTCL patients are provided in Table 5.

**Table 5. Baseline Patient Characteristics  
(PTCL Population)**

<b>Characteristic</b>	<b>Study 3 (N=130)</b>	<b>Study 4 (N=47)</b>
Age (years), n	130	47
Mean (SD)	59 (13)	59 (13)
Median	61	59

Sex, n (%)		
Male	88 (68)	25 (53)
Female	42 (32)	22 (47)
Race, n (%)		
White	116 (89)	40 (85)
Black	7 (5)	4 (9)
Asian	3 (2)	3 (6)
Other	4 (3)	0
PTCL Subtype Based on Central Diagnosis, n (%)		
PTCL Unspecified (NOS)	69 (53)	28 (60)
Angioimmunoblastic T-cell lymphoma (AITL)	27 (21)	7 (15)
ALK-1 negative anaplastic large cell lymphoma (ALCL)	21 (16)	5 (11)
Other	13 (10)	7 (16)
Stage of Disease, n (%)*		
I/II	39 (30)	2 (4)
III/IV	91 (70)	45 (96)
ECOG Performance Status, n (%)		
0	46 (35)	20 (43)
1	67 (51)	22 (47)
2	17 (13)	4 (9)
Number of Prior Systemic Therapies		
Median (Range)	2 (1, 8)	3 (1, 6)

\*Stage of disease was reported at time of diagnosis for Study 3 and at time of study entry for Study 4.

All patients in both studies had received prior systemic therapy for PTCL. In Study 4, a greater percentage of patients had extensive prior radiation and chemotherapy. Twenty-one patients (16%) in Study 3 and 18 patients (38%) in Study 4 had received prior autologous stem cell transplant and 31 (24%) and 19 (40%) patients, respectively, had received prior radiation therapy.

### Clinical Results

Efficacy outcomes for PTCL patients as determined by the IRC are provided in Table 6 for Study 3. The complete response rate was 15% and overall response rate was 26%. Similar complete response rates were observed by the IRC across the 3 major PTCL subtypes (NOS, AITL, and ALK-1 negative ALCL). Median time to objective response was 1.8 months (~2 cycles) for the 34 patients who achieved CR, CRu, or PR and median time to CR was 3.5 months (~4 cycles) for the 20 patients with complete response. The responses in 12 of the 20 patients achieving CR and CRu were known to exceed 11.6 months; the follow-up on the remaining 8 patients was discontinued prior to 8.5 months.

**Table 6. Clinical Results for PTCL Patients**

Response Rate	Study 3 (N=130)
CR+CRu, n (%) <sup>1</sup>	20 (15.4) [9.7, 22.8] <sup>3</sup>
PR, n (%) <sup>2</sup>	14 (10.8) [6.0, 17.4] <sup>3</sup>
ORR (CR+CRu+PR), n (%) <sup>2</sup>	34 (26.2) [18.8, 34.6] <sup>3</sup>

<sup>1</sup> Primary Endpoint.

<sup>2</sup> Secondary Endpoint.

<sup>3</sup> Two-sided 95% Confidence



Interval.

In a second single-arm clinical study in patients with PTCL who had failed prior therapy (Study 4), patients were treated with romidepsin at a starting dose of 14 mg/m<sup>2</sup> infused over 4 hours on days 1, 8, and 15 every 28 days. Patients could be treated until disease progression at the discretion of the patient and the Investigator. The percentage of patients achieving CR + CRu in Study 4 was similar to that in Study 3.

## 15 REFERENCES

“OSHA Hazardous Drugs.” OSHA. <http://www.osha.gov/SLTC/hazardousdrugs/index.html>

## 16 HOW SUPPLIED/STORAGE AND HANDLING

### 16.1 How Supplied

Romidepsin is supplied as a kit including a sterile, lyophilized powder in a 10 mg single-dose vial containing 11 mg of romidepsin and 22 mg of the bulking agent, povidone, USP. In addition, each kit includes a single-dose sterile diluent vial containing 2.4 mL (2.2 mL deliverable volume) of 80% propylene glycol, USP, and 20% dehydrated alcohol, USP.

**NDC 0069-0983-01:** Romidepsin Kit containing 1 vial of romidepsin and 1 vial of diluent for romidepsin per carton.

### 16.2 Storage

Romidepsin for Injection is supplied as a kit containing 2 vials in a single carton. The carton must be stored at 20° to 25°C, excursions permitted between 15° to 30°C. (See USP Controlled Room Temperature.)

Procedures for proper handling and disposal of anticancer drugs should be considered. A guideline on this subject has been published [*see References (15)*].

## 17 PATIENT COUNSELING INFORMATION

Advise the patient to read the FDA-approved patient labeling (Patient Information).

### 17.1 Instructions

- **Nausea and Vomiting**  
Advise patients that nausea and vomiting are common following treatment with romidepsin. Prophylactic antiemetics are recommended for all patients. Advise patients to report these symptoms so that appropriate treatment can be instituted [*see Adverse Reactions (6)*].
- **Low Blood Counts**  
Advise patients that treatment with romidepsin can cause low blood counts and that frequent monitoring of hematologic parameters is required. Patients should be instructed to report fever or other signs of infection, significant fatigue, shortness of breath, or bleeding [*see Warnings and Precautions (5.1)*].
- **Infections**  
Advise patients that infections may occur during treatment with romidepsin. Advise patients to report fever, cough, shortness of breath with or without chest pain, burning on urination, flu-like symptoms, muscle aches, or worsening skin problems. Advise patients to report any previous history of hepatitis B before starting romidepsin [*see Warnings and Precautions (5.2)*].
- **Tumor Lysis Syndrome**  
Advise patients of the risk of tumor lysis syndrome (especially those with advanced stage disease and/or high tumor burden) to maintain high fluid intake for at least 72 hours after each dose [*see*

*Warnings and Precautions (5.4)].*

- Use in Pregnancy  
If pregnancy occurs during treatment with romidepsin, female patients should be advised to seek immediate medical advice and counseling [see *Warnings and Precautions (5.5)*].
- Patients should be instructed to read the patient insert carefully.

Distributed by: Pfizer Labs  
Division of Pfizer Inc  
New York, NY 10017

Manufactured by: Ben Venue Laboratories, Inc.  
Bedford, OH 44146  
or  
Baxter Oncology GmbH  
Halle/Westfalen, Germany

ROMPI.007/PPI.007 2/2018

## **Patient Information**

### **Romidepsin for Injection**

(roe" mi dep' sin)

Read the patient information that comes with romidepsin before you receive your first treatment and each time before you are treated. There may be new information. This leaflet does not take the place of talking with your doctor about your medical condition or your treatment.

#### **What is romidepsin?**

Romidepsin is a prescription medicine used to treat people with a type of cancer called cutaneous T-cell lymphoma (CTCL) or peripheral T-cell lymphoma (PTCL) after at least one other type of medicine by mouth or injection has been tried.

**It is not known if romidepsin is safe and effective in children under 18 years of age.**

#### **What should I tell my doctor before I receive romidepsin?**

##### **Before receiving romidepsin, tell your doctor if you:**

- have any heart problems, including an irregular or fast heartbeat, or a condition called QT prolongation.
- have kidney problems
- have liver problems, including a past history of hepatitis B
- have problems with the amount of potassium or magnesium in your blood
- have nausea, vomiting, or diarrhea
- have any other medical conditions
- are pregnant or plan to become pregnant. Romidepsin may harm your unborn baby. Talk to your doctor about the best way to prevent pregnancy while receiving romidepsin. **Tell your doctor right away if you become pregnant while receiving romidepsin.**
- are breastfeeding or plan to breastfeed. It is not known if romidepsin passes into your breast milk. You and your doctor should decide if you will receive romidepsin or breastfeed. Talk to your doctor about the best way to feed your baby while you are being treated with romidepsin.

**Tell your doctor about all of the medicines you take**, including prescription and over-the-counter medicines, vitamins, and herbal supplements and any recent changes in medications.

Some medicines may affect how romidepsin works, or romidepsin may affect how other medicines work. Especially tell your doctor if you take or use:

- warfarin sodium (Coumadin, Jantoven) or any other blood thinner medicine. Ask your doctor if you are not sure if you are taking a blood thinner. Your doctor may want to test your blood more often.
- a medicine to treat abnormal heartbeats
- St. John's Wort (*Hypericum perforatum*)
- Dexamethasone (a steroid)
- Medicine for:
  - tuberculosis (TB)
  - seizures (epilepsy)
  - bacterial infections (antibiotics)
  - fungal infections (antifungals)
  - HIV (AIDS)
  - depression

Ask your doctor if you are not sure if your medicine is one that is listed above. Know the medicines you take. Keep a list of them and show it to your doctor and pharmacist when you get a new medicine.

### **How will I receive romidepsin?**

- Romidepsin will be given to you by your doctor or nurse as an intravenous (IV) injection into your vein usually over 4 hours.
- Romidepsin is usually given on Day 1, Day 8, and Day 15 of a 28-day cycle of treatment.
- Your doctor will decide how long you will receive treatment with romidepsin.
- Your doctor will check your blood cell counts and other blood tests regularly during your treatment with romidepsin to check for side effects of romidepsin. Your doctor may decide to do other tests to check your health as needed.
- Your doctor may stop your treatment, change when you get your treatment, or change the dose of your treatment if you have certain side effects while receiving romidepsin.

### **What are the possible side effects of romidepsin?**

#### **Romidepsin may cause serious side effects, including:**

- **Low blood cell counts:** Your doctor will regularly do blood tests to check your blood counts.
  - **Low platelets:** can cause unusual bleeding, or bruising under the skin. Talk to your doctor right away if this happens.
  - **Low red blood cells:** may make you feel tired and you may get tired easily. You may look pale, and feel short of breath. Tell your doctor if you have these symptoms.
  - **Low white blood cells:** can cause you to get infections, which may be serious.
- **Serious infections.** People receiving romidepsin can develop serious infections that can sometimes lead to death. These infections can happen during treatment and within 30 days after treatment with romidepsin. Your risk of infection may be higher if you have had chemotherapy in the past. Tell your doctor right away if you have any of these symptoms of infection:
 

◦ fever	◦ burning with urination
◦ cough	◦ flu-like symptoms
◦ shortness of breath with or without chest pain	◦ muscle aches
	◦ worsening skin problems
- **Changes in your heartbeat.** Your doctor may check your heart by doing an ECG (electrocardiogram) and blood tests to check your potassium and magnesium levels, before you start romidepsin treatment. Tell your doctor if you feel an abnormal heartbeat, feel dizzy or faint, have chest pain or shortness of breath.
- **Tumor Lysis Syndrome (TLS).** TLS is a problem of the rapid breakdown of cancer cells that can happen during your treatment with romidepsin. You should drink plenty of fluids in the 3 days after

you receive treatment with romidepsin. Your doctor may do blood tests to check for TLS and may give you medicine to prevent or treat TLS.

Common side effects of romidepsin include:

- nausea, vomiting, diarrhea, and loss of appetite
- tiredness

Tell your doctor if you have any side effect that bothers you or does not go away.

These are not all the possible side effects of romidepsin. For more information, ask your doctor or pharmacist.

Call your doctor for medical advice about side effects. You may report side effects to FDA at 1-800-FDA-1088.

### **General information about romidepsin**

Medicines are sometimes prescribed for purposes other than those listed in a Patient Information leaflet.

This Patient Information leaflet summarizes the most important information about romidepsin. If you would like more information, talk with your doctor. You can ask your pharmacist or doctor for information about romidepsin that is written for health professionals.

For more information, call Pfizer Inc. at 1-800-438-1985.

### **What are the ingredients in romidepsin?**

**Active ingredient:** romidepsin

**Inactive ingredients:** povidone. The diluent contains 80% propylene glycol and 20% dehydrated alcohol.

This Patient Information has been approved by the U.S. Food and Drug Administration.

Distributed by:

Pfizer Labs  
Division of Pfizer Inc  
New York, NY 10017

Manufactured by:

Ben Venue Laboratories, Inc.  
Bedford, OH 44146

or

Baxter Oncology GmbH  
Halle/Westfalen, Germany

Revised: February/2018

ROMPPI.007 2/2018