

TYGACIL[®]

(Tigecycline)

1. NAME OF THE MEDICINAL PRODUCT

Tygacil[®]

2. QUALITATIVE AND QUANTITATIVE COMPOSITION

Active ingredients, active moieties

Tigecycline

Composition

Tigecycline Lactose Formulation:

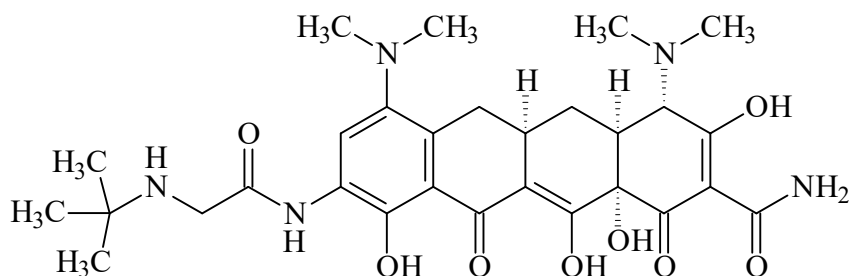
Tigecycline for injection is supplied in single-dose, 5 mL, Type 1 glass vials containing 50 mg lyophilized powder for infusion.

Each vial contains 100 mg of lactose monohydrate. The pH is adjusted with hydrochloric acid, and if necessary sodium hydroxide.¹

Chemical Name

(4S,4aS,5aR,12aS)-9-[2-(tert-butylamino)acetamido]-4,7-bis(dimethylamino)-1,4,4a,5,5a,6,11,12a-octahydro-3,10,12,12a-tetrahydroxy-1,11-dioxo-2-naphthacenicarboxamide.²

Structure³



Molecular Formula

C₂₉H₃₉N₅O₈³

Molecular Weight585.65³**Physical Characteristics**Tigecycline is an orange lyophilized powder or cake.⁴**3. PHARMACEUTICAL FORM**Sterile, lyophilized powder for intravenous infusion.⁵**4. CLINICAL PARTICULARS****4.1. THERAPEUTIC INDICATIONS**Adults**Tigecycline is indicated for treatment of the following infections in adults:**

- Complicated skin and skin structure infections (cSSSI), including those with methicillin-resistant *Staphylococcus aureus* (MRSA)⁶

Tigecycline is not indicated for the treatment of diabetic foot infections (DFI). (See Section **5.1. Pharmacodynamic Properties, Clinical Trial Data on Efficacy**)^{7,8}

- Complicated intra-abdominal infections (cIAI)⁹
- Community-acquired pneumonia (CAP)¹⁰

Tigecycline is not indicated for the treatment of hospital-acquired or ventilator-associated pneumonia.¹⁹² (See Section **4.4. Special Warnings and Precautions for Use**)Pediatrics¹⁹³

Tigecycline is indicated in children from the age of eight years for treatment of the following infections only in situations where other alternative antibiotics are not suitable:

- Complicated skin and skin structure infections (cSSSI), including those with methicillin-resistant *Staphylococcus aureus* (MRSA)

Tigecycline is not indicated for the treatment of diabetic foot infections (DFI). (See Section **5.1. Pharmacodynamic Properties**)

- Complicated intra-abdominal infections (cIAI)

4.2. POSOLOGY AND METHOD OF ADMINISTRATION

The recommended dosage regimen for adults for tigecycline is an initial dose of 100 mg, followed by 50 mg every 12 hours.^{11,12} Intravenous (IV) infusions of tigecycline should be administered over approximately 30 to 60 minutes every 12 hours.¹³

The recommended duration of treatment with tigecycline for cSSSI or for cIAI is 5 to 14 days.^{14,15} The recommended duration of treatment with tigecycline for CAP is 7 to 14 days.¹⁶ The duration of therapy should be guided by the severity and site of the infection and the patient's clinical and bacteriological progress.

Use in patients with renal impairment

No dosage adjustment of tigecycline is necessary in patients with renal impairment or in patients undergoing hemodialysis.¹⁷ (See Section **5.2. Pharmacokinetic Properties, Renal insufficiency**)

Use in patients with hepatic impairment

No dosage adjustment is necessary in patients (including pediatrics)¹⁹³ with mild to moderate hepatic impairment (Child Pugh A and Child Pugh B). Based on the pharmacokinetic profile of tigecycline in patients with severe hepatic impairment (Child Pugh C), the dose of tigecycline should be reduced by 50%.¹⁹³ Adult dose should be altered to 100 mg followed by 25 mg every 12 hours.¹⁸ Patients with severe hepatic impairment (Child Pugh C) should be treated with caution and monitored for treatment response. (See Section **5.2. Pharmacokinetic Properties, Hepatic insufficiency**)

Use in children

Tigecycline is only to be used to treat patients aged 8 years and older after consultation with a physician with appropriate experience in the management of infectious diseases. Tigecycline should not be used in children under 8 years of age due to the lack of data on safety and efficacy in this age group and because of teeth discoloration. (See Section **4.4. Special Warnings and Precautions for Use**)¹⁹³

Pediatric patients aged 8 to 11 years should receive 1.2 mg/kg of tigecycline every 12 hours intravenously to a maximum dose of 50 mg of tigecycline every 12 hours.¹⁹²

Pediatric patients aged 12 to 17 years should receive 50 mg of tigecycline every 12 hours.¹⁹²

Intravenous (IV) infusions of tigecycline should be administered over approximately 30 to 60 minutes every 12 hours.¹⁹³

The proposed pediatric doses of tigecycline were chosen based on exposures observed in pharmacokinetic trials, which included small numbers of pediatric patients (See Section **5.2. Pharmacokinetic Properties**).¹⁹²

Use in elderly

In a pooled analysis of 3,900 subjects who received tigecycline in Phase 3 and 4 clinical studies, 1,026 were 65 years and over. Of these, 419 were 75 years and over. No unexpected overall differences in safety were observed between these subjects and younger subjects. No dosage adjustment is necessary in elderly patients.¹⁹

Race and gender

No dosage adjustment is necessary based on race or gender. (See Section **5.2. Pharmacokinetic Properties**).

Mode of administration

Intravenous infusion.

4.3. CONTRAINDICATIONS

Tigecycline is contraindicated for use in patients who have known hypersensitivity to tigecycline.

4.4. SPECIAL WARNINGS AND PRECAUTIONS FOR USE

An increase in all-cause mortality has been observed across Phase 3 and 4 clinical trials in tigecycline-treated subjects versus comparator-treated subjects. In a pooled analysis of all 13 Phase 3 and 4 trials that included a comparator, death occurred in 4.0% (150/3788) of subjects receiving tigecycline and 3.0% (110/3646) of subjects receiving comparator drugs resulting in an unadjusted risk difference of 0.9% (95% CI 0.1, 1.8). In a pooled analysis of these trials, based on a random effects model by trial weight, an adjusted risk difference of all-cause mortality was 0.6% (95% CI 0.1, 1.2) between tigecycline and comparator-treated subjects. The cause of this increase has not been established. This increase in all-cause mortality should be considered when selecting among treatment options. (See Section **4.8. Undesirable Effects**)^{20,21}

Anaphylactic reaction/anaphylactoid reactions have been reported with nearly all antibacterial agents, including tigecycline, and may be life-threatening.^{22,196}

Glycylcycline class antibiotics are structurally similar to tetracycline class antibiotics.^{23,24} Therefore, tigecycline should be administered with caution in patients with known hypersensitivity to tetracycline class antibiotics.

Results of studies in rats with tigecycline have shown bone discoloration. Tigecycline may be associated with permanent tooth discoloration in humans during tooth development.^{25,26}

Pseudomembranous colitis has been reported with nearly all antibacterial agents and may range in severity from mild to life-threatening. Therefore, it is important to consider this diagnosis in patients who present with diarrhoea subsequent to the administration of any antibacterial agent.^{27,196}

Caution should be exercised when considering tigecycline monotherapy in patients with cIAI secondary to clinically apparent intestinal perforation. In Phase 3 and 4 cIAI studies (n=2,775), 140/1382 tigecycline-treated subjects and 142/1393 comparator-treated subjects presented with intestinal perforations. Of these subjects, 8/140 subjects treated with tigecycline and 8/142 subjects treated with comparator developed sepsis/septic shock. The relationship of this outcome to treatment cannot be established.¹⁹

Isolated cases of significant hepatic dysfunction and hepatic failure have been reported in patients being treated with tigecycline.

Glycylcycline class antibiotics are structurally similar to tetracycline class antibiotics²⁸ and may have similar adverse effects. Such effects may include: photosensitivity, pseudotumor cerebri, pancreatitis, and anti-anabolic action (which has led to increased BUN, azotemia, acidosis, and hyperphosphatemia).^{29,30,31}

Pancreatitis acute which can be fatal, has occurred (frequency: uncommon) in association with tigecycline treatment. (See Section **4.8. Undesirable Effects**)¹⁹⁶ The diagnosis of pancreatitis acute should be considered in patients taking tigecycline who develop clinical symptoms, signs, or laboratory abnormalities suggestive of pancreatitis acute¹⁹⁶. Cases have been reported in patients without known risk factors for pancreatitis. Patients usually improve after tigecycline discontinuation. Consideration should be given to the cessation of the treatment with tigecycline in patients suspected of having developed pancreatitis.³²

Monitoring of blood coagulation parameters, including blood fibrinogen, is recommended prior to treatment initiation with tigecycline and regularly while on treatment. (See Section **4.8. Undesirable Effects**)¹⁹⁴

The safety and efficacy of tigecycline in patients with hospital acquired pneumonia (HAP) have not been established. In a study of subjects with HAP, subjects were randomized to receive tigecycline (100 mg initially, then 50 mg every 12 hours) or a comparator. In addition, subjects were allowed to receive specified adjunctive therapies. The sub-group of subjects with ventilator-associated pneumonia (VAP) who received tigecycline had lower cure rates (47.9% versus 70.1% for the clinically evaluable population) and greater mortality (25/131 [19.1%] versus 15/122 [12.3%]) than the comparator. Of those subjects with VAP and bacteremia at baseline, those who received tigecycline had greater mortality (9/18 [50.0%] versus 1/13 [7.7%]) than the comparator.^{21,33,34,35,36,37}

As with other antibiotic preparations, use of this drug may result in overgrowth of non-susceptible organisms, including fungi. Patients should be carefully monitored during therapy. If superinfection occurs, appropriate measures should be taken.³⁸

*Pediatric population*¹⁹³

Clinical experience in the use of tigecycline for the treatment of infections in pediatric patients aged 8 years and older is very limited. (See Sections **4.8. Undesirable Effects** and **5.1. Pharmacodynamic Properties**) Consequently, use in children should be restricted to those clinical situations where no alternative antibacterial therapy is available.

Nausea and vomiting are very common adverse reactions in children and adolescents. (See Section **4.8. Undesirable Effects**) Attention should be paid to possible dehydration.

Abdominal pain is commonly reported in children as it is in adults. Abdominal pain may be indicative of pancreatitis. If pancreatitis develops, treatment with tigecycline should be discontinued.

Liver function tests, coagulation parameters, hematology parameters, amylase and lipase should be monitored prior to treatment initiation with tigecycline and regularly while on treatment.

Tigecycline should not be used in children under 8 years of age due to the lack of safety and efficacy data in this age group and because tigecycline may be associated with permanent teeth discoloration. (See Sections **4.2. Posology and Method of Administration** and **4.8. Undesirable Effects**)

4.5. INTERACTION WITH OTHER MEDICINAL PRODUCTS AND OTHER FORMS OF INTERACTION

Tigecycline (100 mg followed by 50 mg every 12 hours) and digoxin (0.5 mg followed by 0.25 mg every 24 hours) were co-administered to healthy subjects in a drug interaction study. Tigecycline slightly decreased the C_{max} of digoxin by 13%, but did not affect the AUC or clearance of digoxin. This small change in C_{max} did not affect the steady-state pharmacodynamic effects of digoxin as measured by changes in ECG intervals. In addition, digoxin did not affect the pharmacokinetic profile of tigecycline. Therefore, no dosage adjustment is necessary when tigecycline is administered with digoxin.³⁹

Concomitant administration of tigecycline (100 mg followed by 50 mg every 12 hours) and warfarin (25 mg single dose) to healthy subjects resulted in a decrease in clearance of R-warfarin and S-warfarin by 40% and 23%, and an increase in AUC by 68% and 29%, respectively. Tigecycline did not significantly alter the effects of warfarin on increased international normalized ratio (INR). In addition, warfarin did not affect the pharmacokinetic profile of tigecycline. However, prothrombin time or other suitable anticoagulation test should be monitored if tigecycline is administered with warfarin.⁴⁰

In vitro studies in human liver microsomes indicate that tigecycline does not inhibit metabolism mediated by any of the following 6 cytochrome CYP450 isoforms: 1A2, 2C8, 2C9, 2C19, 2D6, and 3A4. Therefore, tigecycline is not expected to alter the metabolism of drugs metabolized by these enzymes.^{41,42} In addition, because tigecycline is not extensively metabolized, clearance of tigecycline is not expected to be affected by drugs that inhibit or induce the activity of these CYP450 isoforms.⁴³

In vitro studies using Caco-2 cells indicate that tigecycline does not inhibit digoxin flux, suggesting that tigecycline is not a P-glycoprotein (P-gp) inhibitor. This *in vitro* information is consistent with the lack of effect of tigecycline on digoxin clearance noted in the *in vivo* drug interaction study described above.¹⁹

Tigecycline is a substrate of P-gp based on an *in vitro* study using a cell line overexpressing P-gp. The potential contribution of P-gp-mediated transport to the *in vivo* disposition of tigecycline is not known. Co-administration of P-gp inhibitors (e.g., ketoconazole or cyclosporine) or P-gp inducers (e.g., rifampicin) could affect the pharmacokinetics of tigecycline.¹⁹

Concurrent use of antibiotics with oral contraceptives may render oral contraceptives less effective.⁴⁴

Concomitant use of tigecycline and calcineurin inhibitors such as tacrolimus or cyclosporine may lead to an increase in serum trough concentrations of the calcineurin inhibitors. Therefore, serum concentrations of the calcineurin inhibitor should be monitored during treatment with tigecycline to avoid drug toxicity.¹⁹⁵

Interference with laboratory and other diagnostic tests

There are no reported drug-laboratory test interactions.

4.6. FERTILITY, PREGNANCY AND LACTATION

Pregnancy

Tigecycline may cause fetal harm when administered to a pregnant woman. Results of animal studies indicate that tigecycline crosses the placenta and is found in fetal tissues.⁴⁵ Decreased fetal weights in rats and rabbits (with associated delays in ossification) have been observed with tigecycline.^{46,47,197}

Tigecycline was not teratogenic in the rat or rabbit (See Section 5.3. Preclinical Safety Data)⁴⁸. There are no adequate and well-controlled studies of tigecycline in pregnant women. Tigecycline should be used during pregnancy only if the potential benefit justifies the potential risk to the fetus.

Tigecycline has not been studied for use during labor and delivery.

Lactation

It is not known whether this drug is excreted in human milk. Available pharmacodynamic/toxicological data in animals have shown excretion of tigecycline/metabolites in milk. (See Section 5.3. Preclinical Safety Data)¹⁹⁷ Because many drugs are excreted in human milk, caution should be exercised when tigecycline is administered to a nursing woman. (See Section 4.4. Special Warnings and Precautions for Use)

Fertility

The effects of tigecycline on fertility in humans have not been studied. Nonclinical studies conducted with tigecycline in rats do not indicate harmful effects with respect to fertility or reproductive performance. (See Section 5.3. Preclinical Safety Data)^{197,197}

4.7. EFFECTS ON ABILITY TO DRIVE AND USE MACHINES

Tigecycline can cause dizziness (See Section 4.8. Undesirable Effects), which may impair the ability to drive and/or operate machinery.

4.8. UNDESIRABLE EFFECTS

Expected frequency of adverse reactions is presented in CIOMS frequency categories:	
Very common	≥10%
Common	≥1% and <10%
Uncommon	≥0.1% and <1%
Rare	≥0.01% and <0.1%
Very rare	<0.01%
Frequency not known	cannot be estimated from the available data ¹⁹⁶

For patients who received tigecycline, the following adverse reactions were reported:⁵³

System Organ Class	Adverse Reaction
Blood and lymphatic system disorders	
Common	Activated partial thromboplastin time prolonged (aPTT), ¹⁹⁶ prothrombin time prolonged (PT), ¹⁹⁶ thrombocytopenia ^{19,191}
Uncommon	International normalised ratio increased (INR) ¹⁹⁶
Rare	Hypofibrinogenaemia ¹⁹⁴
Immune system disorders	
Frequency not known	Anaphylactic reaction ¹⁹⁶ /anaphylactoid reaction ^{22,196}

System Organ Class		Adverse Reaction
Metabolism and nutrition disorders		
	Common	Hypoproteinaemia ^{54,55,196} , hypoglycaemia ^{56,196} , decreased appetite ¹⁹⁶
Nervous system disorders		
	Common	Dizziness, headache ¹⁹⁶
Vascular disorders ¹⁹⁶		
	Common	Phlebitis
	Uncommon	Thrombophlebitis
Respiratory, thoracic and mediastinal disorders		
	Common	Pneumonia ⁵⁶
Gastrointestinal disorders		
	Very common	Nausea, vomiting, diarrhoea ¹⁹⁶
	Common	Abdominal pain, dyspepsia
	Uncommon	Pancreatitis acute ^{57,196}
Hepatobiliary disorders		
	Common	Aspartate aminotransferase (AST) increased ¹⁹⁶ , alanine aminotransferase (ALT) increased ^{*,54,196} , hyperbilirubinaemia ¹⁹⁶
	Uncommon	Jaundice ⁵⁸
	Frequency not known	Cholestasis ^{59,196}
*AST and ALT abnormalities in tigecycline-treated patients were reported more frequently in the post-therapy period than in those in comparator-treated patients, which occurred more often on therapy.		

System Organ Class	Adverse Reaction	
Skin and subcutaneous tissue disorders		
	Common	Pruritus, rash
	Frequency not known	Severe skin reactions, including Stevens-Johnson Syndrome ⁶⁰
General disorders and administration site conditions		
	Common	Impaired healing, ^{56,196} injection site reaction ¹⁹
	Uncommon	Injection site inflammation, injection site pain, injection site oedema ¹⁹⁶ , injection site phlebitis
Investigations		
	Common	Amylase increased ^{54,196} , blood urea increased (BUN) ¹⁹⁶

In a pooled analysis of all 13 Phase 3 and 4 trials that included a comparator, death occurred in 4.0% (150/3788) of subjects receiving tigecycline and 3.0% (110/3646) of subjects receiving comparator drugs. In a pooled analysis of these trials, the risk difference of all-cause mortality was 0.9% (95% CI 0.1, 1.8) between tigecycline and comparator-treated subjects. In a pooled analysis of these trials, based on a random effects model by trial weight, an adjusted risk difference of all-cause mortality was 0.6% (95% CI 0.1, 1.2) between tigecycline-treated and comparator-treated subjects.²¹ No significant differences were observed between tigecycline and comparators within each infection type (see Table 1).⁶¹ The cause of the imbalance has not been established. Generally, deaths were the result of worsening infection, or complications of infection or underlying co-morbidities.^{62,63,64,65}

Table 1: Subjects with Outcome of Death by Infection Type ²¹					
Infection Type	-Tigecycline -		-Comparator -		Risk Difference*
	n/N	%	n/N	%	% (95% CI)
cSSSI	12/834	1.4	6/813	0.7	0.7 (-0.5, 1.9)
cIAI	42/1382	3.0	31/1393	2.2	0.8 (-0.4, 2.1)
CAP	12/424	2.8	11/422	2.6	0.2 (-2.3, 2.7)
HAP	66/467	14.1	57/467	12.2	1.9 (-2.6, 6.4)
Non-VAP ^a	41/336	12.2	42/345	12.2	0.0 (-5.1, 5.2)
VAP ^a	25/131	19.1	15/122	12.3	6.8 (-2.9, 16.2)
RP	11/128	8.6	2/43	4.7	3.9 (-9.1, 11.6)
DFI	7/553	1.3	3/508	0.6	0.7 (-0.8, 2.2)
Overall Unadjusted	150/3788	4.0	110/3646	3.0	0.9 (0.1, 1.8)
Overall Adjusted	150/3788	4.0	110/3646	3.0	0.6 (0.1, 1.2)**

CAP = Community-acquired pneumonia; cIAI = Complicated intra-abdominal infections; cSSSI = Complicated skin and skin structure infections; HAP = hospital-acquired pneumonia; VAP = ventilator-associated pneumonia; RP = resistant pathogens; DFI = diabetic foot infections.

* The difference between the percentage of subjects who died in tigecycline and comparator treatment groups. The 95% CIs were calculated using the Wilson Score Method with continuity correction.

** Overall adjusted (random effects model by trial weight) risk difference estimate and 95% CI.

^a These are subgroups of the HAP population.

Note: The trials include 300, 305, 900 (cSSSI), 301, 306, 315, 316, 400 (cIAI), 308 and 313 (CAP), 311 (HAP), 307 [Resistant gram-positive pathogen study in subjects with MRSA or Vancomycin-Resistant *Enterococcus* (VRE)], and 319 (DFI with and without osteomyelitis).

The most common treatment-emergent adverse reactions in subjects treated with tigecycline were nausea 29.9% (19.3% mild; 9.2% moderate; 1.4% severe), and vomiting 19.9% (12.1% mild; 6.8% moderate; 1.1% severe). In general, nausea or vomiting occurred early (Days 1-2).¹⁹

Discontinuation from tigecycline was most frequently associated with nausea (1.6%) and vomiting (1.3%).¹⁹

Pediatric population¹⁹³

Very limited safety data were available from two PK studies. (See Section 5.2. **Pharmacokinetic Properties**) No new or unexpected safety concerns were observed with tigecycline in these studies.

In an open-label, single ascending dose PK study, the safety of tigecycline was investigated in 25 children aged 8 to 16 years who recently recovered from infections. The adverse reaction profile of tigecycline in these 25 subjects was generally consistent with that in adults.

The safety of tigecycline was also investigated in an open-label, ascending multi-dose PK study in 58 children aged 8 to 11 years with cSSSI (n=15), cIAI (n=24) or community-acquired pneumonia (n=19). The adverse reaction profile of tigecycline in these 58 subjects was generally consistent with that in adults, with the exception of nausea (48.3%), vomiting (46.6%) and elevated lipase in serum (6.9%) which were seen at greater frequencies in children than in adults.

4.9. OVERDOSE

No specific information is available on the treatment of overdose with tigecycline. Intravenous administration of tigecycline at a single dose of 300 mg over 60 minutes in healthy volunteers resulted in an increased incidence of nausea and vomiting.⁶⁶ In single-dose IV toxicity studies conducted with tigecycline in mice, the estimated median lethal dose (LD₅₀) was 124 mg/kg in males and 98 mg/kg in females. In rats, the estimated LD₅₀ was 106 mg/kg for both sexes.⁶⁷ Tigecycline is not removed in significant quantities by hemodialysis.¹⁷

4.10. ABUSE AND DEPENDENCE

Drug abuse and dependence have not been demonstrated and are unlikely.

5. PHARMACOLOGICAL PROPERTIES

5.1. PHARMACODYNAMIC PROPERTIES

Anti-infective

Glycylcycline antibacterial

ATC code: J01C XXX

Mechanism of action

Tigecycline, a glycylcycline antibiotic, inhibits protein translation in bacteria by binding to the 30S ribosomal subunit and blocking entry of amino-acyl tRNA molecules into the A site of the ribosome. This prevents incorporation of amino acid residues into elongating peptide chains. Tigecycline carries a glycydamido moiety attached to the 9-position of minocycline. The substitution pattern is not present in any naturally occurring or semisynthetic tetracycline and imparts certain microbiologic properties that transcend any known tetracycline-derivative *in vitro* or *in vivo* activity.^{68,69,70} In addition, tigecycline is able to overcome the two major tetracycline resistance mechanisms, ribosomal protection and efflux.⁷¹ Accordingly, tigecycline has demonstrated *in vitro* and *in vivo* activity against a broad spectrum of bacterial pathogens.^{72,73,74,75,76} There has been no cross-resistance observed between tigecycline and other antibiotics.^{77,78} In *in vitro* studies, no antagonism has been observed between tigecycline and other commonly used antibiotics.⁷⁹ In general, tigecycline is considered bacteriostatic. At 4 times the minimum inhibitory concentration (MIC), a 2-log reduction in colony counts was observed with tigecycline against *Enterococcus* spp., *Staphylococcus aureus*, and *Escherichia coli*. However, tigecycline has shown some bactericidal activity, and a 3-log reduction was observed against *Neisseria gonorrhoeae*.^{80,81,82,83} Tigecycline has also demonstrated bactericidal activity against common respiratory strains of *Streptococcus pneumoniae*, *Haemophilus influenzae*, and *Legionella pneumophila*.^{84,85}

Susceptibility Test Methods

Dilution Techniques

Quantitative methods are used to determine antimicrobial MICs. These MICs provide estimates of the susceptibility of bacteria to antimicrobial compounds. The MICs should be determined using a standardized procedure based on dilution methods (broth, agar, or microdilution) or equivalent using standardized inoculum and concentrations of tigecycline^{86,87,88} For broth dilution tests for aerobic organisms, MICs must be determined using testing medium that is fresh (<12 hours old).⁸⁹ The MIC values should be interpreted according to the criteria provided in Table 2.⁹⁰

Diffusion Techniques

Quantitative methods that require measurement of zone diameters also provide reproducible estimates of the susceptibility of bacteria to antimicrobial compounds. The standardized procedure requires the use of standardized inoculum concentrations.^{88,91} This procedure uses paper disks impregnated with 15 µg tigecycline to test the susceptibility of microorganisms to tigecycline.^{92,93} Interpretation involves correlation of the diameter obtained in the disk test with the MIC for tigecycline. Reports from the laboratory providing results of the standard single-disk susceptibility test with a 15 µg tigecycline disk should be interpreted according to the criteria in Table 2.^{90,94}

Table 2. Susceptibility Test Result Interpretive Criteria for Tigecycline						
Pathogen	Minimum Inhibitory Concentrations ($\mu\text{g/mL}$)			Disk Diffusion (zone diameters in mm)		
	S	I	R	S	I	R
<i>Staphylococcus aureus</i> (including methicillin-resistant isolates)	$\leq 0.5^a$	-	-	≥ 19	-	-
<i>Streptococcus</i> spp. other than <i>S. pneumoniae</i>	$\leq 0.25^a$	-	-	≥ 19	-	-
<i>Streptococcus pneumoniae</i>	$\leq 0.12^a$	-	-	≥ 21	-	-
<i>Enterococcus faecalis</i> (vancomycin-susceptible isolates only)	$\leq 0.25^a$	-	-	≥ 19	-	-
<i>Enterobacteriaceae</i> ^b	≤ 2	4	≥ 8	≥ 19	15-18	≤ 14
<i>Haemophilus influenzae</i>	$\leq 1^a$	-	-	≥ 21	-	-
<i>Moraxella catarrhalis</i>	$\leq 0.12^a$	-	-	≥ 27	-	-
Anaerobes ^c	≤ 4	8	≥ 16	n/a	n/a	n/a

S=Susceptible; I=Intermediate; R=Resistant

^a The current absence of resistant isolates precludes defining any results other than “Susceptible.” Isolates yielding MIC results suggestive of “Non-susceptible” category should be submitted to reference laboratory for further testing.

^b Tigecycline has decreased *in vitro* activity against *Morganella* spp., *Proteus* spp. and *Providencia* spp.

^c Agar dilution.

A report of “Susceptible” indicates that the pathogen is likely to be inhibited if the antimicrobial compound reaches the concentrations usually achievable. A report of “Intermediate” indicates that the result should be considered equivocal, and if the microorganism is not fully susceptible to alternative, clinically feasible drugs, the test should be repeated. This category implies possible clinical applicability in body sites where the drug is physiologically concentrated or in situations where high dosage of drug can be used. This category also provides a buffer zone that prevents small uncontrolled technical factors from causing major discrepancies in interpretation. A report of “Resistant” indicates that the pathogen is not likely to be inhibited if the antimicrobial compound reaches the concentrations usually achievable; other therapy should be selected.

Quality Control

As with other susceptibility techniques, the use of laboratory control microorganisms is required to control the technical aspects of the laboratory standardized procedures.^{86,87,88} Standard tigecycline powder should

provide the MIC values provided in Table 3.⁹⁵ For the diffusion technique using the 15 µg tigecycline disk, laboratories should use the criteria provided in Table 3 to test quality control strains.^{92,93,96}

QC organism	Minimum Inhibitory Concentrations (µg/mL)	Disk Diffusion (zone diameters in mm)
<i>Staphylococcus aureus</i> ATCC 25923	Not Applicable	20-25
<i>Staphylococcus aureus</i> ATCC 29213	0.03-0.25	Not Applicable
<i>Escherichia coli</i> ATCC 25922	0.03-0.25	20-27
<i>Enterococcus faecalis</i> ATCC 29212	0.03-0.12	Not Applicable
<i>Pseudomonas aeruginosa</i> ATCC 27853	Not Applicable	9-13
<i>Streptococcus pneumoniae</i> ATCC 49619	0.016-0.12	23-29
<i>Haemophilus influenzae</i> ATCC 49247	0.06-0.5	23-31
<i>Neisseria gonorrhoeae</i> ATCC 49226	Not Applicable	30-40
<i>Bacteroides fragilis</i> ATCC 25285	0.12-1	Not Applicable
<i>Bacteroides thetaiotaomicron</i> ATCC 29741	0.5-2	Not Applicable
<i>Eubacterium lentum</i> ATCC 43055	0.06-0.5	Not Applicable
<i>Clostridium difficile</i> ATCC 70057	0.12-1	Not Applicable
ATCC = American Type Culture Collection		

The prevalence of acquired resistance may vary geographically and with time for selected species, and local information on resistance is desirable, particularly when treating severe infections. The information below provides only approximate guidance on the probability as to whether the microorganism will be susceptible to tigecycline or not:^{6,9,10,96,97,98,99,100,101,102}

Susceptible

Gram-positive aerobes:

Enterococcus avium

Enterococcus casseliflavus

*Enterococcus faecalis** (includes vancomycin-susceptible strains)

Enterococcus faecalis (includes vancomycin-resistant strains)

Enterococcus faecium (includes vancomycin-susceptible and -resistant strains)

Enterococcus gallinarum

Listeria monocytogenes

*Staphylococcus aureus** (includes methicillin-susceptible and -resistant strains, including isolates that bear molecular and virulence markers commonly associated with community-acquired MRSA including the SCCmec type IV element and the pvl gene)

Staphylococcus epidermidis (includes methicillin-susceptible and -resistant strains)

Staphylococcus haemolyticus

*Streptococcus agalactiae**

*Streptococcus anginosus** (includes *S. anginosus*, *S. intermedius*, *S. constellatus*)

*Streptococcus pyogenes**

*Streptococcus pneumoniae** (penicillin-susceptible isolates)

Streptococcus pneumoniae (penicillin-resistant isolates)

Viridans group streptococci

Gram-negative aerobes:

Acinetobacter calcoaceticus/baumannii complex

Aeromonas hydrophila

*Citrobacter freundii**

Citrobacter koseri

Enterobacter aerogenes

*Enterobacter cloacae**

*Escherichia coli** (including extended spectrum beta lactamase-producing strains)

*Haemophilus influenzae**

Haemophilus parainfluenzae

*Klebsiella oxytoca**

*Klebsiella pneumoniae** (including extended spectrum beta lactamase- producing strains)

Klebsiella pneumoniae (including AmpC-producing strains)

*Legionella pneumophila**

*Moraxella catarrhalis**

Neisseria gonorrhoeae

Neisseria meningitidis

Pasteurella multocida

Salmonella enterica ser. Enteritidis

Salmonella enterica ser. Paratyphi

Salmonella enterica ser. Typhi

Salmonella enterica ser. Typhimurium

Serratia marcescens

Shigella boydii

Shigella dysenteriae

Shigella flexneri

Shigella sonnei

Stenotrophomonas maltophilia

Anaerobic bacteria:

*Bacteroides fragilis**

Bacteroides distasonis

Bacteroides ovatus

*Bacteroides thetaiotaomicron**

*Bacteroides uniformis**

*Bacteroides vulgatus**

Clostridium difficile

*Clostridium perfringens**

Peptostreptococcus spp.

*Peptostreptococcus micros**

Porphyromonas spp.

Prevotella spp.

Atypical bacteria:

*Chlamydia pneumoniae**

Mycobacterium abscessus

Mycobacterium chelonae

Mycobacterium fortuitum

*Mycoplasma pneumoniae**

*Clinical efficacy has been demonstrated for susceptible isolates in the approved clinical indications.

Resistant

Gram-negative aerobes:

Pseudomonas aeruginosa

Anaerobic bacteria:

No naturally-occurring species have been found to be inherently resistant to tigecycline.

Resistance:

There has been no cross-resistance observed between tigecycline and other antibiotics.

Tigecycline is able to overcome the two major tetracycline resistance mechanisms, ribosomal protection and efflux.

In *in vitro* studies, no antagonism has been observed between tigecycline and any other commonly used antibiotic class.

Clinical trial data on efficacy

Complicated Skin and Skin Structure Infections (cSSSI)

Tigecycline was evaluated in adults for the treatment of cSSSI in two randomized, double-blind, active-controlled, multinational, multicenter studies. These studies compared tigecycline (100 mg IV initial dose followed by 50 mg every 12 hours) with vancomycin (1 g IV every 12 hours)/aztreonam (2 g IV every 12 hours) for 5 to 14 days.¹⁴ Subjects with complicated deep soft tissue infections, including wound infections and cellulitis (≥ 10 cm, requiring surgery/drainage or with complicated underlying disease), major abscesses, infected ulcers, and burns were enrolled in the studies.¹⁰⁴ The primary efficacy endpoint was the clinical response at the test of cure (TOC) visit in the co-primary populations of the clinically evaluable (CE) and clinical modified intent-to-treat (c-mITT) subjects.¹⁰⁵ See Table 4^{106,107}

	Tigecycline ^a n/N (%)	Vancomycin/Aztreonam ^b n/N (%)
CE	365/422 (86.5)	364/411 (88.6)
c-mITT	429/538 (79.7)	425/519 (81.9)
^a 100 mg initially, followed by 50 mg every 12 hours		
^b Vancomycin (1 g IV every 12 hours)/Aztreonam (2 g IV every 12 hours)		

Clinical cure rates at TOC by pathogen in microbiologically evaluable (ME) subjects with cSSSI are presented in Table 5.^{101,108}

Pathogen	Tigecycline n/N (%)	Vancomycin/ Aztreonam n/N (%)
<i>Escherichia coli</i>	29/36 (80.6)	26/30 (86.7)
<i>Enterobacter cloacae</i>	10/12 (83.3)	15/15 (100)
<i>Enterococcus faecalis</i> (vancomycin-susceptible only)	15/21 (71.4)	19/24 (79.2)
Methicillin-susceptible <i>Staphylococcus aureus</i> (MSSA) ^b	124/137 (90.5)	113/120 (94.2)
Methicillin-resistant <i>Staphylococcus aureus</i> (MRSA) ^b	79/95 (83.2)	46/57 (80.7)
CA-MRSA ^c	13/20 (65.0)	10/12 (83.3)
<i>Streptococcus agalactiae</i>	8/8 (100)	11/14 (78.6)
<i>Streptococcus anginosus</i> grp. ^d	17/21 (81.0)	9/10 (90.0)
<i>Streptococcus pyogenes</i>	31/32 (96.9)	24/27 (88.9)
<i>Bacteroides fragilis</i>	7/9 (77.8)	4/5 (80.0)

^a Two pivotal studies from cSSSI and two Phase 3 Resistant Pathogen studies
^b Includes cases of concurrent bacteremia
^c CA-MRSA = community acquired (MRSA isolates that bear molecular and virulence markers commonly associated with community acquired MRSA, including SCCmec type IV element and the pvl gene)
^d Includes *Streptococcus anginosus*, *Streptococcus intermedius*, and *Streptococcus constellatus*

Tigecycline did not meet non-inferiority criteria in comparison with ertapenem in a study of subjects with diabetic foot infection (See Table 6).^{7,8} This was a randomized, double-blind, multinational, multicenter trial comparing tigecycline (150 mg every 24 hours) with ertapenem (1 g every 24 hours, with or without vancomycin) for up to 28 days. The primary efficacy endpoint was the clinical response at the TOC assessment in the co-primary CE and c-mITT populations. The non-inferiority margin was -10% for the difference in cure rates between the 2 treatments.

	Tigecycline ^a n/N (%)	Ertapenem ^b (±Vancomycin) n/N (%)
CE	316/408 (77.5%) ^c	334/405 (82.5%) ^c
c-mITT	340/476 (71.4%) ^d	363/466 (77.9%) ^d

^a 150 mg once every 24 hours
^b 1 g once every 24 hours
^c Adjusted difference = -5.5; 95% CI = -11.0, 0.1
^d Adjusted difference = -6.7; 95% CI = -12.3, -1.1

Complicated Intra-abdominal Infections (cIAI)

Tigecycline was evaluated in adults for the treatment of cIAI in two randomized, double-blind, active-controlled, multinational, multicenter studies. These studies compared tigecycline (100 mg IV initial dose followed by 50 mg every 12 hours) with imipenem/cilastatin (500 mg IV every 6 hours) for 5 to 14 days.¹⁵ Subjects with complicated diagnoses including appendicitis, cholecystitis, diverticulitis, gastric/duodenal perforation, intra-abdominal abscess, perforation of the intestine, and peritonitis were enrolled in the studies.¹⁰⁹ The primary efficacy endpoint was the clinical response at the TOC visit for the co-primary populations of the ME and the microbiologic modified intent-to-treat (m-mITT) subjects.¹¹⁰ See Table 7.^{111,112}

	Tigecycline ^a n/N (%)	Imipenem/ Cilastatin ^b n/N (%)
ME	441/512 (86.1)	442/513 (86.2)
m-mITT	506/631 (80.2)	514/631 (81.5)

^a 100 mg initially, followed by 50 mg every 12 hours
^b Imipenem/Cilastatin (500 mg every 6 hours)

Clinical cure rates at TOC by pathogen in ME subjects with cIAI are presented in Table 8.^{9,113}

Pathogen	Tigecycline n/N (%)	Imipenem/Cilastatin n/N (%)
<i>Citrobacter freundii</i>	12/16 (75.0)	3/4 (75.0)
<i>Enterobacter cloacae</i>	15/17 (88.2)	16/17 (94.1)
<i>Escherichia coli</i>	284/336 (84.5)	297/342 (86.8)
<i>Klebsiella oxytoca</i>	19/20 (95.0)	17/19 (89.5)
<i>Klebsiella pneumoniae</i> ^b	42/47 (89.4)	46/53 (86.8)
<i>Enterococcus faecalis</i>	29/38 (76.3)	35/47 (74.5)
Methicillin-susceptible <i>Staphylococcus aureus</i> (MSSA) ^c	26/28 (92.9)	22/24 (91.7)
Methicillin-resistant <i>Staphylococcus aureus</i> (MRSA) ^c	16/18 (88.9)	1/3 (33.3)
<i>Streptococcus anginosus grp.</i> ^d	101/119 (84.9)	60/79 (75.9)
<i>Bacteroides fragilis</i>	68/88 (77.3)	59/73 (80.8)
<i>Bacteroides thetaiotaomicron</i>	36/41 (87.8)	31/36 (86.1)
<i>Bacteroides uniformis</i>	12/17 (70.6)	14/16 (87.5)
<i>Bacteroides vulgatus</i>	14/16 (87.5)	4/6 (66.7)
<i>Clostridium perfringens</i>	18/19 (94.7)	20/22 (90.9)
<i>Peptostreptococcus micros</i>	13/17 (76.5)	8/11 (72.7)

^a Two cIAI pivotal studies and two Phase 3 Resistant Pathogen studies
^b Includes ESBL producing isolates
^c Includes cases of concurrent bacteremia
^d Includes *Streptococcus anginosus*, *Streptococcus intermedius*, and *Streptococcus constellatus*

Community-Acquired Pneumonia (CAP)

Tigecycline was evaluated in adults for the treatment of CAP in two randomized, double-blind, active-controlled, multinational, multicenter studies (Studies 308 and 313). These studies compared tigecycline (100 mg IV initial dose followed by 50 mg every 12 hours) with levofloxacin (500 mg IV every 12 or 24 hours). In one study (Study 308), after at least 3 days of IV therapy, a switch to oral levofloxacin (500 mg daily) was permitted for both treatment arms. Total therapy was 7 to 14 days. Subjects with CAP who required hospitalization and IV therapy were enrolled in the studies. The primary efficacy endpoint was the clinical response at the TOC visit in the co-primary populations of the CE and c-mITT subjects.^{16,114} See Table 9.^{16,115,116,117,118} Clinical cure rates at TOC by pathogen in the ME subjects are presented in Table 10.¹¹⁹

	Tigecycline ^a n/N (%)	Levofloxacin ^b n/N (%)
Integrated		
CE	253/282 (89.7)	252/292 (86.3)
c-mITT	319/394 (81.0)	321/403 (79.7)
Study 308		
CE	125/138 (90.6)	136/156 (87.2)
c-mITT	149/191 (78.0)	158/203 (77.8)
Study 313		
CE	128/144 (88.9)	116/136 (85.3)
c-mITT	170/203 (83.7)	163/200 (81.5)

^a 100 mg initially, followed by 50 mg every 12 hours
^b Levofloxacin (500 mg IV every 12 or 24 hours); in one study (Study 308), after at least 3 days of IV therapy, a switch to oral levofloxacin (500 mg daily) was permitted for both treatment arms

Pathogen	Tigecycline n/N (%)	Levofloxacin n/N (%)
<i>Chlamydia pneumoniae</i>	18/19 (94.7)	26/27 (96.3)
<i>Haemophilus influenzae</i>	14/17 (82.4)	13/16 (81.3)
<i>Legionella pneumophila</i>	10/10 (100.0)	6/6 (100.0)
<i>Moraxella catarrhalis</i>	3/3 (100.0)	3/5 (60.0)
<i>Mycoplasma pneumoniae</i>	37/39 (94.9)	44/48 (91.7)
Methicillin-susceptible <i>Staphylococcus aureus</i> (MSSA)	9/12 (75.0)	8/10 (80.0)
<i>Streptococcus pneumoniae</i> (penicillin-susceptible only) ^b	44/46 (95.7)	39/44 (88.6)

^a Two CAP pivotal studies
^b Includes cases of concurrent bacteremia

Methicillin-Resistant *Staphylococcus aureus* (MRSA) and Vancomycin-Resistant *Enterococcus* (VRE) spp.

Tigecycline was evaluated in adults for the treatment of various serious infections (cIAI, cSSSI, and other infections) due to VRE and MRSA in Study 307.^{120,121}

Study 307 was a randomized, double-blind, active-controlled, multinational, multicenter study evaluating tigecycline (100 mg IV initial dose followed by 50 mg every 12 hours) and vancomycin (1 g IV every 12 hours) for the treatment of infections due to MRSA and evaluating tigecycline (100 mg IV initial dose followed by 50 mg every 12 hours) and linezolid (600 mg IV every 12 hours) for the treatment of infections due to VRE for 7 to 28 days. Subjects with cIAI, cSSSI, and other infections were enrolled in this study.^{120,121,122,123} The primary efficacy endpoint was the clinical response at the TOC visit for the co-primary populations of the ME and the m-mITT subjects.¹²² For clinical cure rates see Table 11^{123,124,125,126,127} for MRSA and Table 12^{128,129,130} for VRE.

	Tigecycline ^b n/N (%)	Vancomycin ^c n/N (%)
Study 307		
ME	70/86 (81.4)	26/31 (83.9)
cIAI	13/14 (92.9)	4/4 (100.0)
cSSSI	51/59 (86.4)	20/23 (87.0)
m-mITT	75/100 (75.0)	27/33 (81.8)
cIAI	13/15 (86.7)	5/6 (83.3)
cSSSI	55/70 (78.6)	20/23 (87.0)

^a Study included subjects with cIAI, cSSSI, and other infections.
^b 100 mg initially, followed by 50 mg every 12 hours
^c 1 g IV every 12 hours

	Tigecycline ^b n/N (%)	Linezolid ^c n/N (%)
Study 307		
ME	3/3 (100.0)	2/3 (66.7)
cIAI	1/1 (100.0)	0/1 (0.0)
cSSSI	1/1 (100.0)	2/2 (100.0)
m-mITT	3/8 (37.5)	2/3 (66.7)
cIAI	1/2 (50.0)	0/1 (0.0)
cSSSI	1/2 (50.0)	2/2 (100.0)

^a Study included subjects with cIAI, cSSSI, and other infections
^b 100 mg initially, followed by 50 mg every 12 hours
^c Linezolid (600 mg IV every 12 hours)

Resistant Gram-Negative Pathogens

Tigecycline was evaluated in adults for the treatment of various serious infections (cIAI, cSSSI, CAP, and other infections) due to resistant gram-negative pathogens in Study 309.¹³²

Study 309 was an open-label, multinational, multicenter study evaluating tigecycline (100 mg IV initial dose followed by 50 mg every 12 hours) for the treatment of infections due to resistant gram-negative pathogens for 7 to 28 days. Subjects with cIAI, cSSSI, CAP, and other infections were enrolled in this study.^{133,134} The primary efficacy endpoint was the clinical response at the TOC visit for the co-primary populations of the ME and the m-mITT subjects.¹³⁵ See Table 13.^{133,134,136,137,138}

		Tigecycline ^b n/N (%)	Tigecycline ^b n/N (%)	Tigecycline ^b n/N (%)
Study 309	All ^c	<i>E. coli</i>	<i>Klebsiella pneumoniae</i>	<i>Enterobacter</i> spp.
ME	26/36 (72.2)	4/9 (44.4)	5/6 (83.3)	3/4 (75.0)
cIAI	2/2 (100.0) ^d	1/1 (100.0) ^d	1/1 (100.0)	-
cSSSI	20/24 (83.3)	3/5 (60.0)	3/3 (100.0)	3/3 (100.0)
CAP	0/1 (0.0)	-	-	0/1 (0.0)
m-mITT	40/75 (53.3)	5/10 (50.0)	9/13 (69.2)	8/15 (53.3)
cIAI	6/9 (66.7) ^d	2/2 (100.0) ^d	1/1 (100.0)	1/1 (100.0) ^d

cSSSI	27/38 (71.1)	3/5 (60.0)	6/7 (85.7)	7/8 (87.5)
CAP	0/1 (0.0)	-	-	0/1 (0.0)
<p>^a Study included subjects with cIAI, cSSSI, CAP and other infections</p> <p>^b 100 mg initially, followed by 50 mg every 12 hours</p> <p>^c Includes other pathogens besides <i>E. coli</i>, <i>Klebsiella pneumoniae</i>, and <i>Enterobacter</i> spp.</p> <p>^d Excludes subjects with inadequate source control</p>				

Rapidly-Growing Mycobacterial Infections

In uncontrolled clinical studies and compassionate-use experience from 8 countries, 52 subjects with rapidly-growing mycobacterial infections (most frequently *M. abscessus* lung disease) were treated with tigecycline, along with other antibiotics. The mean and median durations of treatment were approximately 5½ months and 3 months, respectively (range: 3 days to approximately 3½ years). Approximately half of the subjects achieved clinical improvement (i.e., improvement in signs and symptoms of lung disease, or healing of wound, skin lesions, or nodules in disseminated disease). Approximately half of the subjects required dose reductions or discontinued treatment due to nausea, vomiting, or anorexia.¹³⁹

Pediatric population¹⁹³

In an open-label, ascending multiple-dose study, 39 children aged 8 to 11 years with cIAI or cSSSI were administered tigecycline (0.75, 1, or 1.25 mg/kg). All patients received IV tigecycline for a minimum of 3 consecutive days to a maximum of 14 consecutive days, with the option to be switched to an oral antibiotic on or after day 4.

Clinical cure was assessed between 10 and 21 days after the administration of the last dose of treatment. The summary of clinical response in the modified intent-to-treat (mITT) population results is shown in the following table.

Clinical Cure, mITT Population			
	0.75 mg/kg	1 mg/kg	1.25 mg/kg
Indication	n/N (%)	n/N (%)	n/N (%)
cIAI	6/6 (100.0)	3/6 (50.0)	10/12 (83.3)
cSSSI	3/4 (75.0)	5/7 (71.4)	2/4 (50.0)
Overall	9/10 (90.0)	8/13 (62.0%)	12/16 (75.0)

Efficacy data shown above should be viewed with caution as concomitant antibiotics were allowed in this study. In addition, the small number of patients should also be taken into consideration.

Cardiac Electrophysiology

No significant effect of a single intravenous dose of tigecycline 50 mg or 200 mg on QTc interval was detected in a randomized, placebo- and active-controlled four-arm crossover thorough QTc study of 46 healthy subjects.¹⁹²

5.2. PHARMACOKINETIC PROPERTIES

The mean pharmacokinetic parameters of tigecycline for the recommended dosage regimen after single and multiple intravenous doses are summarized in Table 14.¹⁴⁰

Intravenous infusions of tigecycline should be administered over approximately 30 to 60 minutes.¹⁴¹

	Single Dose	Multiple Dose ^c
	100 mg	50 mg q12h
C_{max} ($\mu\text{g/mL}$) ^a	1.45 (22%)	0.87 (27%)
C_{max} ($\mu\text{g/mL}$) ^b	0.90 (30%)	0.63 (15%)
AUC ($\mu\text{g}\cdot\text{h/mL}$)	5.19 (36%)	-
AUC _{0-24h} ($\mu\text{g}\cdot\text{h/mL}$)	-	4.70 (36%)
C_{min} ($\mu\text{g/mL}$)	-	0.13 (59%)
$t_{1/2}$ (h)	27.1 (53%)	42.4 (83%)
CL (L/h)	21.8 (40%)	23.8 (33%)
CL _r (mL/min)	38.0 (82%)	51.0 (58%)
V_{ss} (L)	568 (43%)	639 (48%)
^a	30-minute infusion	
^b	60-minute infusion	
^c	100 mg initially, followed by 50 mg every 12 hours	

Absorption

Tigecycline is administered intravenously, and therefore has 100% bioavailability.¹⁴²

Distribution

The *in vitro* plasma protein binding of tigecycline ranges from approximately 71% to 89% at concentrations observed in clinical studies (0.1 to 1.0 $\mu\text{g/mL}$).^{143,144} Animal and human pharmacokinetic studies have demonstrated that tigecycline readily distributes to tissues.^{145,146} In rats receiving single or multiple doses of ¹⁴C-tigecycline, radioactivity was well distributed to most tissues, with the highest overall exposure observed in bone, bone marrow, thyroid gland, kidney, spleen, and salivary gland.¹⁴⁷ In humans, the steady-state volume of distribution of tigecycline averaged 500 to 700 L (7 to 9 L/kg), indicating tigecycline is extensively distributed beyond the plasma volume and into the tissues of humans.¹⁴⁸

Two studies examined the steady-state pharmacokinetic profile of tigecycline in specific tissues or fluids of healthy subjects receiving tigecycline 100 mg followed by 50 mg every 12 hours. In a bronchoalveolar lavage study, the tigecycline AUC_{0-12h} (134 $\mu\text{g}\cdot\text{h/mL}$) in alveolar cells was approximately 77.5-fold higher than the AUC_{0-12h} in the serum of these subjects, and the AUC_{0-12h} (2.28 $\mu\text{g}\cdot\text{h/mL}$) in epithelial lining fluid was approximately 32% higher than the AUC_{0-12h} in serum. In a skin blister study, the AUC_{0-12h} (1.61 $\mu\text{g}\cdot\text{hr/mL}$) of tigecycline in skin blister fluid was approximately 26% lower than the AUC_{0-12h} in the serum of these subjects.¹⁴⁹

In a single-dose study, tigecycline 100 mg was administered to subjects prior to undergoing elective surgery or medical procedure for tissue extraction. Tissue concentrations at 4 hours after tigecycline administration were measured in the following tissue and fluid samples: gallbladder, lung, colon, synovial fluid, and bone.¹⁴⁸ Tigecycline attained higher concentrations in tissues versus serum in gallbladder (38-fold, n=6),¹⁵⁰

lung (3.7-fold, n=5),¹⁵¹ and colon (2.3-fold, n=6).¹⁵² The concentration of tigecycline in these tissues after multiple doses has not been studied.

Metabolism

Tigecycline is not extensively metabolized.⁴³ *In vitro* studies with tigecycline using human liver microsomes, liver slices, and hepatocytes led to the formation of only trace amounts of metabolites.¹⁵³ In healthy male volunteers receiving ¹⁴C-tigecycline, tigecycline was the primary ¹⁴C-labeled material recovered in urine and feces, but a glucuronide, an N-acetyl metabolite and a tigecycline epimer (each at no more than 10% of the administered dose) were also present.^{154,155}

Elimination

The recovery of total radioactivity in feces and urine following administration of ¹⁴C-tigecycline indicates that 59% of the dose is eliminated by biliary/fecal excretion, and 33% is excreted in urine. Overall, the primary route of elimination for tigecycline is biliary excretion of unchanged tigecycline. Glucuronidation and renal excretion of unchanged tigecycline are secondary routes.¹⁵⁶

Tigecycline is a substrate of P-gp based on an *in vitro* study using a cell line overexpressing P-gp. The potential contribution of P-gp-mediated transport to the *in vivo* disposition of tigecycline is not known.¹⁹

Special populations

Hepatic insufficiency

In a study comparing 10 subjects with mild hepatic impairment (Child Pugh A), 10 subjects with moderate hepatic impairment (Child Pugh B), and five subjects with severe hepatic impairment (Child Pugh C) to 23 age- and weight-matched healthy control subjects, the single-dose pharmacokinetic disposition of tigecycline was not altered in subjects with mild hepatic impairment. However, systemic clearance of tigecycline was reduced by 25%, and the half-life of tigecycline was prolonged by 23% in subjects with moderate hepatic impairment (Child Pugh B). In addition, systemic clearance of tigecycline was reduced by 55%, and the half-life of tigecycline was prolonged by 43% in subjects with severe hepatic impairment (Child Pugh C).¹⁵⁷

Based on the pharmacokinetic profile of tigecycline, no dosage adjustment is warranted in subjects (including pediatrics)¹⁹³ with mild to moderate hepatic impairment (Child Pugh A and Child Pugh B). However, in subjects with severe hepatic impairment (Child Pugh C), the dose of tigecycline should be reduced by 50%.¹⁹³ Adult dose should be altered to 100 mg followed by 25 mg every 12 hours.¹⁵⁸ Subjects with severe hepatic impairment (Child Pugh C) should be treated with caution and monitored for treatment response. (See Section 4.2. **Posology and Method of Administration**, *Use in patients with hepatic impairment*).

Renal insufficiency

A single-dose study compared 6 subjects with severe renal impairment (creatinine clearance $Cl_{Cr} \leq 30$ mL/min), 4 end stage renal disease subjects receiving tigecycline 2 hours before hemodialysis, 4 end stage renal disease subjects receiving tigecycline after hemodialysis, and 6 healthy control subjects.

The pharmacokinetic profile of tigecycline was not altered in any of the renally-impaired subject groups, nor was tigecycline removed by hemodialysis. No dosage adjustment of tigecycline is necessary in subjects with renal impairment or in subjects undergoing hemodialysis.¹⁷ (See Section 4.2. **Posology and Method of Administration, Use in patients with renal impairment**)

Elderly

No overall differences in pharmacokinetics were observed between healthy elderly subjects (n=15, age 65-75; n=13, age >75, and younger subjects (n=18) receiving a single, 100 mg dose of tigecycline.^{159,160} Therefore, no dosage adjustment is necessary based on age.¹⁶¹

Children¹⁹³

Tigecycline pharmacokinetics were investigated in two studies. The first study enrolled children aged 8-16 years (n=24) who received single doses of tigecycline (0.5, 1, or 2 mg/kg, up to a maximum dose of 50 mg, 100 mg, and 150 mg, respectively) administered intravenously over 30 minutes. The second study was performed in children aged 8 to 11 years who received multiple doses of tigecycline (0.75, 1, or 1.25 mg/kg up to a maximum dose of 50 mg) every 12 hours administered intravenously over 30 minutes. No loading dose was administered in these studies. Pharmacokinetic parameters are summarised in the table below.

Dose Normalized to 1 mg/kg Mean ± SD Tigecycline C_{max} and AUC in Children			
Age (yr)	N	C _{max} (ng/mL)	AUC (ng•h/mL)*
Single dose			
8 – 11	8	3881 ± 6637	4034 ± 2874
12 – 16	16	8508 ± 11433	7026 ± 4088
Multiple dose			
8 – 11	42	1911 ± 3032	2404 ± 1000
* Single dose AUC _{0-∞} , multiple dose AUC _{0-12h}			

The target AUC_{0-12h} in adults after the recommended dose of 100 mg loading and 50 mg every 12 hours, was approximately 2500 ng•h/mL.

Population PK analysis of both studies identified body weight as a covariate of tigecycline clearance in children aged 8 years and older. A dosing regimen of 1.2 mg/kg of tigecycline every 12 hours (to a maximum dose of 50 mg every 12 hours) for children aged 8 to <12 years and of 50 mg every 12 hours for adolescents aged 12 to <18 years would likely result in exposures comparable to those observed in adults treated with the approved dosing regimen.

Gender

In a pooled analysis of 38 women and 298 men participating in clinical pharmacology studies, there was no significant difference in the mean (±SD) tigecycline clearance between women (20.7±6.5 L/h) and men (22.8±8.7 L/h). Therefore, no dosage adjustment is necessary based on gender.¹⁶²

Race

In a pooled analysis of 73 Asian subjects, 53 Black subjects, 15 Hispanic subjects, 190 White subjects, and 3 subjects classified as “other” participating in clinical pharmacology studies, there was no significant difference in the mean (\pm SD) tigecycline clearance among the Asian subjects (28.8 ± 8.8 L/h), Black subjects (23.0 ± 7.8 L/h), Hispanic subjects (24.3 ± 6.5 L/h), White subjects (22.1 ± 8.9 L/h), and “other” subjects (25.0 ± 4.8 L/h). Therefore, no dosage adjustment is necessary based on race.¹⁶³

5.3. PRECLINICAL SAFETY DATA

Carcinogenicity

Lifetime studies in animals have not been performed to evaluate the carcinogenic potential of tigecycline.¹⁶⁴

Mutagenicity

No mutagenic or clastogenic potential was found in a battery of tests, including an *in vitro* chromosome aberration assay in Chinese hamster ovary (CHO) cells,¹⁶⁵ *in vitro* forward mutation assay in CHO cells (HGRPT locus),¹⁶⁶ *in vitro* forward mutation assays in mouse lymphoma cells,¹⁶⁷ and *in vivo* micronucleus assay.¹⁶⁸

Reproduction toxicity

Tigecycline did not affect mating or fertility in rats at exposures up to 4.7 times the human daily dose based on AUC.¹⁶⁹ In female rats, there were no compound-related effects on ovaries or estrus cycles at exposures up to 4.7 times the human daily dose based on AUC.⁵¹

In preclinical safety studies, ¹⁴C-labeled tigecycline crossed the placenta and was found in fetal tissues, including fetal bony structures.^{Error! Reference source not found.} The administration of tigecycline was associated with slight reductions in fetal weights and an increased incidence of minor skeletal anomalies (delays in bone ossification) at exposures of 4.7 times and 1.1 times the human daily dose based on AUC in rats and rabbits, respectively.^{Error! Reference source not found.,50,Error! Reference source not found.,197}

Results from animal studies using ¹⁴C-labeled tigecycline indicate that tigecycline is excreted readily via the milk of lactating rats. Consistent with the limited oral bioavailability of tigecycline, there is little or no systemic exposure to tigecycline in the nursing pups as a result of exposure via the maternal milk.^{Error! Reference source not found.,197}

Other

Decreased erythrocytes, reticulocytes, leukocytes and platelets, in association with bone marrow hypocellularity, have been seen with tigecycline at exposures of 8.1 times and 9.8 times the human daily dose based on AUC in rats and dogs, respectively.^{26,170,171,172,173} These alterations were shown to be reversible after two weeks of dosing.^{174,175}

Bolus intravenous administration of tigecycline has been associated with a histamine response in preclinical studies.^{176,177} These effects were observed at exposures of 14.3 and 2.8 times the human daily dose based on the AUC in rats and dogs, respectively.^{26,178,179}

No evidence of photosensitivity was observed in rats following administration of tigecycline.¹⁸⁰

6. PHARMACEUTICAL PARTICULARS

6.1. LIST OF EXCIPIENTS

Lactose Monohydrate (106 mg/vial)

Sodium Hydroxide

Hydrochloric Acid

Water for Injection

Nitrogen*

*Used for sparging and blanketing the bulk solution and as an inert cover in the headspace of the filled vials.

6.2. INCOMPATIBILITIES

Tigecycline Lactose Formulation:

Compatible intravenous solutions include 0.9% Sodium Chloride Injection, USP, 5% Dextrose Injection, USP, and Lactated Ringer's Injection, USP.¹⁸¹

Tigecycline is compatible with the following drugs or diluents when used with either 0.9% Sodium Chloride Injection, USP, or 5% Dextrose Injection, USP and administered simultaneously through the same line: amikacin, dobutamine, dopamine HCl, gentamicin, haloperidol, Lactated Ringer's, lidocaine HCl, metoclopramide, morphine, norepinephrine, piperacillin/tazobactam (EDTA formulation), potassium chloride, propofol, ranitidine HCl, theophylline, and tobramycin.^{181,182,183,184}

The following drugs should not be administered simultaneously through the same line as tigecycline: amphotericin B, amphotericin B lipid complex, diazepam, esomeprazole and omeprazole.^{182,183,185}

6.3. SHELF LIFE

Tigecycline Lactose Formulation:

Tigecycline should be stored at 20°C to 25°C (68°F to 77°F) prior to reconstitution.¹⁸⁶ Once reconstituted, tigecycline may be stored at room temperature (not to exceed 25°C/77°F) for up to 24 hours (up to 6 hours in the vial and the remaining time in the IV bag).^{181,187,188,189} Alternatively, tigecycline mixed with 0.9% Sodium Chloride Injection, USP, or 5% Dextrose Injection, USP, may be stored refrigerated at 2°C to 8°C (36°F to 46°F) for up to 48 hours following immediate transfer of the reconstituted solution into the IV bag.^{187,188,189}

If the storage conditions exceed 25°C/77°F after reconstitution, tigecycline should be used immediately.^{181,189}

Reconstituted solution must be transferred and further diluted for IV infusion.

Shelf life is 24 months.

6.4. SPECIAL PRECAUTIONS FOR STORAGE

Tigecycline should be stored at 20°C to 25°C (68°F to 77°F) prior to reconstitution. Once reconstituted, tigecycline may be stored at room temperature for up to 24 hours (up to 6 hours in the vial and the remaining time in the IV bag). Alternatively, tigecycline mixed with 0.9% Sodium Chloride Injection, USP, or 5% Dextrose Injection, USP, may be stored refrigerated at 2°C to 8°C (36°F to 46°F) for up to 48 hours following immediate transfer of the reconstituted solution into the IV bag.

Reconstituted solution must be transferred and further diluted for IV infusion.

6.5. NATURE AND CONTENTS OF CONTAINER

TYGACIL® (tigecycline) Injection 50 mg is available in 5 mL, Type 1 glass vial.

6.6. SPECIAL PRECAUTIONS FOR DISPOSAL AND OTHER HANDLING

Tigecycline Lactose Formulation:

The lyophilized powder should be reconstituted with 5.3 mL of 0.9% Sodium Chloride Injection, USP, or 5% Dextrose Injection, USP, or Lactated Ringer's Injection, USP, to achieve a concentration of 10 mg/mL of tigecycline.^{5,184,190} The vial should be gently swirled until the drug dissolves.^{187,188} Withdraw 5 mL of the reconstituted solution from the vial and add to a 100 mL IV bag for infusion. For a 100 mg dose, reconstitute using two vials into a 100 mL IV bag. (Note: The vial contains a 6% overage. Thus, 5 mL of reconstituted solution is equivalent to 50 mg of the drug.) The reconstituted solution should be yellow to orange in color; if not, the solution should be discarded. Parenteral drug products should be inspected visually for particulate matter and discoloration (e.g., green or black) prior to administration whenever solution and container permit. Once reconstituted, tigecycline may be stored at room temperature (not to exceed 25°C/77°F) for up to 24 hours (up to 6 hours in the vial and the remaining time in the IV bag).^{181,189} Alternatively, tigecycline mixed with 0.9% Sodium Chloride Injection, USP, or 5% Dextrose Injection, USP may be stored refrigerated at 2°C to 8°C (36°F to 46°F) for up to 48 hours following immediate transfer of the reconstituted solution into the IV bag.^{187,188,189}

If the storage conditions exceed 25°C/77°F after reconstitution, tigecycline should be used immediately.^{181,189}

Tigecycline may be administered intravenously through a dedicated line or through a Y-site. If the same intravenous line is used for sequential infusion of several drugs, the line should be flushed before and after infusion of tigecycline with either 0.9% Sodium Chloride Injection, USP, or 5% Dextrose Injection, USP. Injection should be made with an infusion solution compatible with tigecycline and with any other drug(s) administered via this common line. (See Section 6.2. **Incompatibilities**)^{187,188}.

Tygacil/LPD/PK-06

According to CDS V 27 dated: 01 December 2020; Supersedes CDS V 26 dated: 15 November 2019

Marketed by:
Wyeth Pakistan Limited

Please visit our website www.pfizerpro.com.pk for latest version of Product leaflet.

7. REFERENCES

1. RPT-57121: Pharmaceutical Development Report for Reformulated Tygacil 50 mg Lyophilized Powder for Injection.
2. e-CTD Original Application, 2.3.S.1 – Drug Substance – 1.1.
3. e-CTD Original Application, 2.3.S.1 – Drug Substance – 1.2.
4. e-CTD Original Application, 2.3.P.1 – Drug Product, Section 1.0.
5. e-CTD Original Application, 2.3.P.1 – Description & Composition of the Drug Product, Section 1.0.
6. e-CTD Original Application, 2.7.3, Complicated Skin and Skin Structure Infections, Section 3.2.4, Table 3.2.4-1.
7. Clinical Investigation of GAR-936 Table for 3074K5-319, DFI Primary Study: Analysis of Clinical Response for Cure vs. Failure Clinically Evaluable Population Tigecycline 319 WW/DFI, 05-May-2009.
8. Clinical Investigation of GAR-936 Table for 3074K5-319, DFI Primary Study: Analysis of Clinical Response, Clinical Modified ITT Population Tigecycline 319 WW/DFI, 05-May-2009.
9. e-CTD Original Application, 2.7.3, Complicated Intra-abdominal Infections, Section 3.2.4, Table 3.2.4-1.
10. e-CTD, CAP/RP Efficacy Supplement, 2.7.3, Community-Acquired Pneumonia, Section 1.0.
11. e-CTD Original Application, 2.7.3, Complicated Skin and Skin Structure Infections, Section 4.
12. e-CTD Original Application, 2.7.3, Complicated Intra-abdominal Infections, Section 4.
13. e-CTD Original Application, 2.5, Clinical Overview, Section 2.
14. e-CTD Original Application, 2.7.3, Complicated Skin and Skin Structure Infections, Section 1.1.1.
15. e-CTD Original Application, 2.7.3, Complicated Intra-abdominal Infections, Section 1.1.1.
16. e-CTD, CAP/RP Efficacy Supplement, 2.7.3, Community-Acquired Pneumonia, Section 1.1.1.
17. e-CTD Original Application, 2.7.2.3, Section 1.8.5, Source Documentation: CSR-43752-Salacinski L, Kennedy AM, Micalizzi M. The pharmacokinetics of GAR-936 in adult subjects with various degrees of renal function: final report (protocol 3074A1-103-US).
18. e-CTD Original Application, 2.7.2.3, Section 1.8.6, Source Documentation: CSR-53265-Troy SM, Kennedy AM, Baird-Bellaire S. The Pharmacokinetics and Safety of Tigecycline (GAR-936) in Patients With Compensated and Decompensated Cirrhosis and in Matched Healthy Adults: Final Report, Wyeth Protocol 3074A1-105-EU.
19. 2.5 Clinical Overview. Justification for labeling revisions based on pooled safety data from Phase 3 and 4 Clinical Trials and from *in-vitro* P-glycoprotein studies - May 2013.

20. Tigecycline GAR-936 Benefit-Risk Assessment Feb-2010.
21. Justification for labeling revisions regarding mortality – Jun-2010.
22. Justification Document for a Safety Labeling Decision. Tigecycline: Anaphylaxis/Anaphylactoid Reactions, dated 23 February 2007.
23. e-CTD Original Application, 2.7.3 – Complicated Skin & Skin Structure Infections, Section 1.0.
24. e-CTD Original Application, 2.4 – Nonclinical Overview, Section 1.0.
25. e-CTD Original Application, 2.6.6, Section 3.1.2, Source Documentation: Anthony JR. Effect on deciduous and permanent teeth of tetracycline deposition in utero. *Postgrad Med* 1970;48:165-8.
26. e-CTD Original Application, 2.4 – Nonclinical Overview, Section 7.1.
27. Pothoulakis H, Triadafilopoulos G, et al. Antibiotic-associated colitis. *Comprehensive Therapy*. 1985;11(12):68-73.
28. xe-CTD Original Application, 2.3.S.1, Drug Substance, General Information, Section 1.3.
29. Joshi N, Miller DQ: Doxycycline revisited. *Arch Intern Med*. 1997;157: 1421-1428.
30. Micromedex® Healthcare Series, (electronic version). Thomson Micromedex, Greenwood Village, Colorado, USA. Available at: <http://www.thomsonhc.com> (cited: June 1, 2006).
31. Shils ME: Renal disease and the metabolic effects of tetracycline. *Ann Intern. Med* 1963;58:389-408.
32. Justification for a Safety Labeling Decision for Tigecycline: Pancreatitis, 04-Dec-2009.
33. e-CTD, CAP/RP Efficacy Supplement, 5.3.5.1, CSR-68685, Section 6.4.1.
34. e-CTD, CAP/RP Efficacy Supplement, 5.3.5.1, CSR-68685, Section 9.3.2, Table 9-9.
35. e-CTD, CAP/RP Efficacy Supplement, 5.3.5.1, CSR-68685, Section 10.3.1.1.
36. e-CTD, CAP/RP Efficacy Supplement, 5.3.5.1, CSR-68685, Section 10.3.3.
37. Rationale for the Precautions Section Modification 19-Feb-2009.
38. Sullivan A, Edlund C, Nord CE. Effect of antimicrobial agents on the ecological balance of human microflora. *The Lancet Infectious Diseases*. 2001;1:101-114.
39. e-CTD Original Application, 2.7.2.3, Section 1.9.1, Source Documentation: CSR-52362 - Zimmerman JJ, Kennedy AM, Harper D. A pharmacokinetic study of the potential drug interaction between tigecycline and digoxin in healthy subjects (protocol 3074A1-111-US).
40. e-CTD Original Application, 2.7.2.3, Section 1.9.2, Source Documentation: CSR-52363 - Troy SM, Kennedy AM, Harper D. A pharmacokinetic study of the potential drug interaction between tigecycline and warfarin in healthy subjects (protocol 3074A1-115-US).

41. e-CTD Original Application, 2.7.2.3, Section 1.9, Source Documentation: RPT-42413 - Dierks EA. GAR-936 (WAY-156936): Evaluation of the inhibition of human cytochromes P450 3A4, 2D6, 2C9, 2C19, 2C8, and 1A2 by GAR-936.
42. e-CTD Original Application, 2.6.4, Section 5.2.2.
43. e-CTD Original Application, 2.7.2.3 – Summary of Clinical Pharmacology Studies, Section 1.3.
44. Nager C, Murphy AA. Antibiotics and oral contraceptive pills. *Seminars Reprod Endocrinol.* 1989;7(3):220-223.
45. e-CTD Original Application, 2.6.4, Section 4.4, Source Documentation: McDevitt J and Molinaro N. GAR-936: Placental transfer of [¹⁴C]-GAR-936 following a single bolus intravenous (3 mg/kg) administration to gravid Sprague-Dawley rats (protocol 96666). Wyeth RPT-47491, 2003.
46. e-CTD Original Application, 2.6.6, Section 6.2.2, Source Documentation: Minck DR, Thompson CA, Bechard SC, Curtin DA, Schubert HR. GAR-936: intravenous fertility and developmental toxicity dose ranging study in rats. Wyeth-Ayerst GTR-32617, 1999.
47. e-CTD Original Application, 2.6.6, Section 6.3.3, Source Documentation: Pinsonneault L, Tompson CA. GAR-936: intravenous injection fertility and embryo-fetal development study in the rat. Study conducted by ClinTrials BioResearch Ltd, Quebec, Canada. Wyeth-Ayerst RPT-42298, 2001.
48. e-CTD Original Application, 2.6.6 -Toxicology Written Summary, Section 9.1.
49. e-CTD Original Application, 2.6.6, Section 6.2.2, Source Documentation: Pinsonneault L, Tompson CA. GAR-936: intravenous injection fertility and embryo-fetal development study in the rat. Study conducted by ClinTrials BioResearch Ltd, Quebec, Canada. Wyeth-Ayerst RPT-42298, 2001.
50. e-CTD Original Application, 2.6.6, Section 6.3.3, Source Documentation: Pinsonneault L. GAR-936: intravenous injection teratology study in the rabbit. Study conducted by ClinTrials BioResearch, Quebec, Canada. Wyeth-Ayerst RPT-42304, 2001.
51. e-CTD Original Application, 2.4 – Non Clinical Written Summary, Section 8, Table 8.0-3.
52. e-CTD Original Application, 2.6.4, Section 4.5, Source Documentation: Wadgaonkar N, Molinaro N. GAR-936: Transfer of ¹⁴C-GAR-936 in breast milk of rats following a single 5 mg/kg IV dose (protocol 96664). Wyeth RPT-43753; 2003.
53. e-CTD, CAP/RP Efficacy Supplement, 2.7.4, Section 2.1.4, Table 2-5.
54. Justification Documents for Changes to Core Data Sheet – Feb-2006.
55. e-CTD, CAP/RP Efficacy Supplement, 2.7.4, Section 2.1.4, Table 2-5.
56. Justification for a safety labeling decision for Tigecycline: Hypoglycemia, pneumonia, healing abnormal, USPI ADR frequency modification, dated 24-Jan-2011.
57. Justification for a Safety Labeling Decision for Tygacil: Acute Pancreatitis, dated 03 November 2005.
58. Justification for a Safety Labeling Decision for Tigecycline: Jaundice, dated 31 May 2007.

59. Justification for a Safety Labeling Decision for Tigecycline: Cholestasis and Hepatic Dysfunction 05-Dec-2008.
60. Justification for a safety labeling decision for Tigecycline: Stevens-Johnson Syndrome, dated 23-Aug-2010.
61. Tigecycline Statistical Analysis of Mortality Data 26 August 2009.
62. e-CTD, CAP/RP Efficacy Supplement, 2.7.4, Section 2.1.5.4.
63. e-CTD, CAP/RP Efficacy Supplement, 2.7.4, Section 2.1.5.4, Table 2-17.
64. Biostatistical Analysis Provided on 15-Feb-2009.
65. Clinical Investigation of GAR-936 Protocol 3074A1-IES dated 12-Feb-2009.
66. e-CTD Original Application, 2.7.2.2, Section 1.1.1, Source Documentation: CSR-35495 - Muralidharan G, Minecci L, Micalizzi M, Mojaverian P. A single ascending dose study of the safety, tolerance, and pharmacokinetics of GAR-936 in healthy male subjects: final report (protocol 3074A1-100-EU).
67. e-CTD Original Application, 2.6.6, Section 2.0, Source Documentation: GTR-31861 - Wrenn JM, Thompson CA, Yegerman EM. GAR-936: acute intravenous toxicity study in rats.
68. e-CTD Original Application, 2.3.S.1 Drug Substance, Section 1.0.
69. e-CTD Original Application, 2.7.2.4 Special Studies, Section 1.2.
70. e-CTD Original Application, 2.7.2.4, Section 1.2.3, Source Documentation: Report 55622 - Ruzin A, Olsen MD. Inhibition of protein synthesis by tigecycline.
71. e-CTD Original Application, 2.7.2.4 – Summary of Clinical Pharmacology, Section 1.4.1.1.8.
72. e-CTD Original Application, 2.7.2.4, Section 1.1.3.3.1.
73. e-CTD Original Application, 2.7.3 – Summary of Clinical Efficacy, Complicated Intra-abdominal Infections, Section 1.
74. e-CTD Original Application, 2.7.3 – Summary of Clinical Efficacy, Complicated Skin and Skin Structure Infections, Section 1.
75. e-CTD Original Application, 2.7.2.4 – Special Studies, Section 1.1.3.1.2.
76. e-CTD Original Application, 2.7.2.4 – Special Studies, Section 1.1.3.2.2.
77. Petersen PJ, Jacobus NV, Weiss WJ, Sum PE, Testa RT. *In vitro* and *in vivo* antimicrobial activities of a novel glycylicline, the 9-t-butylglycylamido derivative of minocycline (GAR-936). *Antimicrob Agents Chemother* 1999;43(4):738-44.
78. e-CTD Original Application, 2.7.2.4 – Special Studies, Section 1.4.1.1.

79. e-CTD Original Application, 2.7.2.4, Section 1.7, Source Documentation: Petersen PJ, Bradford PA. The *in vitro* antibacterial activities of tigecycline (GAR-936) in combination with other antimicrobial agents as determined by microbroth checkerboarded methodology. Wyeth RPT- 53927.
80. e-CTD Original Application, 2.7.2.4, Section 1.5.2.2.1.
81. e-CTD Original Application, 5.3.5.4, Section 3, Source Documentation: Petersen PJ, Labthavikul P. Determination of the *in vitro* antibacterial activity of WAY 152,288 (7-(dimethylamino)-9-(pyrrolidino)-6-demethyl-6-deoxytetracycline) and CL346,635 (7-(dimethylamino)-9-(t-butylglycylamido)-6-demethyl-6-deoxytetracycline) by time-kill kinetics. Wyeth GRT 32011.
82. e-CTD Original Application, 2.7.2.4, Section 1.5.2.2.4.
83. e-CTD Original Application, 2.7.2.4, Section 1.5.2.2.3.
84. e-CTD, CAP/RP Efficacy Supplement, 2.7.2.4, Section 1.3.2.
85. e-CTD, CAP/RP Efficacy Supplement, 2.7.2.4, Section 1.5.2.2.
86. National Committee for Clinical Laboratory Standards. Methods for Dilution Antimicrobial Susceptibility Tests for Bacteria that Grow Aerobically – Sixth Edition. Approved Standard, NCCLS Document M7-A6, Vol. 23, No. 2. NCCLS, Wayne, PA. January 2003.
87. National Committee for Clinical Laboratory Standards. Methods for Antimicrobial Susceptibility Testing of Anaerobic Bacteria – Sixth Edition. Approved Standard, NCCLS Document M11-A6, Vol. 24, No. 2. NCCLS, Wayne, PA. January 2004.
88. National Committee for Clinical Laboratory Standards. Performance Standards for Antimicrobial Susceptibility Testing – Fourteenth Informational Supplement. Approved Standard, NCCLS Document M100-S14, Vol. 24, No.1. NCCLS, Wayne, PA. January 2004.
89. e-CTD Original Application, 2.7.2.4 – Special Studies, Section 1.1.1.
90. Justification Document: Special Studies, Breakpoint Justification.
91. National Committee for Clinical Laboratory Standards. Performance Standards for Antimicrobial Disk Susceptibility Tests – Eighth Edition. Approved Standard, NCCLS Document M2-A8, Vol. 23, No. 1. NCCLS, Wayne, PA. January 2003.
92. e-CTD Original Application, 2.7.2.4, Section 1.6.2.1, Source Documentation: Bradford PA, Labthavikul P. Assessment of drug concentrations to be used in disk diffusion susceptibility testing with GAR-936. Wyeth-Ayerst GTR-23596, 1997.
93. e-CTD Original Application, 2.7.2.4, Section 1.6.2.2, Source Documentation: Labthavikul P, Visalli M, Peterson PJ. Quality control and stability of disks and minimum inhibitory concentration (MIC) panels for susceptibility testing with tigecycline. Wyeth-Ayerst RPT-43201, 2001.
94. e-CTD, CAP/RP Efficacy Supplement, 2.7.2.4, Section 4.2.1, Table 4-2.
95. e-CTD Original Application, 2.7.2.4, Section 1.6.3.4.
96. e-CTD, CAP/RP Efficacy Supplement, 2.7.2.4 Section 1.6.3, Table 1-43.

97. e-CTD Original Application, 2.7.2.4, Section 1.1.3.1.
98. e-CTD Original Application, 2.7.2.4, Section 1.1.3.2.
99. e-CTD Original Application, 2.7.2.4, Section 1.1.3.3.
100. e-CTD Original Application, 2.7.2.4, Section 1.1.2.2.
101. e-CTD, CAP/RP Efficacy Supplement, 2.7.3, Complicated Skin and Skin Structure Infections Addendum, Section 5.0, Table 5-1.
102. e-CTD, CAP/RP Efficacy Supplement, 2.7.3, Complicated Skin and Skin Structure Infections Addendum, Section 6.0.
104. e-CTD Original Application, 2.7.3 – Summary of Clinical Efficacy, Complicated Skin and Skin Structure Infections, Section 3.1.2, Table 3.1.2-2.
105. e-CTD Original Application, 2.7.3 – Summary of Clinical Efficacy, Complicated Skin and Skin Structure Infections, Section 3.2.1.
106. e-CTD Original Application, 2.7.3 – Summary of Clinical Efficacy, Complicated Skin and Skin Structure Infections, Section 3.2.1, Table 3.2.1-1.
107. e-CTD Original Application, 2.7.3 - Summary of Clinical Efficacy, Complicated Skin and Skin Structure Infections, Section 3.2.1, Table 3.2.1-2.
108. e-CTD, CAP/RP Efficacy Supplement, 2.7.3, Complicated Skin and Skin Structure Infections Addendum, Section 2.3.1.1, Table 2-19.
109. e-CTD Original Application, 2.7.3 – Complicated Intra-abdominal Infections, Section 3.1.2, Table 3.1.2-3.-Clinical Diagnosis of Infections within the CE population: Number of Subjects. Pooled data for Studies 301 and 306.
110. e-CTD Original Application, 2.7.3 – Summary of Clinical Efficacy, Complicated Intra-abdominal Infections, Section 3.2.1.
111. e-CTD Original Application, 2.7.3 – Summary of Clinical Efficacy, Complicated Intra-abdominal Infections, Section 3.2.1, Table 3.2.1-1.
112. e-CTD Original Application, 2.7.3 – Summary of Clinical Efficacy, Complicated Intra-abdominal Infections, Section 3.2.1, Table 3.2.1-2.
113. e-CTD, CAP/RP Efficacy Supplement, 2.7.3, Complicated Intra-abdominal Infections Addendum, Section 5.0, Table 5-1.
114. e-CTD, CAP/RP Efficacy Supplement, 2.7.3, Community-Acquired Pneumonia, Section 1.1.1, Table 1-2.
115. e-CTD, CAP/RP Efficacy Supplement, 2.7.3, Community-Acquired Pneumonia, Section 3.2.1, Table 3-15.

116. e-CTD, CAP/RP Efficacy Supplement, 2.7.3, Community-Acquired Pneumonia, Section 3.2.1, Table 3-16.
117. e-CTD, CAP/RP Efficacy Supplement, 2.7.3, Community-Acquired Pneumonia, Section 2.1, Table 2-6.
118. e-CTD, CAP/RP Efficacy Supplement, 2.7.3, Community-Acquired Pneumonia, Section 2.1, Table 2-7.
119. e-CTD, CAP/RP Efficacy Supplement, 2.7.3, Community-Acquired Pneumonia, Section 3.2.4, Table 3-27.
120. e-CTD, CAP/RP Efficacy Supplement, 5.3.5.1, CSR-64092, Section 8.2, Table 8.2-1.
121. e-CTD, CAP/RP Efficacy Supplement, 5.3.5.1, CSR-64092, Section 8.2, Table 8.2-2.
122. e-CTD, CAP/RP Efficacy Supplement, 5.3.5.1, CSR-64092, Section 6.1.
123. e-CTD, CAP/RP Efficacy Supplement, 5.3.5.1, CSR-64092, Section 6.4.1.
124. e-CTD, CAP/RP Efficacy Supplement, 5.3.5.1, CSR-64092, Section 9.4.1, Table 9.4.1-1.
125. e-CTD, CAP/RP Efficacy Supplement, 5.3.5.1, CSR-64092, Section 15.0, ST 9-6.
126. e-CTD, CAP/RP Efficacy Supplement, 5.3.5.1, CSR-64092, Section 9.4.1, Table 9.4.1-3.
127. e-CTD, CAP/RP Efficacy Supplement, 5.3.5.1, CSR-64092, Section 15.0, ST 9-8.
128. e-CTD, CAP/RP Efficacy Supplement, 5.3.5.1, CSR-64092, Section 9.4.1, Table 9.4.1-2.
129. e-CTD, CAP/RP Efficacy Supplement, 5.3.5.1, CSR-64092, Section 15.0, ST 9-7.
130. e-CTD, CAP/RP Efficacy Supplement, 5.3.5.1, CSR-64092, Section 9.4.1, Table 9.4.1-4.
132. e-CTD, CAP/RP Efficacy Supplement, 5.3.5.2, CSR-64080, Section 8.2, Table 8.2-2.
133. e-CTD, CAP/RP Efficacy Supplement, 5.3.5.2, CSR-64080, Section 6.1.
134. e-CTD, CAP/RP Efficacy Supplement, 5.3.5.2, CSR-64080, Section 6.4.1.
135. e-CTD, CAP/RP Efficacy Supplement, 5.3.5.2, CSR-64080, Section 6.5.2.1.
136. e-CTD, CAP/RP Efficacy Supplement, 5.3.5.3, CSR-64080, Section 9.4.2.1.1, Table 9.4.2.1.1-5.
137. e-CTD, CAP/RP Efficacy Supplement, 5.3.5.3, CSR-64080, Section 9.4.2.1.1, Table 9.4.2.1.1-6.
138. e-CTD, CAP/RP Efficacy Supplement, 5.3.5.3, CSR-64080, Section 9.4.2.4.1.
139. e-CTD, CAP/RP Efficacy Supplement, 5.3.5.3, CSR-66163, Section 3.0.
140. e-CTD Original Application, 2.7.2.3 – Summary of Clinical Pharmacology, Section 1, Table 1-2.
141. e-CTD Original Application, 2.7.2.3 – Summary of Clinical Pharmacology, Section 1, Table 1-1.

142. e-CTD Original Application, 2.7.2.3 – Summary of Clinical Pharmacology. Comparison and Analysis of Results Across Studies, Section 1.1.
143. e-CTD Original Application, 2.6.4, Section 4.3, Source Documentation: GTR-37511 - Jamil A. ¹⁴C GAR-936: *in vitro* protein binding in mouse, rat, rabbit, dog and human plasma.
144. e-CTD Original Application, 2.7.2.3, Section 1.2, Source Documentation: RPT 53963 - McDevitt, J. Tigecycline: *in vitro* protein binding of ¹⁴C-tigecycline in mouse, rat, rabbit, and human plasma using ultracentrifugation, 2004.
145. e-CTD Original Application, 2.7.2.3, Section 1.2, Source Documentation: CSR-35495 - Muralidharan G, Minecci L, Micalizzi M, Mojaverian P. A single ascending dose study of the safety, tolerance, and pharmacokinetics of GAR-936 in healthy male subjects: final report (protocol 3074A1-100-EU).
146. e-CTD Original Application, 2.4, Section 4.3, Source Documentation: CSR-39534 - Muralidharan G, Minecci L, Micalizzi M, Mojaverian P. A double-blind, randomized, placebo-controlled, ascending multiple dose study to assess the safety, tolerability and pharmacokinetics of GAR-936 in healthy male subjects: final report (protocol 3074A1-101-US).
147. e-CTD Original Application, 2.6.4 – Pharmacokinetics Written Summary Section 4.1.
148. e-CTD Original Application, 2.7.2.3 – Summary of Clinical Pharmacology, Section 1.2.
149. e-CTD Original Application, 2.7.2.3, Section 1.2, Source Documentation: CSR-53846 - Troy SM, Kennedy AM, Harper D. A study of the steady-state intrapulmonary pharmacokinetics of tigecycline in healthy adults: final report (protocol 3074A1-112-US).
150. e-CTD Original Application, 5.3.3.1, Section 13.2, Table ST 8-1, Source Documentation: Gotfried M. An open-label evaluation of tigecycline concentrations in selected tissues. (Interim report). Protocol 3074A1, Wyeth CSR-53582, dated September 8, 2004.
151. e-CTD seq No 0074, 5.3.3.1, stf-Study-3074a1-117, ICH, Study Report Body, CSR-59619, Section 13.0, ST 8-21.
152. e-CTD seq No 0074, 5.3.3.1, stf-Study-3074a1-117, ICH, Study Report Body, CSR-59619, Section 13.0, ST 8-9.
153. e-CTD Original Application, 2.6.4, Section 5.2.1, Source Documentation: RPT-42931 - Hoffman M and DeMaio W. GAR-936 (WAY-156936): *In vitro* metabolism of GAR-936 in cryopreserved human hepatocytes, human liver slices, and liver microsomes of Sprague-Dawley rats, beagle dogs and humans.
154. e-CTD Original Application, 2.7.2.3, Section 5.1.3, Source Documentation: CSR-52364 - Troy SM, Hoffman M, Kennedy AM, Harper D. A metabolic disposition and mass balance study of ¹⁴C-labeled intravenous tigecycline in healthy men: final report (protocol 3074A1-104-US).
155. e-CTD Original Application, 5.3.3.1, Section 10, Source Documentation: RPT-53091 - Hoffmann M, Di Maio W, Moore R. Tigecycline: Metabolic Characterization of Human Serum, Urine, and Fecal samples from protocol 3074A-104-US: A Metabolic Disposition and Mass Balance Study of ¹⁴C-labeled intravenous tigecycline in Healthy Men.

156. e-CTD Original Application, 2.7.2.3, Section 1.4, Source Documentation: CSR-52364 - Troy SM, Hoffman M, Kennedy AM, Harper D. A metabolic disposition and mass balance study of ¹⁴C-labeled intravenous tigecycline in healthy men: final report (protocol 3074A1-104-US).
157. e-CTD Original Application, 5.3.3.3, Section 8.1, table 8.1-1, Source Documentation: CSR-52364 - Troy SM, Hoffmann M, Horstman R, Harper D. A Metabolic Disposition and Mass Balance Study of ¹⁴C-labeled intravenous tigecycline in healthy men: Final Study Report, Wyeth protocol 3074A1-104-US.
158. e-CTD Original Application, 2.7.2.3 – Summary of Clinical Pharmacology, Section 1.8.6.
159. e-CTD Original Application, 5.3.3.3, Section 7.2, Table 7.2A, Source Documentation: CSR-41557 - Troy SM, Kennedy AM, Micalizzi M. The effect of age and gender on the safety, tolerability, and pharmacokinetics of tigecycline in healthy subjects (protocol 3074A1-102-US).
160. e-CTD Original Application, 5.3.3.3 – Reports of Human Pharmacokinetics for PK Studies, Section 10.1.
161. e-CTD Original Application, 2.7.2.3 – Summary of Clinical Efficacy, Section 1.8.1.
162. e-CTD Original Application, 2.7.2.3, Section 1.8.2, Source Documentation: CSR-41557 - Troy SM, Kennedy AM, Micalizzi M. The Effects of Age and Gender on the Safety, Tolerability, and Pharmacokinetics of GAR-936 in Healthy Subjects. Wyeth protocol 3074A1-102-US.
163. e-CTD Original Application, 2.7.2.3 – Summary of Clinical Pharmacology, Section 1.8.4.
164. e-CTD Original Application, 2.6.6 – Toxicology Written Summary, Section 5.0.
165. e-CTD Original Application, 2.6.6, Section 4.1.3, Source Documentation: GTR-32066 - Murli H. Mutagenicity test on GAR-936 measuring chromosomal aberrations in Chinese hamster ovary (CHO) cells with a confirmatory assay with multiple harvests. Study conducted by Covance Laboratories Inc., Vienna, VA.
166. e-CTD Original Application, 2.6.6, Section 4.1.1, Source Documentation: GTR-32202 - Cifone MA. Mutagenicity test on GAR-936 in the CHO HGPRT forward mutation assay with a confirmatory assay. Study conducted by Covance Laboratories Inc., Vienna, VA.
167. e-CTD Original Application, 2.6.6, Section 4.1.2, Source Documentation: GTR-31695 - Cifone MA. Mutagenicity test in CLX346635 in the L5178Y TK^{+/+} mouse lymphoma forward mutation assay. Study conducted by Covance Laboratories Inc., Vienna, VA.
168. e-CTD Original Application, 2.6.6 – Toxicology Written Summary Section 4.2.1, Source Documentation: GTR-31896 - Curry PT. Mutagenicity test on GAR-936 in the *in vivo* mouse micronucleus assay.
169. e-CTD Original Application, 2.6.6 – Toxicology Written Summary, Section 6.2.2 – Fertility and developmental.
170. e-CTD Original Application, 2.6.6 – Toxicology Written Summary, Section 3.1.2.
171. e-CTD Original Application, 2.6.6 – Toxicology Written Summary, Section 3.2.2.

172. e-CTD Original Application, 2.6.7 – Toxicology Tabulated Summary, Table 7.1.
173. e-CTD Original Application, 2.6.7 – Toxicology Tabulated Summary, Table 7.4.
174. e-CTD Original Application, 2.6.6 – Toxicology Written Summary, Section 3.1.3 Two Week Study in Rats with Three Week Recovery IV.
175. e-CTD Original Application, 2.6.6 – Toxicology Written Summary, Section 3.2.3 Two Week Study in Dogs With a Three Week Recovery IV.
176. e-CTD Original Application, 2.6.6 – Toxicology Written Summary , Section 3.1.5 Thirteen Week Study in Rats IV.
177. e-CTD Original Application, 2.6.6 – Toxicology Written Summary, Section 3.2.2 Two Week Study in Dogs IV.
178. e-CTD Original Application, 2.6.7 – Toxicology Tabulated Summary, Table 7.3 Repeat Dose toxicity Study: Thirteen Weeks in Rats IV.
179. e-CTD Original Application, 2.6.7 – Toxicology Tabulated Summary, Table 7.4 Repeat Dose Toxicity: Two Weeks in Dogs IV.
180. e-CTD Original Application, 2.6.6 – Toxicology Written Summary, Section 8.3 Phototoxicity Assessment in Dogs.
181. RPT-70624: Admixture Compatibility Evaluation of Reformulated Tygacil (50 mg/Vial) at 50 mg or 100 mg Dose With Lactated Ringer’s Injection.
182. RPT-62363: Simulated Y-Site Compatibility Testing of Tigecycline Intravenous Solutions with Various Intravenous Diluents and Drugs Using Physical Techniques.
183. RPT-62680: Y-Site Chemical Compatibility Testing of Reformulated Tygacil IV Admixture with Various Drugs and Diluents.
184. RPT-72160: Y-Site Chemical Compatibility Testing of 1 mg/mL Reformulated Tygacil (Tygacil Lactose formulation) Solutions in 5% Dextrose Injection, USP with Various Drugs.
185. RPT-74976 Y-Site Physical and Chemical Compatibility Testing of 1 mg/mL Tygacil (Lactose Formulation) Solutions in 0.9% Sodium Chloride Injection, USP and 5% Dextrose Injection, USP with Esomeprazole Sodium Injection and Metoclopramide Injection, August 2008.
186. e-CTD Original Application, 2.3.P.8, Section 3.0.
187. RPT 62677: Admixture Compatibility Evaluation of 9-Month Room Temperature Samples for Reformulated Tygacil (50 mg/Vial) at 50 mg and 100 mg Dose.
188. RPT 61403: Admixture Compatibility Evaluation of 3 to 5-Month Room Temperature Samples for Reformulated Tygacil (50 mg/Vial) at 50 mg and 100 mg Dose.
189. RPT-69887: Admixture Compatibility Evaluation of 24-Month Room Temperature Samples for Reformulated Tygacil (50 mg/vial) at 50 mg and 100 mg Dose.

190. e-CTD Original Application, 2.3.P.2 - Description and Composition of the Drug Product, Section 1.0.
191. 2.5 Clinical Overview for Tigecycline: Thrombocytopenia, Dec-2011.
192. 2.5 Clinical Overview for Tigecycline: Indication, QTc, and Pediatric Information, Feb-2014.
193. 2.5 Clinical Overview for Tigecycline: To Support Core Data Sheet Changes – Pediatric Indication, Nov-2015.
194. 2.5 Clinical Overview for Tigecycline: To Support Updates to Section 4.4 Special warnings and precautions for use and Section 4.8 Undesirable effects of the Core Data Sheet, Hypofibrinogenaemia, November 2019.
195. 2.5 Clinical Overview for Tigecycline: To Support Updates to Section 4.5 Interaction with other medicinal products and other forms of interaction of the Core Data Sheet, November 2019.
196. Adverse Drug Reaction Frequency Justification Document Tigecycline (TYGACIL®), November 2019.
197. 2020-11 PF-05208753 (tigecycline) Targeted content 2.4 Nonclinical Overview for Core Data Sheet (CDS) update, November 2020.