

Aminosyn™ II

AN AMINO ACID INJECTION, Sulfite-Free

Pharmacy Bulk Package — Not For Direct Infusion.

Flexible Plastic Container

Rx only

DESCRIPTION

Aminosyn™ II, Sulfite-Free, (an amino acid injection) is a sterile, nonpyrogenic solution for intravenous infusion. Aminosyn II is oxygen sensitive. The Pharmacy Bulk Package is a sterile dosage form which contains multiple single doses for use only in a pharmacy bulk admixture program. The formulations are described below:

Essential Amino Acids (mg/100 mL)	Aminosyn II	
	10%	15%
Isoleucine	660	990
Leucine	1000	1500
Lysine (acetate)*	1050	1575
Methionine	172	258
Phenylalanine	298	447
Threonine	400	600
Tryptophan	200	300
Valine	500	750

*Amount cited is for lysine alone and does not include the acetate.

Nonessential Amino Acids (mg/100 mL)

Alanine	993	1490
Arginine	1018	1527
L-Aspartic Acid	700	1050
L-Glutamic Acid	738	1107
Histidine	300	450
Proline	722	1083
Serine	530	795
N-Acetyl-L-Tyrosine	270	405
Glycine	500	750

Other Characteristics

Protein Equivalent	(approx. grams/liter)	100	150
Total Nitrogen	(grams/liter)	15.3	23.0
Osmolarity	(mOsmol/liter, actual)	840	1270
pH ^a		5.8 (5.0 – 6.5)	5.8 (5.0 – 6.5)
Specific Gravity		1.03	1.05
Electrolytes (mEq/L)			
Sodium	(Na ⁺) ^b	38	50
Acetate	(C ₂ H ₃ O ₂) ^c	71.8	107.6

^a Solution contains sodium hydroxide for pH adjustment.

^b Figure includes Na⁺ from the pH adjustor.

^c Includes acetate from lysine acetate.

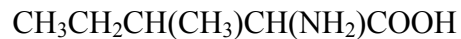
The flexible plastic container is fabricated from a specially formulated polyvinylchloride. Water can permeate from inside the container into the overwrap but not in amounts to affect the solution significantly. Solutions in contact with the plastic container may leach out certain chemical components from the plastic in very small amounts; however, biological testing was supportive of the safety of the plastic container materials.

Exposure to temperatures above 25°C/77°F during transport and storage will lead to minor losses in moisture content. Higher temperatures lead to greater losses. It is unlikely that these minor losses will lead to clinically significant changes within the expiration period.

The formulas for the individual amino acids are as follows:

Essential Amino Acids

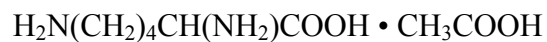
Isoleucine



Leucine



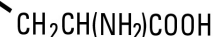
Lysine Acetate



Methionine



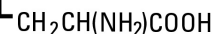
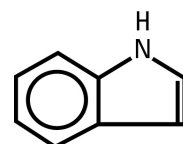
Phenylalanine



Threonine



Tryptophan



Valine

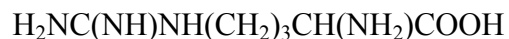


Nonessential Amino Acids

Alanine



Arginine



L-Aspartic Acid



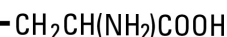
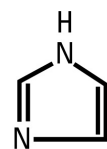
L-Glutamic Acid



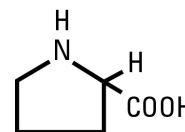
Glycine



Histidine



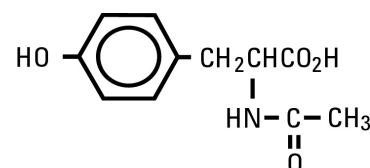
Proline



Serine



N-Acetyl-L-Tyrosine



The Pharmacy Bulk Package is designed for use with manual, gravity flow operations and automated compounding devices for preparing sterile parenteral nutrient admixtures; it contains no bacteriostat. Multiple single doses may be dispensed during continual aliquoting operations. Withdrawal of container contents should be promptly completed within 4 hours after initial closure puncture.

CLINICAL PHARMACOLOGY

Aminosyn II, Sulfite-Free, (an amino acid injection) provides crystalline amino acids to promote protein synthesis and wound healing, and to reduce the rate of endogenous protein catabolism. Aminosyn II, given by central venous infusion in combination with concentrated dextrose, electrolytes, vitamins, trace metals, and ancillary fat supplements, constitutes total parenteral nutrition (TPN). Aminosyn II can also be administered by peripheral vein with dextrose and maintenance electrolytes. Intravenous fat emulsion may be substituted for part of the carbohydrate calories during either TPN or peripheral vein administration of Aminosyn II.

INDICATIONS AND USAGE

Aminosyn II, Sulfite-Free, (an amino acid injection) infused with dextrose by peripheral vein infusion is indicated as a source of nitrogen in the nutritional support of patients with adequate stores of body fat, in whom, for short periods of time, oral nutrition cannot be tolerated, is undesirable, or inadequate.

SUPPLEMENTAL ELECTROLYTES, IN ACCORDANCE WITH THE PRESCRIPTION OF THE ATTENDING PHYSICIAN, MUST BE ADDED TO AMINOSYN II SOLUTIONS WITHOUT ELECTROLYTES.

Aminosyn II can be administered peripherally with dilute (5 to 10%) dextrose solution and I.V. fat emulsion as a source of nutritional support. This form of nutritional support can help to preserve protein and reduce catabolism in stress conditions where oral intake is inadequate.

Aminosyn II is also indicated for central vein infusion to prevent or reverse negative nitrogen balance in patients where the alimentary tract, by the oral, gastrostomy or jejunostomy route cannot or should not be used and gastrointestinal absorption of protein is impaired.

CONTRAINDICATIONS

This preparation should not be used in patients with hepatic coma or metabolic disorders involving impaired nitrogen utilization.

WARNINGS

Intravenous infusion of amino acids may induce a rise in blood urea nitrogen (BUN), especially in patients with impaired hepatic or renal function. Appropriate laboratory tests should be performed periodically and infusion discontinued if BUN levels exceed normal postprandial limits and continue to rise. It should be noted that a modest rise in BUN normally occurs as a result of increased protein intake.

Administration of amino acid solutions to a patient with hepatic insufficiency may result in serum amino acid imbalances, metabolic alkalosis, prerenal azotemia, hyperammonemia, stupor and coma.

Administration of amino acid solutions in the presence of impaired renal function may augment an increasing BUN, as does any protein dietary component.

Solutions containing sodium ion should be used with great care, if at all, in patients with congestive heart failure, severe renal insufficiency and in clinical states in which there exists edema with sodium retention.

Solutions which contain potassium ion should be used with great care, if at all, in patients with hyperkalemia, severe renal failure and in conditions in which potassium retention is present.

Solutions containing acetate ion should be used with great care in patients with metabolic or respiratory alkalosis. Acetate should be administered with great care in those conditions in which there is an increased level or an impaired utilization of this ion, such as severe hepatic insufficiency.

Hyperammonemia is of special significance in infants, as it can result in mental retardation. Therefore, it is essential that blood ammonia levels be measured frequently in infants.

Instances of asymptomatic hyperammonemia have been reported in patients without overt liver dysfunction. The mechanisms of this reaction are not clearly defined, but may involve genetic defects and immature or subclinically impaired liver function.

WARNING: This product contains aluminum that may be toxic. Aluminum may reach toxic levels with prolonged parenteral administration if kidney function is impaired. Premature neonates are particularly at risk because their kidneys are immature, and they require large amounts of calcium and phosphate solutions, which contain aluminum.

Research indicates that patients with impaired kidney function, including premature neonates, who receive parenteral levels of aluminum at greater than 4 to 5 mcg/kg/day accumulate aluminum at levels associated with central nervous system and bone toxicity. Tissue loading may occur even at lower rates of administration.

PRECAUTIONS

Special care must be taken when administering glucose to provide calories in diabetic or prediabetic patients.

Feeding regimens which include amino acids should be used with caution in patients with history of renal disease, pulmonary disease, or with cardiac insufficiency so as to avoid excessive fluid accumulation.

The effect of infusion of amino acids, without dextrose, upon carbohydrate metabolism of children is not known at this time.

Nitrogen intake should be carefully monitored in patients with impaired renal function.

For long-term total nutrition, or if a patient has inadequate fat stores, it is essential to provide adequate exogenous calories concurrently with the amino acids. Concentrated dextrose solutions are an effective source of such calories. Such strongly hypertonic nutrient solutions should be administered through an indwelling intravenous catheter with the tip located in the superior vena cava.

<p style="text-align: center;">SPECIAL PRECAUTIONS FOR CENTRAL VENOUS INFUSIONS ADMINISTRATION BY CENTRAL VENOUS CATHETER SHOULD BE USED ONLY BY THOSE FAMILIAR WITH THIS TECHNIQUE AND ITS COMPLICATIONS.</p>

Central vein infusion (with added concentrated carbohydrate solutions) of amino acid solutions requires a knowledge of nutrition as well as clinical expertise in recognition and treatment of complications. Attention must be given to solution preparation, administration and patient monitoring. IT IS ESSENTIAL THAT A CAREFULLY PREPARED PROTOCOL BASED ON CURRENT MEDICAL PRACTICES BE FOLLOWED, PREFERABLY BY AN EXPERIENCED TEAM.

SUMMARY HIGHLIGHTS OF COMPLICATIONS (consult current medical literature).

1. Technical:

The placement of a central venous catheter should be regarded as a surgical procedure. One should be fully acquainted with various techniques of catheter insertion. For details of technique and placement sites, consult the medical literature. X-ray is the best means of verifying catheter placement. Complications known to occur from the placement of central venous catheters are pneumothorax, hemothorax, hydrothorax, artery puncture and transection, injury to the brachial plexus, malposition of the catheter, formation of arteriovenous fistula, phlebitis, thrombosis and air and catheter emboli.

2. Septic:

The constant risk of sepsis is present during administration of total parenteral nutrition. It is imperative that the preparation of the solution and the placement and care of catheters be accomplished under strict aseptic conditions.

Solutions should ideally be prepared in the hospital pharmacy in a laminar flow hood using careful aseptic technique to avoid inadvertent touch contamination. Solutions should be used promptly after mixing. Storage should be under refrigeration and limited to a brief period of time, preferably less than 24 hours.

Administration time for a single container and set should never exceed 24 hours.

3. **Metabolic:**

The following metabolic complications have been reported with TPN administration: metabolic acidosis and alkalosis, hypophosphatemia, hypocalcemia, osteoporosis, glycosuria, hyperglycemia, hyperosmolar nonketotic states and dehydration, rebound hypoglycemia, osmotic diuresis and dehydration, elevated liver enzymes, hypo- and hypervitaminosis, electrolyte imbalances and hyperammonemia in pediatric patients. Frequent evaluations are necessary especially during the first few days of therapy to prevent or minimize these complications.

Administration of glucose at a rate exceeding the patient's utilization rate may lead to hyperglycemia, coma and death.

Carcinogenesis, Mutagenesis, Impairment of Fertility: Studies with solutions from flexible plastic containers have not been performed to evaluate carcinogenic potential, mutagenic potential or effects on fertility.

Pregnancy Category C. Animal reproduction studies have not been conducted with Aminosyn II (an amino acid injection). It is not known whether Aminosyn II can cause fetal harm when administered to a pregnant woman or can affect reproduction capacity. Aminosyn II should be given to a pregnant woman only if clearly needed.

Nursing Mothers: Caution should be exercised when solutions from flexible plastic containers are administered to a nursing mother.

Geriatric Use: Clinical Studies of Aminosyn II have not been performed to determine whether patients over 65 years of age respond differently from younger subjects. Other reported clinical experience has not identified differences in responses between elderly and younger patients. In general, dose selection for an elderly patient should be cautious, reflecting the greater frequency of decreased hepatic, renal, or cardiac function, and of concomitant disease or other drug therapy. This drug is known to be substantially excreted by kidney, and the risk for adverse reactions to this drug may be greater in patients with impaired renal function. Because elderly patients are more likely to have decreased renal function, care should be taken in dose selection, and it may be useful to monitor renal function.

Pediatric Use: Safety and effectiveness of solutions from flexible plastic containers in pediatric patients have not been well established.

CLINICAL EVALUATION AND LABORATORY DETERMINATIONS, AT THE DISCRETION OF THE ATTENDING PHYSICIAN, ARE NECESSARY FOR PROPER MONITORING DURING ADMINISTRATION. Do not withdraw venous blood for blood chemistries through the peripheral infusion site, as interference with estimations of nitrogen containing substances may occur. Blood studies should include glucose, urea nitrogen, serum electrolytes, ammonia, cholesterol, acid-base balance, serum proteins, kidney and liver function tests, osmolarity and hemogram. White blood count and blood cultures are to be determined if indicated. Urinary osmolality and glucose should be determined as necessary.

Drug Interactions

Because of its antianabolic activity, concurrent administration of tetracycline may reduce the potential effects of amino acids infused with dextrose as part of a parenteral feeding regimen.

ADVERSE REACTIONS

Peripheral Infusions

A 3.5% to 5% solution of amino acids (without additives) is slightly hypertonic. Use of large peripheral veins, inline filters, and slowing the rate of infusion may reduce the incidence of local venous irritation.

Electrolyte additives should be spread throughout the day. Irritating additive medications may need to be infused at another venous site.

Generalized flushing, fever and nausea also have been reported during peripheral infusions of amino acid solutions.

OVERDOSAGE

In the event of overhydration or solute overload, re-evaluate the patient and institute appropriate corrective measures. (See **WARNINGS** and **PRECAUTIONS**.)

DOSAGE AND ADMINISTRATION

Each 100 mL of Aminosyn II contains:

	<u>Amino Acids</u>	<u>Nitrogen</u>
Aminosyn II 10%	10 g	1.53 g
Aminosyn II 15%	15 g	2.30 g

The total daily dose of the solution depends on the daily protein requirements and on the patient's metabolic and clinical response. In many patients, provision of adequate calories in the form of hypertonic dextrose may require the administration of exogenous insulin to prevent hyperglycemia and glycosuria. To prevent rebound hypoglycemia, a solution containing 5% dextrose should be administered when hypertonic dextrose infusions are abruptly discontinued.

Parenteral drug products should be inspected visually for particulate matter and discoloration prior to administration, whenever solution and container permit. **COLOR VARIATION FROM PALE YELLOW TO YELLOW IS NORMAL AND DOES NOT ALTER EFFICACY.**

Some opacity of the plastic due to moisture absorption during the sterilization process may be observed. This is normal and does not affect the solution quality or safety. The opacity will diminish gradually.

Aminosyn II in the 2000 mL flexible Pharmacy Bulk Package is designed for use with manual, gravity flow operations and automated gravimetric compounding devices for preparing intravenous nutritional admixtures. Admixtures must be stored under refrigeration and used within 24 hours of admixing.

1. Peripheral Vein Nutritional Maintenance

A mixture of Aminosyn II and dextrose diluted to a final concentration of 5% to 10% amino acids and 5% to 10% dextrose is suitable for administration by peripheral vein. This solution is not intended for central vein administration because it does not contain adequate amounts of amino acids or electrolytes.

For peripheral intravenous infusion, 1 to 1.5 g/kg/day of total amino acids will reduce protein catabolism. Infusion or ingestion of carbohydrate or lipid will not reduce the nitrogen sparing effect of intravenous amino acid infusions at this dose.

As with all intravenous fluid therapy, the primary aim is to provide sufficient water to compensate for insensible, urinary and other (nasogastric suction, fistula drainage, diarrhea) fluid losses. Total fluid requirements, as well as electrolyte and acid-base needs, should be estimated and appropriately administered.

For an amino acid solution of specified total concentration, the volume required to meet amino acid requirements per 24 hours can be calculated. After making an estimate of the total daily fluid (water) requirement, the balance of fluid needed beyond the volume of amino acid solution required can be provided either as a noncarbohydrate or a carbohydrate-containing electrolyte solution. I.V. lipid emulsion may be substituted for part of the carbohydrate-containing solution. Vitamins and additional electrolytes as needed for maintenance or to correct imbalances may be added to the amino acid solution.

If desired, only one-half of an estimated daily amino acid requirement of 1.5 g/kg can be given on the first day. Amino acids together with dextrose in concentrations of 5% to 10% infused into a

peripheral vein can be continued while oral nutrition is impaired. However, if a patient is unable to take oral nourishment for a prolonged period of time, institution of total parenteral nutrition with exogenous calories should be considered.

2. Central Vein Total Parenteral Nutrition

For central vein infusion with concentrated dextrose solution, alone or with I.V. lipid, the total daily dose of the amino acid solution depends upon daily protein requirements and the patient's metabolic and clinical response. The determination of nitrogen balance and accurate daily body weights, corrected for fluid balance, are probably the best means of assessing individual protein requirements.

ADULTS

Solutions containing 3.5 to 5% amino acids with 5 to 10% glucose may be infused with a fat emulsion by peripheral vein to provide approximately 1400 to 2000 kcal/day. Fat emulsion administration should be considered when prolonged parenteral nutrition is required in order to prevent essential fatty acid deficiency (E.F.A.D.). Serum lipids should be monitored for evidence of E.F.A.D. in patients maintained on fat-free TPN.

Aminosyn II solution should only be infused via a central vein when admixed with sufficient dextrose to provide full caloric requirements in patients who require prolonged total parenteral nutrition. I.V. lipid may be administered to provide part of the calories, if desired. Serum lipids should be monitored for evidence of essential fatty acid deficiency in patients maintained on fat-free TPN.

Total parenteral nutrition (TPN) may be started with 10% dextrose added to the calculated daily requirement of amino acids (1.5 g/kg for a metabolically stable patient). Dextrose content is gradually increased over the next few days to the estimated daily caloric need as the patient adapts to the increasing amounts of dextrose. Each gram of dextrose provides approximately 3.4 kcal. Each gram of fat provides 9 kcal.

The average depleted major surgical patient with complications requires between 2500 and 4000 kcal and between 12 and 24 grams of nitrogen per day. An adult patient in an acceptable weight range with restricted activity who is not hypermetabolic, requires about 30 kcal/kg of body weight/day. Average daily adult fluid requirements are between 2500 and 3000 mL and may be much higher with losses from fistula drainage or severe burns. Typically, a hospitalized patient may lose 12 to 18 grams of nitrogen a day, and in severe trauma the daily loss may be 20 to 25 grams or more.

Aminosyn II solutions without electrolytes are intended for patients requiring individualized electrolyte therapy. Sodium, chloride, potassium, phosphate, calcium and magnesium are major electrolytes which should be added to Aminosyn II as required.

SERUM ELECTROLYTES SHOULD BE MONITORED AS INDICATED. Electrolytes may be added to the nutrient solution as indicated by the patient's clinical condition and laboratory determinations of plasma values. Major electrolytes are sodium, chloride, potassium, phosphate, magnesium and calcium. Vitamins, including folic acid and vitamin K, are required additives. The trace element supplements should be given when long-term parenteral nutrition is undertaken.

Iron is added to the solution or given intramuscularly in depot form as indicated. Vitamin B₁₂, vitamin K and folic acid are given intramuscularly or added to the solution as desired.

Calcium and phosphorus additives are potentially incompatible when added to the TPN admixture.

In patients with hyperchloremic or other metabolic acidosis, sodium and potassium may be added as the acetate or lactate salts to provide bicarbonate alternates.

In adults, hypertonic mixtures of amino acids and dextrose may be safely administered by continuous infusion through a central venous catheter with the tip located in the vena cava. Typically, each liter of central vein TPN solution for adults contains 42.5 to 50 g of Aminosyn II with approximately 250 ± 100 g of dextrose; supplementary nonprotein calories from intravenous fat emulsion may be prescribed, at the discretion of the physician.

The rate of intravenous infusion initially should be 2 mL/min and may be increased gradually. If administration should fall behind schedule, no attempt to “catch up” to planned intake should be made. In addition to meeting protein needs, the rate of administration is governed by the patient’s glucose tolerance estimated by glucose levels in blood and urine.

Aminosyn II solution, when mixed with an appropriate volume of concentrated dextrose, offers a higher concentration of calories and nitrogen per unit volume. This solution is indicated for patients requiring larger amounts of nitrogen than could otherwise be provided or where total fluid load must be kept to a minimum, for example, patients with renal failure.

Provision of adequate calories in the form of hypertonic dextrose may require exogenous insulin to prevent hyperglycemia and glycosuria. To prevent rebound hypoglycemia, do not abruptly discontinue administration of nutritional solutions.

PEDIATRIC

Pediatric requirements for parenteral nutrition are constrained by the greater relative fluid requirements of the infant and greater caloric requirements per kilogram. Amino acids are probably best administered in a 2.5% concentration. For most pediatric patients on intravenous nutrition, 2.5 grams amino acids/kg/day with dextrose alone or with I.V. lipid calories of 100 to 130 kcal/kg/day is recommended. In cases of malnutrition or stress, these requirements may be increased. It is acceptable in pediatrics to start with a nutritional solution of half strength at a rate of about 60 to 70 mL/kg/day. Within 24 to 48 hours the volume and concentration of the solution can be increased until the full strength pediatric solution (amino acids and dextrose) is given at a rate of 125 to 150 mL/kg/day.

Supplemental electrolytes and vitamin additives should be administered as deemed necessary by careful monitoring of blood chemistries and nutritional status. Addition of iron is more critical in the infant than the adult because of the increasing red cell mass required for the growing infant. Serum lipids should be monitored for evidence of essential fatty acid deficiency in patients maintained on fat-free TPN. Bicarbonate should not be administered during infusion of the nutritional solution unless deemed absolutely necessary.

To ensure the precise delivery of the small volumes of fluid necessary for total parenteral nutrition in infants, accurately calibrated and reliable infusion systems should be used. A basic solution for pediatric use should contain 25 grams of amino acids and 200 to 250 grams of glucose per 1000 mL, administered from containers containing 250 or 500 mL. Such a solution given at the rate of 145 mL/kg/day provides 130 kcal/kg/day.

Recommended Directions for Use of the Pharmacy Bulk Package

Use Aseptic Technique

1. During use, container must be stored, and all manipulations performed, in an appropriate laminar flow hood.
2. Remove cover from outlet port at bottom of container.
3. Insert piercing pin of sterile transfer set and suspend unit in a laminar flow hood. Insertion of a piercing pin into the outlet port should be performed only once in a Pharmacy Bulk Package solution. Once the outlet site has been entered, the withdrawal of container contents should be completed promptly in one continuous operation. Should this not be possible, a maximum time of 4 hours from transfer set pin or implement insertion is permitted to complete fluid transfer operations; i.e., discard container no later than 4 hours after initial closure puncture.
4. Sequentially dispense aliquots of Aminosyn II into I.V. containers using appropriate transfer set. During fluid transfer operations, the Pharmacy Bulk Package should be maintained under the storage conditions recommended in the labeling.

Additives may be incompatible with fluid withdrawn from this container. Consult with pharmacist, if available. When compounding admixtures, use aseptic technique. Mix thoroughly. Do

not store solutions containing additives. Because of the potential for life-threatening events, caution should be taken to ensure that precipitates have not formed in any parenteral nutrient mixture.

WARNING: Do not use flexible container in series connections.

HOW SUPPLIED

Aminosyn II is supplied as a Pharmacy Bulk Package in a 2000 mL flexible container for continuous admixture compounding procedures. Two concentrations are available:

Aminosyn II 10%, Sulfite-Free

NDC 0409-7172-17

Aminosyn II 15%, Sulfite-Free

NDC 0409-7171-17

Store at 20 to 25°C (68 to 77°F). [See USP Controlled Room Temperature.] Protect from freezing.
Avoid exposure to light.

Revised: November, 2010

Printed in USA
Hospira, Inc., Lake Forest, IL 60045 USA

EN-2701

