

# PACLITAXEL

## ANZATAX

6 mg/mL Solution for IV Infusion



### 1.0 PHARMACOLOGIC CATEGORY

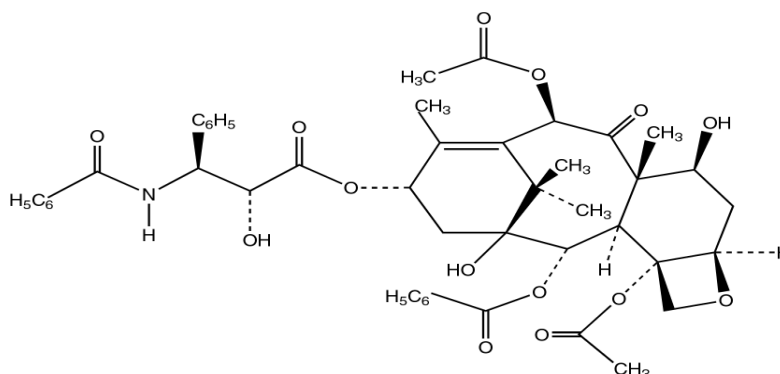
Antineoplastic agent

### 2.0 DESCRIPTION

Paclitaxel (Anzatax) is an anticancer agent from the taxane class of drugs. Paclitaxel (Anzatax) is a white powder. Paclitaxel (Anzatax) is extremely hydrophobic, and is therefore formulated in PEG-35 castor oil and ethanol.

Paclitaxel (Anzatax) has a pH of 6 to 7. It is a clear to pale yellow solution, free of visible particles.

Paclitaxel (Anzatax) is described chemically as (2S,5R,7S,10R,13S)-10,20-bis(acetoxy)-2-benzoyloxy-1,7-dihydroxy-9-oxo-5,20-epoxytax-11-en-13-yl (3S)-3-benzoylamino-3-phenyl-D-lactate. The chemical structure of Paclitaxel is shown below:



### Molecular weight

853.9

### CAS number

33069-62-4

### Excipients with known effect

Ethanol

### 3.0 FORMULATION/ COMPOSITION

Each 5 mL vial contains sterile solution of 30 mg Paclitaxel. Contains no antimicrobial preservative.

Each 16.7 mL vial contains sterile solution of 100 mg Paclitaxel. Contains no antimicrobial preservative.

Each 25 mL vial contains sterile solution of 150 mg Paclitaxel. Contains no antimicrobial preservative.

## **4.0 CLINICAL PARTICULARS**

### **4.1 Therapeutic Indications**

Paclitaxel (Anzatax) is indicated for the primary treatment of ovarian cancer in combination with a platinum agent.

Paclitaxel (Anzatax) is indicated for the treatment of metastatic ovarian cancer and metastatic breast cancer, after failure of standard therapy.

Paclitaxel (Anzatax) is indicated for the treatment of non-small cell lung cancer (NSCLC).

Paclitaxel (Anzatax) is indicated for adjuvant treatment of node positive breast cancer administered sequentially to doxorubicin and cyclophosphamide.

Paclitaxel (Anzatax) is indicated for the treatment of metastatic cancer of the breast, in combination with trastuzumab (Herceptin), in patients who have tumors that over-express HER-2 and who have not received previous chemotherapy for their metastatic disease.

### **4.2 Dosage and Method of Administration**

#### **Dosage**

All patients should be premedicated before paclitaxel (Anzatax) is administered to prevent severe hypersensitivity reactions (see Section **4.4 Special Warnings and Precautions for Use**). Before every treatment cycle, patients should be premedicated with:

- dexamethasone 20 mg orally 12 hours and 6 hours prior to starting the paclitaxel (Anzatax) infusion.
- promethazine 25 mg to 50 mg intravenously or other suitable H<sub>1</sub>-antagonist, 30 minutes prior to starting the paclitaxel (Anzatax) infusion.
- cimetidine 300 mg or ranitidine 50 mg by intravenous infusion over 15 minutes, starting 30 minutes prior to the paclitaxel (Anzatax) infusion.

For primary treatment of ovarian cancer, it is recommended that paclitaxel (Anzatax) be used at a dose of:

- 175 mg/m<sup>2</sup>, administered intravenously over 3 hours, followed by cisplatin 75 mg/m<sup>2</sup>. The infusion should be repeated every three weeks.
- 135 mg/m<sup>2</sup>, administered intravenously over 24 hours, followed by cisplatin 75 mg/m<sup>2</sup>. The infusion should be repeated every three weeks.

For the treatment of metastatic ovarian cancer or metastatic breast cancer, it is recommended that paclitaxel (Anzatax) be used as a single agent at a dose of 175 mg/m<sup>2</sup>. Paclitaxel (Anzatax) should be administered as an intravenous infusion over 3 hours. The infusion should be repeated every 3 weeks as tolerated. Patients have tolerated treatment with up to 9 cycles of paclitaxel (Anzatax) therapy, but the optimal course of therapy remains to be established.

For primary or secondary treatment of NSCLC, the recommended dose of paclitaxel (Anzatax) is 175 mg/m<sup>2</sup> administered intravenously over 3 hours with a 3 week interval between courses.

For node positive breast cancer, the recommended dose of paclitaxel (Anzatax) is 175 mg/m<sup>2</sup> administered intravenously over 3 hours every 3 weeks for four courses following doxorubicin and cyclophosphamide combination therapy.

For over-expression of HER-2 breast cancer, paclitaxel (Anzatax) 175 mg/m<sup>2</sup> administered intravenously over 3 hours with a 3 week interval between courses for six cycles. Herceptin 2 mg/kg administered intravenously once a week until progression of disease after an initial loading dose of 4 mg/kg body weight. Paclitaxel infusion may be started the day following the first dose of trastuzumab or immediately after the subsequent doses of trastuzumab if the preceding dose of trastuzumab was well tolerated.

## **Method of Administration**

### Dilution

Paclitaxel (Anzatax) MUST BE DILUTED PRIOR TO INTRAVENOUS INFUSION. It should be diluted in 5% glucose or 0.9% sodium chloride intravenous infusion.

Dilution should be made to a final concentration of 0.3 to 1.2 mg/mL.

After the final dilution of Paclitaxel (Anzatax), the bottle should be swirled gently to disperse the paclitaxel (Anzatax). DO NOT SHAKE.

Avoid contact of paclitaxel (Anzatax) solutions with plasticized polyvinyl chloride (PVC) equipment, infusion lines or devices used when preparing infusion solutions. Prepare and store diluted paclitaxel (Anzatax) solutions in glass bottles or non-PVC infusion bags. These precautions are to avoid leaching of the plasticizer DEHP (di-[2-ethylhexyl] phthalate) from PVC infusion bags or sets. Paclitaxel (Anzatax) solutions should be administered through polyethylene lined administration sets (e.g., Gemini 20 giving set), using an IMED® pump.

Although solutions of paclitaxel (Anzatax) for infusion prepared as outlined above are chemically stable for 3 days at room temperature (25°C) and 14 days at 2°C to 8°C, it is recommended that the solution for infusion should be administered immediately after preparation as it does not contain an antimicrobial agent. The infusion should be completed within 24 hours of preparation of the solution and any residue discarded, according to the

guidelines for the disposal of cytotoxic drugs (see Section **6.4 Special Precautions for Handling and Disposal**). Use in one patient on one occasion only.

**Table 1:**

| Diluent                                       | Stored Below 25°C    |              | Stored at 2°C to 8°C<br>(Refrigerate. Do not freeze) |              |
|---|----------------------|--------------|--|--------------|
|   | Non-PVC Infusion Bag | Glass Bottle | Non-PVC Infusion Bag                                 | Glass Bottle |
| 0.9% Sodium Chloride for Intravenous Infusion | 7 days               | 3 days       | 28 days  | 14 days      |
| 5% Glucose for Intravenous Infusion           | 7 days               | 3 days       | 14 days  | 14 days      |

Solutions prepared this way have been shown to be chemically stable for these periods. Administration should be completed within 24 hours of the start of the infusion and any residue discarded according to the guidelines for the disposal of cytotoxic drugs. Do not use paclitaxel (Anzatax) if any precipitation forms or if the diluted solution appears cloudy.

#### Filtration

A microporous membrane of 0.22 microns or less in size is recommended as the in-line filter for all infusions of paclitaxel (Anzatax). The IMED® 0.2 micron add on filter set composed of polysulfone and the IVEX™ II 0.2-micron filter composed of cellulose have both been found to be suitable for paclitaxel (Anzatax).

Paclitaxel (Anzatax) is a cytotoxic anticancer drug and as with other potentially toxic compounds, caution should be exercised in handling paclitaxel (Anzatax). The use of gloves is recommended. Following topical exposure, tingling, burning, redness have been observed. If paclitaxel (Anzatax) solution contacts the skin, wash the skin immediately and thoroughly with soap and water. If paclitaxel (Anzatax) contacts mucous membranes, the membranes should be flushed thoroughly with water. Upon inhalation, dyspnea, chest pain, burning eyes, sore throat and nausea have been reported. Given the possibility of extravasation, it is advisable to closely monitor the infusion site for possible infiltration during drug administration.

The published guidelines related to procedures for the proper handling and disposal of cytotoxic drugs should be followed.

Care must be taken whenever handling cytostatic products. Always take steps to prevent exposure. This included appropriate equipment, such as wearing gloves and washing hands with soap and water after handling such products.

#### **Dosage Adjustment**

Subsequent doses of paclitaxel should be administered according to individual patient tolerance. Repetition of a course of paclitaxel (Anzatax) is not recommended until the patient's neutrophil count is at least  $1.5 \times 10^9$  cells/L (1,500 cells/mm<sup>3</sup>) and the platelet count is at least  $100 \times 10^9$  cells/L (100,000 cells/mm<sup>3</sup>). If there is severe neutropenia (neutrophil count less than

0.5 x 10<sup>9</sup> cells/L for a minimum of 7 days) or severe peripheral neuropathy or severe mucositis during paclitaxel (Anzatax) therapy, the dose of paclitaxel (Anzatax) in subsequent courses should be reduced by 20% (see Section **4.4 Special Warnings and Precautions for Use**). The incidence of neurotoxicity and the severity of neutropenia increase with dose within a regime.

### **Hepatic Impairment**

Inadequate data are available to recommend dosage alterations in patients with mild, moderate and severe hepatic impairments (see Section **4.4 Special Warnings and Precautions for Use**).

### **Pediatric Population**

Paclitaxel (Anzatax) is not recommended for use in children below 18 years due to lack of data on safety and efficacy.

### **4.3 Contraindications**

Paclitaxel (Anzatax) must not be used in patients who have exhibited hypersensitivity reactions to paclitaxel (Anzatax) or other taxanes.

Paclitaxel (Anzatax) must not be used in patients who have a history of hypersensitivity reactions to PEG 35 castor oil or drugs formulated in PEG 35 castor oil (e.g., cyclosporin for injection concentrate and teniposide for injection concentrate) or any of the other excipients.

Paclitaxel (Anzatax) should not be administered in patients who have a baseline neutrophil counts of <1.5 x 10<sup>9</sup> cells/L.

### **4.4 Special Warnings and Precautions for Use**

#### **General**

Paclitaxel (Anzatax) should be administered under the supervision of a physician experienced in the use of chemotherapeutic agents. Appropriate management of complications is possible only when adequate diagnostic and treatment facilities are readily available.

Paclitaxel (Anzatax) should be given before a platinum compound when it is given in combination with a platinum compound.

#### **Premedication**

In order to minimize the possibility of hypersensitivity reactions due to histamine release, patients should be premedicated before every treatment cycle of paclitaxel (Anzatax). Premedication should include corticosteroids (e.g., dexamethasone), antihistamines (e.g. diphenhydramine or promethazine) and an H<sub>2</sub>-receptor antagonist (e.g., cimetidine or ranitidine) (see Section **4.2 Dosage and Method of Administration**). The characteristic symptoms of hypersensitivity reactions are dyspnea and hypotension both requiring treatment, angioedema and widespread urticaria. In clinical trials, 2% of patients treated with paclitaxel (Anzatax) experienced severe hypersensitivity. One of these reactions was fatal in a patient treated without premedication. Paclitaxel (Anzatax) must not be used in patients who have exhibited hypersensitivity reactions to paclitaxel (Anzatax).

## **Neutropenia (see Section 4.8 Adverse Drug Reactions)**

As the dose limiting toxicity of paclitaxel (Anzatax) is dose related bone marrow suppression (primarily neutropenia), paclitaxel (Anzatax) should not be administered to patients with a pre-treatment neutrophil count of less than  $1.5 \times 10^9$  cells/L (1,500 cells/mm<sup>3</sup>) or platelet count of less than  $100 \times 10^9$  cells/L. Blood counts should be frequently monitored during treatment with paclitaxel (Anzatax). Further cycles of paclitaxel (Anzatax) should not be administered until the patient's neutrophil count is greater than  $1.5 \times 10^9$  cells/L (1,500 cells/mm<sup>3</sup>) and the platelet count is greater than  $100 \times 10^9$  cells/L (100,000 cells/mm<sup>3</sup>).

If there is severe neutropenia during a course of paclitaxel (Anzatax) (i.e., neutrophil count less than  $0.5 \times 10^9$  cells/L [500 cells/mm<sup>3</sup>]), the dose of paclitaxel (Anzatax) in subsequent cycles should be reduced by 20%. Previous radiation therapy may induce more severe myelosuppression. There is little information available from such patients at doses above 135 mg/m<sup>2</sup>.

## **Cardiovascular Toxicity**

Hypotension, hypertension and bradycardia have been observed during paclitaxel (Anzatax) administration, but generally do not require treatment. Frequent monitoring of vital signs, particular during the first hours of paclitaxel (Anzatax) infusion is recommended. (see Section 4.8 Adverse Drug Reactions).

Electrocardiographic monitoring is recommended for patients with serious conduction abnormalities and should be commenced for patients who develop abnormal cardiovascular symptoms or signs during monitoring of vital signs.

Severe cardiac conduction abnormalities have been reported rarely during paclitaxel (Anzatax) therapy. If patients develop significant conduction abnormalities during paclitaxel (Anzatax) administration, appropriate therapy should be administered and continuous electrocardiographic monitoring should be commenced and performed during subsequent therapy with paclitaxel (Anzatax) (see Section 4.8 Adverse Drug Reactions). Severe cardiovascular events were observed more frequently in patients with NSCLC than breast or ovarian cancer.

When paclitaxel (Anzatax) is used in combination with trastuzumab or doxorubicin for treatment of metastatic breast cancer, monitoring of cardiac function is recommended. When patients are candidates for treatment with paclitaxel (Anzatax) in these combinations, they should undergo baseline cardiac assessment including history, physical examination, ECG, echocardiogram, and/or MUGA scan. Cardiac function should be further monitored during treatment (e.g, every 3 months). Monitoring may help to identify patients who develop cardiac dysfunction and treating physicians should carefully assess the cumulative dose (mg/m<sup>2</sup>) of anthracycline administered when making decisions regarding frequency of ventricular function assessment. When testing indicates deterioration in cardiac function, even asymptomatic, treating physicians should carefully assess the clinical benefits of further therapy against the potential for producing cardiac damage, including potentially irreversible damage. If further treatment is administered, monitoring of cardiac function should be more frequent (e.g, every 1- 2 cycles).

## **Anaphylaxis and Severe Hypersensitivity Reactions**

Severe hypersensitivity (anaphylactoid reactions characterized by dyspnea and hypotension requiring treatment, angioedema and generalized urticaria) have occurred rarely in premedicated patients receiving paclitaxel (Anzatax). Rare fatal reactions have occurred in patients despite pre-treatment. Cross-hypersensitivity between paclitaxel (Anzatax) and other taxane products has been reported and may include severe reactions such as anaphylaxis. Patients with a previous history of hypersensitivity to other taxanes should be closely monitored during initiation of paclitaxel (Anzatax) therapy.

Since significant hypersensitivity reactions may occur, appropriate supportive equipment should be available. Patients receiving paclitaxel (Anzatax) should be under continuous observation for at least the first 30 mins following the start of the infusion and frequently thereafter. In case of a severe hypersensitivity reaction, paclitaxel (Anzatax) infusion should be discontinued immediately and appropriate treatment given as indicated for anaphylaxis. The patient should not be rechallenged with the drug. Minor hypersensitivity reactions such as flushing, skin reactions etc. do not require interruption of therapy (see Section **4.8 Adverse Drug Reactions**).

## **Gastrointestinal**

In patients receiving paclitaxel (Anzatax) who complain of abdominal pain with other signs and symptoms, bowel perforation should be excluded.

## **Administration**

Paclitaxel (Anzatax) is administered by intravenous infusion only; it must not be administered by the intracerebral, intrapleural or intraperitoneal routes. Paclitaxel (Anzatax) must be diluted before intravenous infusion. Prior to intravenous infusion of paclitaxel (Anzatax), it must be ensured that the indwelling catheter is in the correct position as extravasation, necrosis and/or thrombophlebitis may result with incorrect administration (see Section **4.2 Dosage and Method of Administration**).

Patients receiving paclitaxel (Anzatax) should be under continuous observation for at least the first 30 minutes following the start of the infusion and frequently thereafter. In case of a severe hypersensitivity reaction, paclitaxel (Anzatax) infusion should be discontinued immediately and appropriate treatment given as indicated for anaphylaxis. The patient should not be rechallenged with the drug. Minor hypersensitivity reactions such as flushing, skin reactions, etc. do not require interruption of therapy (see Section **4.8 Adverse Drug Reactions**).

In some patients, temporary discontinuation of the infusion is sufficient to resolve the symptoms. Other patients may require therapy with bronchodilators, adrenaline, antihistamines and corticosteroids, either alone or in combination.

## **Injection Site Reaction**

A specific treatment for extravasation reaction is unknown at this time. Given the possibility of extravasation, it is advisable to closely monitor the infusion site for possible infiltration during drug administration.

## **Nervous System**

Patients with pre-existing neuropathy should be carefully monitored. Peripheral neuropathy is frequently reported in patients receiving paclitaxel (Anzatax) and the severity is dose dependent. A 20% reduction in paclitaxel (Anzatax) dose for all subsequent courses is recommended for patients who develop severe peripheral neuropathy during therapy (see Section **4.8 Adverse Drug Reactions**).

In NSCLC patients, the administration of paclitaxel (Anzatax) in combination with cisplatin resulted in a greater incidence of neurotoxicity than usually seen in patients receiving single agent paclitaxel (Anzatax).

Paclitaxel (Anzatax) contains ethanol, 396 mg/mL; consideration should be given to possible CNS and other effects of alcohol.

Children may be more sensitive than adults to the effects of ethanol.

## **Interstitial Pneumonia**

Paclitaxel (Anzatax) in combination with radiation of the lung, irrespective of their chronological order, may contribute to the development of interstitial pneumonia.

## **Pseudomembranous Colitis**

Pseudomembranous colitis has been reported in patients who have not been concomitantly treated with antibiotics. This reaction should be considered in the differential diagnosis of cases of severe or persistent diarrhea occurring during or shortly after treatment with paclitaxel (Anzatax).

## **Mucositis**

Severe mucositis has been reported which requires dose reduction (see Section **4.2 Dosage and Method of Administration**).

## **Ophthalmology**

There have been reports of reduced visual acuity due to cystoid macular edema (CMO) during treatment with paclitaxel (Anzatax) as well as with other taxanes (see Section **4.8 Adverse Drug Reactions**). Patients with visual impairment during paclitaxel (Anzatax) treatment should seek a prompt and complete ophthalmologic examination. Paclitaxel (Anzatax) should be discontinued if a CMO diagnosis is confirmed.

## **Use in Hepatic Impairment**

The effect of hepatic impairment on the pharmacokinetics of paclitaxel (Anzatax) has not been established. However, as the liver is thought to be the primary site for metabolism of the drug, paclitaxel (Anzatax) should be given cautiously to patients with decreased liver function. Paclitaxel (Anzatax) has been shown to cause a dose related elevation of liver enzymes.



Patients with hepatic impairment may be at increased risk of toxicity, particularly Grade 3-4 myelosuppression. There is no evidence that the toxicity of paclitaxel is increased when given as a 3-hour infusion to patients with mildly abnormal liver function. When paclitaxel is given as a greater than 3-hour infusion, increased myelosuppression may be seen in patients with moderate to severe hepatic impairment. Inadequate data are available to recommend dosage alterations in patients with mild to moderate hepatic impairments (see **Section 5.2 Pharmacokinetic properties**). Patients with severe hepatic impairment must not be treated with paclitaxel.

### **Use in Renal Impairment**

The effect of renal impairment on the pharmacokinetics of paclitaxel (Anzatax) has not been established.

### **Use in the Elderly**

Of 2228 patients who received paclitaxel (Anzatax) in eight clinical studies evaluating its safety and efficacy in the treatment of advanced ovarian cancer, breast carcinoma or NSCLC and 1570 patients who were randomized to receive paclitaxel (Anzatax) in the adjuvant breast cancer study, 649 patients (17%) were 65 years or older, including 49 patients (1%) 75 years or older. In most studies, severe myelosuppression was more frequent in elderly patients; in some studies, severe neuropathy was more common in elderly patients. In two clinical studies in NSCLC, the elderly patients treated with paclitaxel (Anzatax) had a higher incidence of cardiovascular events. Estimates of efficacy appeared similar in elderly patients and in younger patients; however, comparative efficacy cannot be determined with confidence due to the small number of elderly patients studied. In a study of first-line treatment of ovarian cancer, elderly patients had a lower median survival than younger patients, but no other efficacy parameters favoured the younger group.

### **Pediatric Use**

The safety and effectiveness of paclitaxel (Anzatax) in pediatric patients has not been established. There have been reports of central nervous system (CNS) toxicity (rarely associated with death) in a clinical trial in pediatric patients in which paclitaxel (Anzatax) was infused intravenously over 3 hours at doses ranging from 350 mg/m<sup>2</sup> to 420 mg/m<sup>2</sup>. The toxicity is most likely attributable to the high dose of the ethanol component of the paclitaxel (Anzatax) vehicle given over a short infusion time. The use of concomitant antihistamines may intensify this effect. Although a direct effect of the paclitaxel (Anzatax) itself cannot be discounted, the high doses used in this study (over twice the recommended adult dosage) must be considered in assessing the safety of paclitaxel (Anzatax) for use in this population.

### **Effects on Laboratory Tests**

No data available

## **4.5 Interaction with Other Medicinal Products and Other Forms of Interaction**

## **Cisplatin**

The recommended regimen of paclitaxel (Anzatax) administration for the first line chemotherapy of ovarian carcinoma is for paclitaxel (Anzatax) to be given before cisplatin. When paclitaxel (Anzatax) is given before cisplatin, the safety profile of paclitaxel (Anzatax) is consistent with that reported for single agent use. Administration of cisplatin prior to paclitaxel (Anzatax) treatment leads to greater myelosuppression than that seen when paclitaxel (Anzatax) is given prior to cisplatin. In patients receiving cisplatin prior to paclitaxel (Anzatax), there is about a 20% decrease in paclitaxel clearance. Patients treated with paclitaxel (Anzatax) and cisplatin may have an increased risk of renal failure as compared to cisplatin alone in gynecological cancers.

## **Doxorubicin**

Sequence effects characterized by more profound neutropenic and stomatitis episodes have been observed with combination use of paclitaxel (Anzatax) and doxorubicin when paclitaxel (Anzatax) was administered before doxorubicin and using longer than recommended infusion times (paclitaxel (Anzatax) administered over 24 hours; doxorubicin over 48 hours). Plasma levels of doxorubicin (and its active metabolite doxorubicinol) may be increased when paclitaxel (Anzatax) and doxorubicin are used in combination and are given closer in time. Paclitaxel (Anzatax) for initial treatment of metastatic breast cancer should be administered 24 hours after doxorubicin (see Section **4.2 Dosage and Method of Administration**). However, data from a trial using bolus doxorubicin and 3-hour paclitaxel (Anzatax) infusion found no sequence effects on the pattern of toxicity.

## **Cimetidine**

Paclitaxel clearance is not affected by cimetidine premedication.

## **Drugs Metabolized in the Liver**

The metabolism of paclitaxel (Anzatax) is catalyzed, in part, by cytochrome P450 isoenzymes CYP2C8 and 3A4. Clinical studies have demonstrated that CYP2C8 mediated metabolism of paclitaxel (Anzatax), to 6 $\alpha$ -hydroxypaclitaxel, is the major metabolic pathway in humans. Concurrent administration of ketoconazole, a known potent inhibitor of CYP3A4, does not inhibit the elimination of paclitaxel (Anzatax) in patients; thus, both medicinal products may be administered together without dosage adjustment. Further data on the potential of drug interactions between paclitaxel (Anzatax) and CYP2C8 and 3A4 substrates/inhibitors are limited. Therefore, caution should be exercised when administering paclitaxel (Anzatax) concomitantly with medicines known to inhibit (e.g., erythromycin, fluoxetine, gemfibrozil, deferasirox, trimethoprim) or induce (e.g., rifampicin, carbamazepine, phenytoin, phenobarbital, efavirenz, nevirapine, St John's wort) either CYP2C8 or 3A4.

In the clinical trial of paclitaxel (Anzatax) in combination with trastuzumab (Herceptin), mean serum trough concentrations of trastuzumab were consistently elevated 1.5-fold as compared with serum concentrations of trastuzumab in combination with anthracycline plus cyclophosphamide (AC).

Arthralgia or myalgia adverse events of paclitaxel (Anzatax) appear to be of a higher incidence in patients being treated concurrently with filgrastim (granulocyte colony stimulating factor; G-CSF).

## **4.6 Fertility, Pregnancy and Lactation**

### **Effects on Fertility**

Following treatment with intravenous paclitaxel (Anzatax) at a dose of 1 mg/kg (6 mg/m<sup>2</sup>), rats showed decreased fertility and toxicity in unborn offspring. Paclitaxel (Anzatax) administered intravenously to rabbits during organogenesis at a dose of 3 mg/kg (33 mg/m<sup>2</sup>) was toxic to both mother and fetus.

### Infertility in Females and Males

Based on findings in animal studies, paclitaxel (Anzatax) may impair fertility in females and males of reproductive potential. Male patients should seek advice regarding cryoconservation of sperm prior to treatment with paclitaxel because of the possibility of infertility.

### **Use in Pregnancy – Category D**

Paclitaxel (Anzatax) is a cytotoxic agent that can produce spontaneous abortion, fetal loss and birth defects and may cause fetal harm when administered to a pregnant woman. Therefore, paclitaxel should not be used during pregnancy unless clearly necessary. Studies have shown paclitaxel (Anzatax) to be toxic to embryos and fetuses in rabbits at an intravenous dose of 3 mg/kg (33 mg/m<sup>2</sup>) given during organogenesis. Paclitaxel (Anzatax) is toxic to rat fetuses at a dose of 1 mg/kg (6 mg/m<sup>2</sup>) and produced low fertility and fetal toxicity in rats. Examination revealed that no gross external, soft tissue or skeletal alterations occurred. There are no studies in pregnant women.

Women of childbearing potential should have a pregnancy test prior to starting treatment with paclitaxel (Anzatax). These women should be strongly advised to use effective contraception throughout therapy and for at least six months after the last dose of paclitaxel (Anzatax). If paclitaxel (Anzatax) is used during pregnancy, or if the patient becomes pregnant while receiving this drug, the patient should be apprised of the potential hazard.

### Females and Males of Reproductive Potential

#### *Males*

Based on findings in genetic toxicity and animal reproduction studies, males should be advised to use effective contraception in order to avoid fathering a child during treatment and for at least three months after the last dose of paclitaxel (Anzatax).

#### *Females*

Women of childbearing potential should be advised to use effective contraception in order to avoid becoming pregnant during treatment and for at least six months after the last dose of paclitaxel (Anzatax).

## **Use in Lactation**

It is not known whether paclitaxel (Anzatax) is excreted in human milk. The evidence from many drugs would suggest that paclitaxel (Anzatax) could be excreted in breast milk, though this is not known. Because infants receiving the drug could experience serious adverse effects, breastfeeding should be discontinued while the mother is undergoing treatment.

## **4.7 Effects on Ability to Drive and Use Machines**

The effects of this medicine on a person's ability to drive and use machines were not assessed as part of its registration. Patients should refrain from driving or using machines until they know that paclitaxel (Anzatax) does not negatively affect these abilities. It should be noted that paclitaxel (Anzatax) contains ethanol.

## **4.8 Adverse Drug Reactions**

The following is based on the experience of 812 patients treated in Phase II and III clinical trials. The frequency and severity of adverse effects are generally similar between patients receiving paclitaxel (Anzatax) for the treatment of ovarian, breast or lung cancer. None of the observed effects were clearly influenced by age. Unless stated otherwise, percent figures, where given, are based on observed incidence when using the recommended dosing regimen. If other regimes are used, the incidence of reaction may be higher.

Safety of the paclitaxel/platinum combination has been investigated in a large randomized trial in ovarian cancer and in two Phase III trials in NSCLC. Unless otherwise mentioned, the combination of paclitaxel (Anzatax) with platinum agents did not result in any clinically relevant changes to the safety profile of single agent paclitaxel (Anzatax).

Adverse effects reported were those occurring during or following the first course of therapy, and have, where possible, been grouped by frequency according to the following criteria.

*Very common:*  $\geq 1/10$

*Common:*  $\geq 1/100$  and  $< 1/10$

*Uncommon:*  $\geq 1/1000$  and  $< 1/100$

*Rare:*  $\geq 1/10000$  and  $< 1/1000$

*Very rare:*  $< 1/10000$

### **Cardiovascular**

*Very common:* Hypotension.

*Common:* Bradycardia; ECG abnormalities (non-specific repolarization and sinus tachycardia).

*Uncommon:* ECG abnormalities (premature beats), cardiomyopathy.

*Rare:* Myocardial infarction; congestive heart failure (typically in patients who have received other chemotherapy, notably anthracyclines).

Six severe cardiovascular events possibly related to paclitaxel (Anzatax) administration occurred including asymptomatic ventricular tachycardia, tachycardia with bigeminy, atrioventricular block (2 patients), and syncopal episodes (2 patients - in one associated with severe hypotension and coronary stenosis resulting in death). Severe hypotensive reactions have been associated with serious hypersensitivity reactions and have required intervention. Cardiac failure and sinus bradycardia have also been observed.

## **Hematological**

*Very common:* Myelosuppression, thrombocytopenia, leukopenia, fever, bleeding, anemia; neutropenia (Overall, 52% of the patients experienced severe Grade IV neutropenia and 56% had Grade III/IV severe neutropenia on their first course. Neutrophil nadirs occurred at a median of 11 days after paclitaxel (Anzatax) administration).

*Common:* Febrile neutropenia (associated with an infectious episode, including UTI and URTI).

*Rare:* Five septic episodes, which were associated with severe neutropenia attributable to paclitaxel (Anzatax) administration had a fatal outcome.

Patients who have received prior radiation or cisplatin therapy exhibit more frequent myelosuppression, which is generally of greater severity (see Section 4.4 **Special Warnings and Precautions for Use** and Section 4.5 **Interaction with Other Medicinal Products and Other Forms of Interaction**).

## **Hepatobiliary**

*Very common:* Elevated alkaline phosphatase; elevated AST; elevated ALT.

*Common:* Elevated bilirubin.

*Rare:* Hepatic necrosis (leading to death); hepatic encephalopathy (leading to death).

## **Hypersensitivity**

*Very common:* Flushing; rash.

*Common:* Dyspnea; hypotension; chest pains; tachycardia.

*Uncommon:* Significant hypersensitivity reactions requiring therapy (e.g., Hypotension, angioneurotic edema, bronchospasm, respiratory distress, generalized urticaria, edema, back pains, pain in extremities, chills, diaphoresis).

## **Infections and Infestation**

*Very Common:* Infection

*Uncommon:* Septic shock

### **Gastrointestinal**

*Very common:* Nausea; vomiting; diarrhea; mucositis (These manifestations were usually mild to moderate at the recommended dose.)

*Rare:* Bowel perforation (There have been several cases of bowel perforation associated with patients receiving paclitaxel (Anzatax). Patients receiving paclitaxel (Anzatax) who complain of abdominal pain with other signs and symptoms, should have bowel perforation excluded.)

Neutropenic enterocolitis has been reported.

### **Vascular Disorders**

*Very common:* Hypotension

*Uncommon:* Hypertension, thrombosis, thrombophlebitis

### **Musculoskeletal**

*Very common:* Arthralgia; myalgia (The symptoms were usually transient occurring two to three days after paclitaxel (Anzatax) administration and resolving within a few days.)

### **Neurological**

*Very common:* Peripheral neuropathy (Peripheral neuropathy occurs and is dose dependent with 60% of patients experiencing Grade I toxicity, 10% Grade II and 2% Grade III at the recommended doses. Neuropathy was present in 87% of patients at higher doses. Severity of symptoms also increased with dose; 4% of patients experienced severe symptoms at the recommended dose versus 10% at higher doses. Neurologic symptoms may occur following the first course and symptoms may worsen with increasing exposure to paclitaxel (Anzatax). Peripheral neuropathy was the cause of paclitaxel (Anzatax) discontinuation in 2% of patients. Sensory symptoms have usually improved or resolved within several months of paclitaxel (Anzatax) discontinuation.)

*Rare:* Optic nerve and/or visual disturbances (scintillating scotomata) particularly in patients who have received higher doses than recommended; these effects generally have been reversible; motor neuropathy with resultant minor distal weakness and autonomic neuropathy resulting in paralytic ileus and orthostatic hypotension.

### **Skin and Appendages**

*Very common:* Alopecia.

*Rare:* Nail and skin changes (mild and transient); radiation-recall dermatitis; recall dermatitis.

*Local:* Phlebitis following intravenous administration has been reported. Extravasation leading to edema, pain, erythema and induration has been reported. On occasions, extravasation can lead to cellulitis. Skin discoloration may also occur.

## **General Disorders and Administration Site Conditions**

*Very common:* Mucosal inflammation.

*Common:* Injection site reactions (including localized edema, pain, erythema, induration, on occasion extravasation can result in cellulitis.

Injection site reactions, including reactions secondary to extravasation, were usually mild and consisted of erythema, tenderness, skin discoloration, or swelling at the injection site. These reactions have been observed more frequently with the 24-hour infusion than with the 3-hour infusion. Recurrence of skin reactions at a site of previous extravasation following administration of paclitaxel (Anzatax) at a different site, i.e., 'recall', has been reported rarely.

Rare reports of more severe events such as phlebitis, cellulitis, induration, skin exfoliation, necrosis and fibrosis have been received as part of the continuing surveillance of paclitaxel (Anzatax) safety. In some cases, the onset of the injection site reaction either occurred during a prolonged infusion or was delayed by a week to ten days.

A specific treatment for extravasation reactions is unknown at this time. Given the possibility of extravasation, it is advisable to closely monitor the infusion site for possible infiltration during drug administration.

Radiation pneumonitis has been reported in patients receiving concurrent radiotherapy.

## **Post Marketing Experience**

The following additional adverse reactions have been identified during post approval use of paclitaxel (Anzatax). Because the reactions are reported voluntarily from a population of uncertain size, it is not always possible to reliably estimate their frequency or establish a causal relationship to drug exposure.

### Infections and Infestations

Pneumonia, sepsis.

### Cardiac Disorders

Atrial fibrillations, supraventricular tachycardia, reduction of left ventricle ejection fraction, ventricular failure.

### Hematological Disorders

Acute myeloid leukemia, myelodysplastic syndrome.

### Immune System Disorders

Anaphylactic reactions (with fatal outcome), anaphylactic shock, cross-hypersensitivity between paclitaxel (Anzatax) and other taxanes has been reported.

## Metabolism and Nutritional Disorders

Anorexia, tumor lysis syndrome

## Psychiatric Disorders

Confusion state.

## Vascular Disorders

Shock.

## Respiratory, Thoracic and Mediastinal Disorders

Dyspnea, pleural effusion, respiratory failure, interstitial pneumonia, lung fibrosis, pulmonary embolism, cough.

## Gastrointestinal Disorders

Bowel obstruction, bowel perforation, ischemic colitis, pancreatitis, mesenteric thrombosis, pseudomembranous colitis, esophagitis, constipation, ascites.

## Neurological Disorders

Autonomic neuropathy (resulting in paralytic ileus and orthostatic hypotension), grand mal seizures, convulsions, encephalopathy, dizziness, headache, ataxia, paresthesia, hyperesthesia.

## Eye Disorders

Photopsia, visual floaters, cystoid macular edema, macular edema.

## Ear and Labyrinth Disorders

Hearing loss, tinnitus, vertigo, ototoxicity.

## Skin and Subcutaneous Tissue Disorders

Stevens-Johnson syndrome, epidermal necrolysis, erythema multiforme, exfoliative dermatitis, urticaria, onycholysis (patients on therapy should wear sun protection on hands and feet), pruritus, rash, erythema, phlebitis, cellulitis, skin exfoliation, necrosis fibrosis, palmar-plantar erythrodysesthesia syndrome.

## Musculoskeletal and Connective Tissue Disorders

Systemic lupus erythematosus, scleroderma

## Investigations

Increase in blood creatinine.



## General Disorders and Administration Site Conditions

Asthenia, malaise, pyrexia, dehydration, edema.

### **4.9 Overdose and Treatment**

At present there is no specific treatment for paclitaxel (Anzatax) overdose. In case of overdose, the patient should be closely monitored. Probable consequences of an overdose are mucositis, severe bone marrow suppression and peripheral neurotoxicity and treatment should be supportive.

Overdoses in pediatric patients may be associated with acute ethanol toxicity. Treatment is symptomatic and supportive.

## **5.0 PHARMACOLOGICAL PROPERTIES**

### **5.1 Pharmacodynamic Properties**

#### **Mechanism of Action**

Paclitaxel (Anzatax) is an antimicrotubule antineoplastic agent. It promotes microtubule assembly by enhancing the polymerization of tubulin, the protein subunit of spindle microtubules, even in the absence of the mediators normally required for microtubule assembly (e.g. guanosine triphosphate [GTP]), thereby inducing the formation of stable, nonfunctional microtubules. While the precise mechanism of action of the drug is not completely known, paclitaxel (Anzatax) disrupts the dynamic equilibrium within the microtubule system and blocks cells in the late G2 phase and M phase of the cell cycle, inhibiting cell replication and impairing function of nervous tissue.

#### **Clinical Trials**

No data available.

### **5.2 Pharmacokinetic Properties**

#### **Distribution**

After paclitaxel (Anzatax) is administered intravenously, its plasma concentration declines biphasically.

The first phase shows rapid decline representing distribution of paclitaxel (Anzatax) to the peripheral compartment and elimination. This initial phase is followed by a relatively slow elimination of paclitaxel (Anzatax) from the peripheral compartment.

Mean steady state volume of distribution following single dose infusion of 135 and 175 mg/m<sup>2</sup> has ranged from 198 to 688 L/m<sup>2</sup>, indicating extensive extravascular distribution and/or tissue binding.

The serum protein binding of paclitaxel (Anzatax) is 89% following a three-hour infusion of 175 mg/m<sup>2</sup> paclitaxel (Anzatax).

## **Metabolism**

The liver is thought to be the primary site of metabolism for paclitaxel (Anzatax).

## **Excretion**

In patients treated with doses of 135 and 175 mg/m<sup>2</sup> given as 3- and 24-hour infusions, mean terminal half-life has ranged from 3.0 to 52.7 hours and total body clearance has ranged from 11.6 to 24.0 L/hour/m<sup>2</sup>.

Following three-hour infusions of 175 mg/m<sup>2</sup>, mean terminal half-life was estimated to be 9.9 hours; mean total body clearance was 12.4 L/hour/m<sup>2</sup>.

The mean cumulative urinary recovery of unchanged paclitaxel (Anzatax) has been reported as 1.8 to 12.6% of the dose.

## **5.3 Preclinical Safety Data**

### **Genotoxicity**

*In vitro* studies (chromosome abnormalities in human lymphocytes) and *in vivo* (micronucleus test using mice) mammalian test systems have shown paclitaxel (Anzatax) to be mutagenic. When testing using the Ames test or the CHO/HGPRT gene mutation assay, paclitaxel (Anzatax) did not induce mutagenicity.

### **Carcinogenicity**

No studies have examined the carcinogenic potential of paclitaxel (Anzatax), however, drugs similar to paclitaxel (Anzatax) are carcinogens.

## **6.0 PHARMACEUTICAL PARTICULARS**

### **6.1 Shelf-Life**

Please see outer package for the expiry date.

### **6.2 Storage Conditions**

Store at temperatures not exceeding 25°C. Protect from light.

### **6.3 Availability**

Glass vial with blue flip-off seal in:

5 mL (30 mg/5 mL), 16.7 mL (100 mg/16.7 mL), and 25 mL (150 mg/25 mL); Box of 1's.

#### **6.4 Special Precautions for Disposal and Other Handling**

The published guidelines related to procedures for the proper handling and disposal of cytotoxic drugs should be followed.

Care must be taken whenever handling cytostatic products. Always take steps to prevent exposure. This included appropriate equipment, such as wearing gloves and washing hands with soap and water after handling such products.

#### **7.0 FDA REGISTRATION NUMBER**

6 mg/mL Solution for IV Infusion: DR-XY25441

#### **8.0 DATE OF FIRST AUTHORIZATION/RENEWAL OF THE AUTHORIZATION**

6 mg/mL Solution for IV Infusion: 22 Mar 2004 Keep out of reach of children.

**For suspected adverse drug reaction, report to the FDA: [www.fda.gov.ph](http://www.fda.gov.ph)**

**Seek medical attention immediately at the first sign of any adverse drug reaction.**

**CAUTION:** Foods, Drugs, Devices and Cosmetics Act prohibits dispensing without prescription.

#### **Manufactured by:**

Hospira Australia Pty. Ltd.  
1-5, 7-23 and 25-39 Lexia Place,  
Mulgrave VIC 3170 Australia

#### **Marketing Authorization Holder:**

Pfizer, Inc.  
19F-20F, 8 Rockwell Building, Hidalgo Drive,  
Rockwell Center, Poblacion, Makati City 1210  
Metro Manila, Philippines

Under Authority of Pfizer, Inc., New York, N.Y., U.S.A.

|   |
|---|
| Revision No.: 4.2<br>Revision Date: 17 February 2025<br>Reference: AUSPI pfpanzai10123 + FDA<br>Correction + Alignment with CPR<br>Reference Date: 17 January 2023 + 21<br>November 2024 + 17 February 2025 |
|---|